



# SZABO SCANDIC

Part of Europa Biosite

## Produktinformation



Forschungsprodukte & Biochemikalien



Zellkultur & Verbrauchsmaterial



Diagnostik & molekulare Diagnostik



Laborgeräte & Service

Weitere Information auf den folgenden Seiten!  
See the following pages for more information!



### Lieferung & Zahlungsart

siehe unsere [Liefer- und Versandbedingungen](#)

### Zuschläge

- Mindermengenzuschlag
- Trockeneiszuschlag
- Gefahrgutzuschlag
- Expressversand

### SZABO-SCANDIC HandelsgmbH

Quellenstraße 110, A-1100 Wien

T. +43(0)1 489 3961-0

F. +43(0)1 489 3961-7

[mail@szabo-scandic.com](mailto:mail@szabo-scandic.com)

[www.szabo-scandic.com](http://www.szabo-scandic.com)

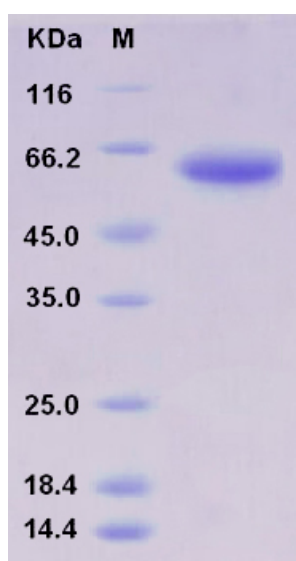
[linkedin.com/company/szaboscandic](https://www.linkedin.com/company/szaboscandic) 

## Recombinant Human CLEC10A / MGL1 / CD301 Protein (Fc tag)

### Protein Information

Alternative Name(s):	CLEC10A, CLECSF13, CLECSF14, HML
Catalog No :	PKSH031411
Species:	Human
Purity:	> 85 % as determined by SDS-PAGE
Expression Host :	Human Cells
Endotoxin Level	< 1.0 EU per ug of the protein as determined by the LAL method
Protein Description :	A DNA sequence encoding the human CLEC10A (Q8IUN9-2) (Gln61-His292) was expressed, with the fused Fc region of human IgG1 at the N-terminus.
Predicted N terminal :	Glu
Molecular Mass:	The recombinant human CLEC10A/Fc is a disulfide-linked homodimer. The reduced monomer comprises 492 amino acids and has a predicted molecular mass of 54.6 kDa. The apparent molecular mass of the protein is approximately 58 kDa in SDS-PAGE under reducing conditions due to glycosylation.
Formulation:	Lyophilized from sterile PBS, pH 7.4
Dissolution:	Please refer to the printed manual for detailed information.
Stability :	Samples are stable for up to twelve months from date of receipt at -70°C
Shipping	In general, recombinant proteins are provided as lyophilized powder which are shipped at ambient temperature. Bulk packages of recombinant proteins are provided as frozen liquid. They are shipped out with blue ice unless customers require otherwise.

### SDS-PAGE



## Background

CLEC10A, also known as the macrophage galactose-type calcium-type lectins (MGLs; CD301) constitute a unique class of C-type lectins because of their specificity for galactose and its structural homologues. MGLs/CD301 is a type II transmembrane glycoproteins and is expressed on macrophages and related cells of myeloid origins, particularly immature dendritic cells (DCs). There are 2 homologues: MGL1 and MGL2 (CD301a and CD301b) in mice. MGL1/CD301a induces both the production and secretion of interleukin (IL)-10. MGL1/CD301a plays a protective role against colitis by effectively inducing IL-10 production by colonic lamina propria macrophages in response to invading commensal bacteria.