



SZABO SCANDIC

Part of Europa Biosite

Produktinformation



Forschungsprodukte & Biochemikalien



Zellkultur & Verbrauchsmaterial



Diagnostik & molekulare Diagnostik



Laborgeräte & Service

Weitere Information auf den folgenden Seiten!
See the following pages for more information!



Lieferung & Zahlungsart

siehe unsere [Liefer- und Versandbedingungen](#)

Zuschläge

- Mindermengenzuschlag
- Trockeneiszuschlag
- Gefahrgutzuschlag
- Expressversand

SZABO-SCANDIC HandelsgmbH

Quellenstraße 110, A-1100 Wien

T. +43(0)1 489 3961-0

F. +43(0)1 489 3961-7

mail@szabo-scandic.com

www.szabo-scandic.com

[linkedin.com/company/szaboscandic](https://www.linkedin.com/company/szaboscandic) 

Recombinant Human LIF Protein (HEK293 Cells)

Catalog Number:PKSH031989



Note: Centrifuge before opening to ensure complete recovery of vial contents.

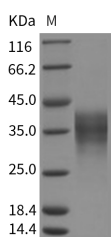
Description

Synonyms	Leukemia Inhibitory Factor;LIF;Differentiation-Stimulating Factor;D Factor;Melanoma-Derived LPL Inhibitor;MLPLI;Emfilermin;LIF;HILDA;CDF;DIA
Species	Human
Expression Host	HEK293 Cells
Sequence	Met 1-Phe202
Accession	P15018
Calculated Molecular Weight	19.7 kDa
Observed molecular weight	35.4 kDa
Tag	None
Bioactivity	Measured by its ability to inhibit the proliferation of M1 mouse myeloid leukemia cells. The ED50 for this effect is typically 0.2-0.8 ng/mL.

Properties

Purity	> 95 % as determined by reducing SDS-PAGE.
Endotoxin	< 1.0 EU per µg of the protein as determined by the LAL method.
Storage	Generally, lyophilized proteins are stable for up to 12 months when stored at -20 to -80°C. Reconstituted protein solution can be stored at 4-8°C for 2-7 days. Aliquots of reconstituted samples are stable at < -20°C for 3 months.
Shipping	This product is provided as lyophilized powder which is shipped with ice packs.
Formulation	Lyophilized from sterile PBS, pH 7.4. Normally 5 % - 8 % trehalose, mannitol and 0.01 % Tween80 are added as protectants before lyophilization. Please refer to the specific buffer information in the printed manual.
Reconstitution	Please refer to the printed manual for detailed information.

Data



> 95 % as determined by reducing SDS-PAGE.

Background

Leukemia inhibitory factor (LIF) is a pleiotropic glycoprotein belonging to the IL-6 family of cytokines. It's involved in growth promotion and cell differentiation of different types of target cells; influence on bone metabolism; cachexia; neural development; embryogenesis and inflammation. LIF has potent proinflammatory property; being the inducer of the acute phase protein synthesis and affecting the cell recruitment into the area of damage or inflammation. LIF is also one

For Research Use Only

A Reliable Research Partner in Life Science and Medicine

Toll-free: 1-888-852-8623

Web: www.elabscience.com

Tel: 1-832-243-6086

Email: techsupport@elabscience.com

Fax: 1-832-243-6017

Recombinant Human LIF Protein (HEK293 Cells)

Catalog Number:PKSH031989



of the cytokines that are capable to regulate the differentiation of embryonic stem cells; hematopoietic and neuronal cells. LIF binds to the specific LIF receptor (LIFR- α) which forms a heterodimer with a specific subunit common to all members of that family of receptors; the GP130 signal transducing subunit. This leads to activation of the JAK/STAT and MAPK cascades. Due to its polyfunctional activities; LIF is involved in the pathogenic events and development of many diseases of various origin.

For Research Use Only

A Reliable Research Partner in Life Science and Medicine

Toll-free: 1-888-852-8623

Tel: 1-832-243-6086

Fax: 1-832-243-6017

Web: www.elabscience.com

Email: techsupport@elabscience.com