



# SZABO SCANDIC

Part of Europa Biosite

## Produktinformation



Forschungsprodukte & Biochemikalien



Zellkultur & Verbrauchsmaterial



Diagnostik & molekulare Diagnostik



Laborgeräte & Service

Weitere Information auf den folgenden Seiten!  
See the following pages for more information!



### Lieferung & Zahlungsart

siehe unsere [Liefer- und Versandbedingungen](#)

### Zuschläge

- Mindermengenzuschlag
- Trockeneiszuschlag
- Gefahrgutzuschlag
- Expressversand

### SZABO-SCANDIC HandelsgmbH

Quellenstraße 110, A-1100 Wien

T. +43(0)1 489 3961-0

F. +43(0)1 489 3961-7

[mail@szabo-scandic.com](mailto:mail@szabo-scandic.com)

[www.szabo-scandic.com](http://www.szabo-scandic.com)

[linkedin.com/company/szaboscandic](https://www.linkedin.com/company/szaboscandic) 

## Recombinant Human Sialic acid-binding Ig-like lectin 15/Siglec-15/CD33L3 (C-mFc)

Catalog No. PKSH033849

### Description

<b>Synonyms</b>	Angiopoietin-related protein 4; 425O18-1; Angiopoietin-like protein 4; Fasting-induced adipose factor; Hepatic fibrinogen/angiopoietin-related protein; HFARP; Secreted protein Bk89; Angptl4; Farp; Fiaf; Ng27
<b>Species</b>	Human
<b>Expression_host</b>	Human Cells
<b>Sequence</b>	Phe19-Thr263
<b>Accession</b>	Q6ZMC9
<b>Mol_Mass</b>	52.1 kDa
<b>AP_Mol_Mass</b>	50-70 kDa
<b>Tag</b>	C-mFc
<b>Bio_activity</b>	Immobilized Human Siglec-15-mFc (Cat#PKSH033849) at 2µg/ml (100 µl/well) can bind Anti-Human Siglec15 mAb. The ED50 of Anti-Human Siglec15 mAb is 23.2 ng/ml.

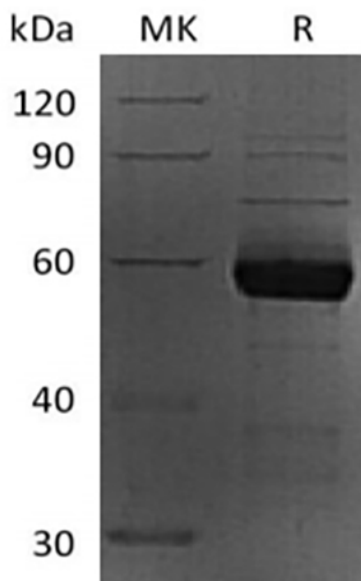
### Properties

<b>Purity</b>	>90% as determined by reducing SDS-PAGE.
<b>Endotoxin</b>	< 1 IEU/µg as determined by LAL test.
<b>Storage</b>	Lyophilized proteins are stable for up to 12 months when stored at -20 to -80°C. Reconstituted protein solution can be stored at 4-8°C for 2-7 days. Aliquots of reconstituted samples are stable at < -20°C for 3 months.
<b>Shipping</b>	This product is provided as lyophilized powder which is shipped with ice packs.
<b>Formulation</b>	Lyophilized from a 0.2 µm filtered solution of PBS, 150mM NaCl, 0.3% Chaps, 5% Trehalose, pH 7.4.
<b>Reconstitution</b>	Please refer to the printed manual for detailed information.

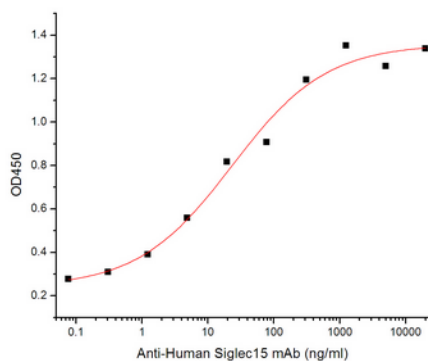
### Background

Human Siglec-15 is a transmembrane glycoprotein in the Siglec family. Siglecs are type I transmembrane proteins where the NH<sub>3</sub><sup>+</sup>-terminus is in the extracellular space and the COO<sup>-</sup>-terminus is cytosolic. Each Siglec contains an N-terminal V-type immunoglobulin domain (Ig domain) which acts as the binding receptor for sialic acid. These lectins are placed into the group of I-type lectins because the lectin domain is an immunoglobulin fold. All Siglecs are extended from the cell surface by C2-type Ig domains which have no binding activity. Siglecs differ in the number of these C2-type domains. Human Siglec-15 consists of a 244 amino acid (aa) extracellular domain (ECD) with two Ig-like domains, a 21 aa transmembrane segment, and a 44 aa cytoplasmic domain. Siglec-15 function is important for osteoclast formation and TRANCE/RANK Ligand signaling in osteoclasts

## SDS-PAGE



## Bioactivity



Immobilized Human Siglec-15-mFc (Cat#PKSH033849) at 2 $\mu$ g/ml (100  $\mu$ l/well) can bind Anti-Human Siglec15 mAb. The ED<sub>50</sub> of Anti-Human Siglec15 mAb is 23.2 ng/ml.