



# SZABO SCANDIC

Part of Europa Biosite

## Produktinformation



Forschungsprodukte & Biochemikalien



Zellkultur & Verbrauchsmaterial



Diagnostik & molekulare Diagnostik



Laborgeräte & Service

Weitere Information auf den folgenden Seiten!  
See the following pages for more information!



### Lieferung & Zahlungsart

siehe unsere [Liefer- und Versandbedingungen](#)

### Zuschläge

- Mindermengenzuschlag
- Trockeneiszuschlag
- Gefahrgutzuschlag
- Expressversand

### SZABO-SCANDIC HandelsgmbH

Quellenstraße 110, A-1100 Wien

T. +43(0)1 489 3961-0

F. +43(0)1 489 3961-7

[mail@szabo-scandic.com](mailto:mail@szabo-scandic.com)

[www.szabo-scandic.com](http://www.szabo-scandic.com)

[linkedin.com/company/szaboscandic](https://www.linkedin.com/company/szaboscandic) 

## Recombinant Human Siglec-10 (C-mFc)

Catalog No. PKSH033911

### Description

<b>Synonyms</b>	SIGLEC10; MGC126774; PRO940; Siglec10; SLG2; sialic acid-binding Ig-like lectin 10; Siglec-10;siglec-like gene 2; Siglec-like protein 2; SLG2sialic acid binding Ig-like lectin 10 Ig-like lectin 7
<b>Species</b>	Human
<b>Expression_host</b>	Human Cells
<b>Sequence</b>	Met17-Thr546
<b>Accession</b>	Q96LC7
<b>Mol_Mass</b>	84.6 kDa
<b>AP_Mol_Mass</b>	110-120 kDa
<b>Tag</b>	C-mFc
<b>Bio_activity</b>	Immobilized Anti-Human Siglec10 mAb at 2µg/ml (100 µl/well) can bind Human Siglec-10-mFc(Cat#PKSH033911 ). The ED50 of Human Siglec-10-mFc(Cat#PKSH033911 ) is 18.16 ng/ml.

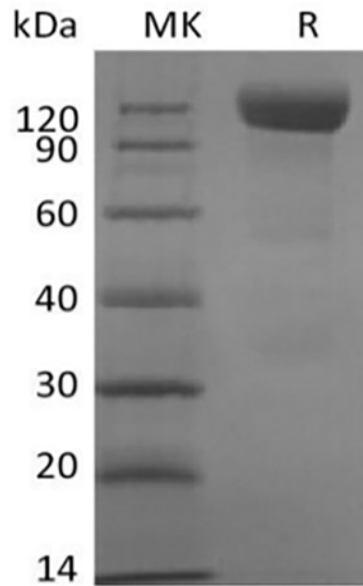
### Properties

<b>Purity</b>	>90% as determined by reducing SDS-PAGE.
<b>Endotoxin</b>	< 1.0 EU per µg as determined by the LAL method.
<b>Storage</b>	Lyophilized proteins are stable for up to 12 months when stored at -20 to -80°C. Reconstituted protein solution can be stored at 4-8°C for 2-7 days. Aliquots of reconstituted samples are stable at < -20°C for 3 months.
<b>Shipping</b>	This product is provided as lyophilized powder which is shipped with ice packs.
<b>Formulation</b>	Lyophilized from a 0.2 µm filtered solution of PBS, pH 7.4.
<b>Reconstitution</b>	Please refer to the printed manual for detailed information.

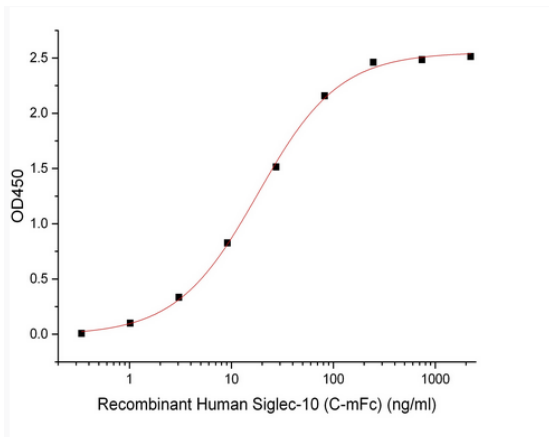
### Background

Siglecs (sialic acid binding Ig-like lectins) are I-type lectins that belong to the immunoglobulin superfamily. They are characterized by an N-terminal Ig-like V-type domain which mediates sialic acid binding, followed by a varying number of Ig-like C2-type domains. Siglecs 5-11 constitute the CD33/Siglec-3 related group, and are differentially expressed in the hematopoietic system. Siglec-G is the apparent ortholog of human Siglec-10. We describe here a novel member of the siglec protein family that shares a similar structure including five Ig-like domains, a transmembrane domain, and a cytoplasmic tail containing two ITIM-signaling motifs. Siglec-10 was identified through database mining of an asthmatic eosinophil EST library. Siglec-10 binds sialated proteins and lipids in alpha 2,3 or alpha 2,6 linkage and shows a preference for GT1b gangliosides. This binding can be modulated by cis interactions of Siglec-10 with sialated molecules expressed on the same cell. When tyrosine phosphorylated, the cytoplasmic ITIMs interact with phosphatases SHP-1 and SHP-2 to propagate inhibitory signals. The Siglec-10-VAP-1 interaction seems to mediate lymphocyte adhesion to endothelium and has the potential to modify the inflammatory microenvironment via the enzymatic end products.

## SDS-PAGE



## Bioactivity



Immobilized Anti-Human Siglec10 mAb at 2 $\mu$ g/ml (100  $\mu$ l/well) can bind Human Siglec-10-mFc(Cat#PKSH033911 ). The ED50 of Human Siglec-10-mFc(Cat#PKSH033911 ) is 18.16 ng/ml.