



SZABO SCANDIC

Part of Europa Biosite

Produktinformation



Forschungsprodukte & Biochemikalien



Zellkultur & Verbrauchsmaterial



Diagnostik & molekulare Diagnostik



Laborgeräte & Service

Weitere Information auf den folgenden Seiten!
See the following pages for more information!



Lieferung & Zahlungsart

siehe unsere [Liefer- und Versandbedingungen](#)

Zuschläge

- Mindermengenzuschlag
- Trockeneiszuschlag
- Gefahrgutzuschlag
- Expressversand

SZABO-SCANDIC HandelsgmbH

Quellenstraße 110, A-1100 Wien

T. +43(0)1 489 3961-0

F. +43(0)1 489 3961-7

mail@szabo-scandic.com

www.szabo-scandic.com

[linkedin.com/company/szaboscandic](https://www.linkedin.com/company/szaboscandic) 

Recombinant Swine IL-1 alpha protein(His Tag)

Catalog Number:PKSS000001



Note: Centrifuge before opening to ensure complete recovery of vial contents.

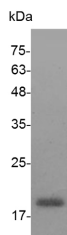
Description

Synonyms	IL1A
Species	Porcine
Expression Host	E.coli
Sequence	Ser113-Ser270
Accession	P18430
Calculated Molecular Weight	19.0 kDa
Observed molecular weight	17-25 kDa
Tag	C-His
Bioactivity	Measure by its ability to induce D10.G4.1 cells proliferation. The ED ₅₀ for this effect is 50 pg/mL.

Properties

Purity	> 98 % as determined by reducing SDS-PAGE.
Endotoxin	< 0.1 EU per µg of the protein as determined by the LAL method.
Storage	Generally, lyophilized proteins are stable for up to 12 months when stored at -20 to -80°C. Reconstituted protein solution can be stored at 4-8°C for 2-7 days. Aliquots of reconstituted samples are stable at < -20°C for 3 months.
Shipping	This product is provided as lyophilized powder which is shipped with ice packs.
Formulation	Lyophilized from sterile PBS, pH 7.4. Normally 5 % - 8 % trehalose, mannitol and 0.01% Tween80 are added as protectants before lyophilization. Please refer to the specific buffer information in the printed manual.
Reconstitution	Please refer to the printed manual for detailed information.

Data



> 98 % as determined by reducing SDS-PAGE.

Background

Interleukin-1 alpha (IL1 α) is a cytokine member of the interleukin-1 family. IL-1 consists of two distinct forms: IL1 α and IL1 β that recognize the same cell surface receptors but are distinct proteins with approximately 25% amino acid sequence identity. IL1 α is constitutively produced by epithelial cells and plays an essential role in maintenance of skin barrier function. Upon stimulation, a wide variety of cells including osteoblasts, monocytes, macrophages can be induced to express IL1 α . IL1 α possesses a wide range of metabolic, physiological, haematopoietic activities, and is critically involved in the regulation of the immune responses and inflammatory responses.

For Research Use Only

A Reliable Research Partner in Life Science and Medicine

Toll-free: 1-888-852-8623

Web: www.elabscience.com

Tel: 1-832-243-6086

Email: techsupport@elabscience.com

Fax: 1-832-243-6017