



SZABO SCANDIC

Part of Europa Biosite

Produktinformation



Forschungsprodukte & Biochemikalien



Zellkultur & Verbrauchsmaterial



Diagnostik & molekulare Diagnostik



Laborgeräte & Service

Weitere Information auf den folgenden Seiten!
See the following pages for more information!



Lieferung & Zahlungsart

siehe unsere [Liefer- und Versandbedingungen](#)

Zuschläge

- Mindermengenzuschlag
- Trockeneiszuschlag
- Gefahrgutzuschlag
- Expressversand

SZABO-SCANDIC HandelsgmbH

Quellenstraße 110, A-1100 Wien

T. +43(0)1 489 3961-0

F. +43(0)1 489 3961-7

mail@szabo-scandic.com

www.szabo-scandic.com

[linkedin.com/company/szaboscandic](https://www.linkedin.com/company/szaboscandic) 



UK Office

Everest Biotech Ltd

Cherwell Innovation Centre
77 Heyford Park
Upper Heyford
Oxfordshire
OX25 5HD
UK

Enquiries:

info@everestbiotech.com

Sales:

sales@everestbiotech.com

Tech support:

support@everestbiotech.com

Tel: +44 (0)1869 238326

Fax: +44 (0)1869 238327

US Office

Everest Biotech c/o Abcore

405 Maple Street, Suite A106
Ramona,
CA 92065
USA

Inquiries:

info@everestbiotech.com

Sales:

usasales@everestbiotech.com

Tech support:

support@everestbiotech.com

Tel: 888-320-4628 (toll-free)

Fax: 888-841-9041

www.everestbiotech.com

**Research Use Only. Not for
diagnostic or therapeutic use.**

EB05033 - Goat Anti-DDB1 Antibody

Size: 100µg specific antibody in 200µl



Target Protein

Principal Names: DDB1, damage-specific DNA binding protein 1, 127kDa, DDBA, XAP1, XPCE, XPE-BF, UV-DDB1, DDB p127 subunit, damage-specific DNA binding protein 1 (127kD), XPE

Official Symbol: DDB1

Accession Number(s): NP_001914.3

Human GeneID(s): [1642](#)

Non-Human GeneID(s): 64470 (rat)

Immunogen

Peptide with sequence C-DLIKVVEELTRIH, from the C Terminus of the protein sequence according to NP_001914.3.

Please note the [peptide](#) is available for sale.

Purification and Storage

Purified from goat serum by ammonium sulphate precipitation followed by antigen affinity chromatography using the immunizing peptide.

Supplied at 0.5 mg/ml in Tris saline, 0.02% sodium azide, pH7.3 with 0.5% bovine serum albumin.

Aliquot and store at -20°C. Minimize freezing and thawing.

Applications Tested

Peptide ELISA: antibody detection limit dilution 1:32000.

Western blot: Approx 140kDa band observed in lysates of cell line HeLa, HepG2 and Jurkat (calculated MW of 126.9kDa according to Human NP_001914.3). Recommended concentration: 1-2µg/ml. Approx 140kDa band observed in lysates of cell line NIH3T3 and approx 150kDa band observed in lysates of cell line NSO (calculated MW of 126.8kDa according to Mouse NP_056550.1). Recommended concentration: 0.01-0.03µg/ml. Primary incubation was 1 hour. Preliminary testing was unsuccessful on Rat Kidney for this particular batch.

IHC: Paraffin embedded Human Brain (Cortex). Recommended concentration: 4-6µg/ml.

Species Reactivity

Tested: Human, Mouse

Expected from sequence similarity: Human, Mouse, Rat, Dog, Cow

Specific Reference

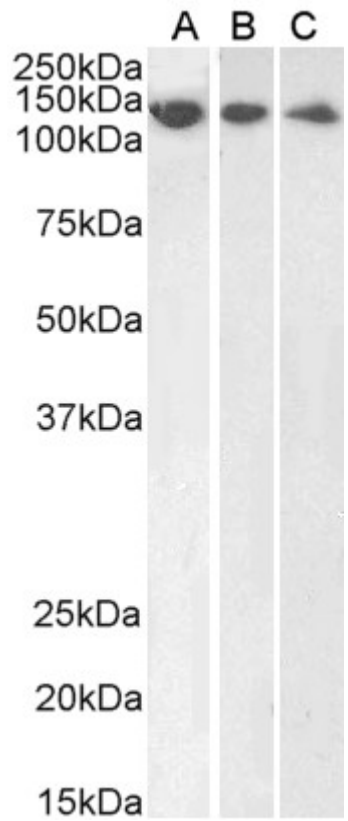
This antibody (previous batch) has been successfully used in WB and IP on Human:

Li T, Robert EI, van Breugel PC, Strubin M, Zheng N.

A promiscuous alpha-helical motif anchors viral hijackers and substrate receptors to the CUL4-DDB1 ubiquitin ligase machinery.

Nat Struct Mol Biol. 2010 Jan;17(1):105-11.

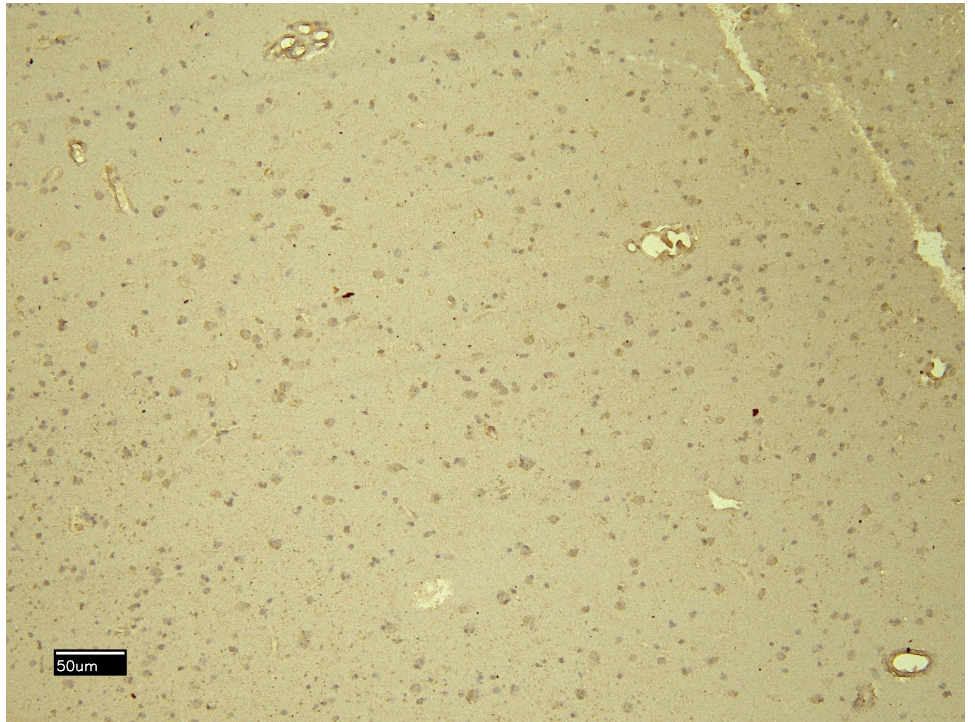
PMID: 19966799



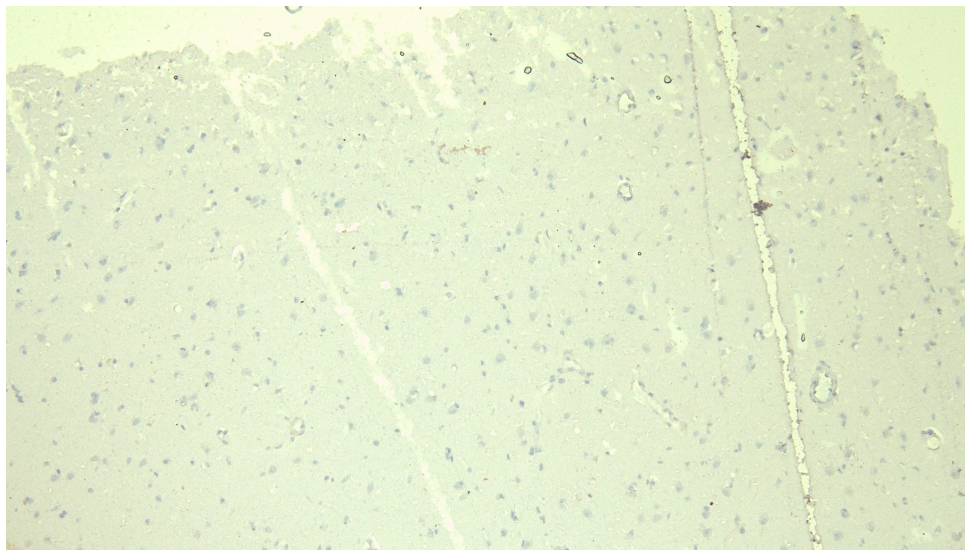
EB05033 (1 μ g/ml) staining of HeLa (A), HepG2 (B) and Jurkat (C) lysate (35 μ g protein in RIPA buffer). Detected by chemiluminescence.



EB05033 (0.01 μ g/ml) staining of NIH3T3 (A) and NSO (B) lysate. (35 μ g protein in RIPA buffer). Detected by chemiluminescence.



EB05033 (4µg/ml) staining of paraffin embedded Human Cortex. Heat induced antigen retrieval with citrate buffer pH 6, HRP-staining.



EB05033 Negative Control showing staining of paraffin embedded Human Cortex, with no primary antibody.