



# SZABO SCANDIC

Part of Europa Biosite

## Produktinformation



Forschungsprodukte & Biochemikalien



Zellkultur & Verbrauchsmaterial



Diagnostik & molekulare Diagnostik



Laborgeräte & Service

Weitere Information auf den folgenden Seiten!  
See the following pages for more information!



### Lieferung & Zahlungsart

siehe unsere [Liefer- und Versandbedingungen](#)

### Zuschläge

- Mindermengenzuschlag
- Trockeneiszuschlag
- Gefahrgutzuschlag
- Expressversand

### SZABO-SCANDIC HandelsgmbH

Quellenstraße 110, A-1100 Wien

T. +43(0)1 489 3961-0

F. +43(0)1 489 3961-7

[mail@szabo-scandic.com](mailto:mail@szabo-scandic.com)

[www.szabo-scandic.com](http://www.szabo-scandic.com)

[linkedin.com/company/szaboscandic](https://www.linkedin.com/company/szaboscandic) 



## EB05048 - Goat Anti-Tissue Factor Pathway Inhibitor Antibody

Size: 100µg specific antibody in 200µl



### UK Office

#### Everest Biotech Ltd

Cherwell Innovation Centre  
77 Heyford Park  
Upper Heyford  
Oxfordshire  
OX25 5HD  
UK

Enquiries:

[info@everestbiotech.com](mailto:info@everestbiotech.com)

Sales:

[sales@everestbiotech.com](mailto:sales@everestbiotech.com)

Tech support:

[support@everestbiotech.com](mailto:support@everestbiotech.com)

Tel: +44 (0)1869 238326

Fax: +44 (0)1869 238327

### US Office

#### Everest Biotech c/o Abcore

405 Maple Street, Suite A106  
Ramona,  
CA 92065  
USA

Inquiries:

[info@everestbiotech.com](mailto:info@everestbiotech.com)

Sales:

[usasales@everestbiotech.com](mailto:usasales@everestbiotech.com)

Tech support:

[support@everestbiotech.com](mailto:support@everestbiotech.com)

Tel: 888-320-4628 (toll-free)

Fax: 888-841-9041

[www.everestbiotech.com](http://www.everestbiotech.com)

**Research Use Only. Not for diagnostic or therapeutic use.**

### Target Protein

**Principal Names:** tissue factor pathway inhibitor (lipoprotein-associated coagulation inhibitor), TFPI, EPI, LACI, TFI, TFPI1, OTTHUMP00000163472, OTTHUMP00000205431, anti-convertin, extrinsic pathway inhibitor, lipoprotein-associated coagulation inhibitor, tissue factor pathway inhibitor

**Official Symbol:** TFPI

**Accession Number(s):** NP\_006278.1

**Human GeneID(s):** [7035](#)

**Important Comments:** This antibody is expected to recognize isoform a (NP\_006278.1) only.

### Immunogen

Peptide with sequence C-VKIAYEEIFVKNM, from the C Terminus of the protein sequence according to NP\_006278.1.

Please note the [peptide](#) is available for sale.

### Purification and Storage

Purified from goat serum by ammonium sulphate precipitation followed by antigen affinity chromatography using the immunizing peptide.

Supplied at 0.5 mg/ml in Tris saline, 0.02% sodium azide, pH7.3 with 0.5% bovine serum albumin.

Aliquot and store at -20°C. Minimize freezing and thawing.

### Applications Tested

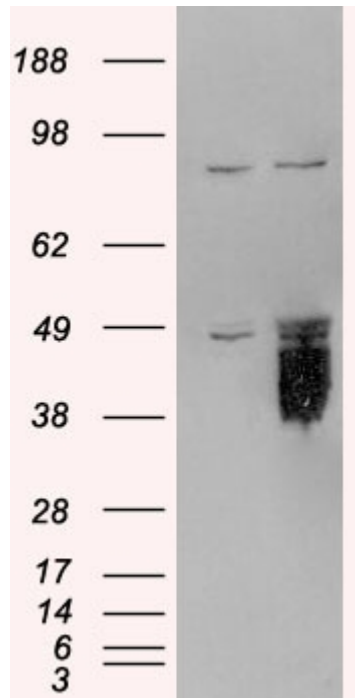
**Peptide ELISA:** antibody detection limit dilution 1:64000.

**Western blot:** Approx 50kDa band observed in lysates of cell lines HepG2 and HeLa (calculated MW of 35.0kDa according to NP\_006278.1). In transfected HEK293 transiently expressing TFPI bands of approx. 38kDa to 45kDa are observed. These bands are not observed in the non-transfected HEK293. Recommended concentration: 0.3-1µg/ml.

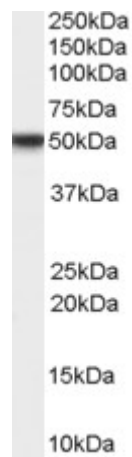
### Species Reactivity

**Tested:** Human

**Expected from sequence similarity:** Human



HEK293 overexpressing TFPI (RC219033) and probed with EB05048 (mock transfection in first lane), tested by Origene.



EB05048 staining (0.3µg/ml) of HeLa lysate (RIPA buffer, 35µg total protein cells per lane). Primary incubated for 1 hour. Detected by western blot using chemiluminescence.