



# SZABO SCANDIC

Part of Europa Biosite

## Produktinformation



Forschungsprodukte & Biochemikalien



Zellkultur & Verbrauchsmaterial



Diagnostik & molekulare Diagnostik



Laborgeräte & Service

Weitere Information auf den folgenden Seiten!  
See the following pages for more information!



### Lieferung & Zahlungsart

siehe unsere [Liefer- und Versandbedingungen](#)

### Zuschläge

- Mindermengenzuschlag
- Trockeneiszuschlag
- Gefahrgutzuschlag
- Expressversand

### SZABO-SCANDIC HandelsgmbH

Quellenstraße 110, A-1100 Wien

T. +43(0)1 489 3961-0

F. +43(0)1 489 3961-7

[mail@szabo-scandic.com](mailto:mail@szabo-scandic.com)

[www.szabo-scandic.com](http://www.szabo-scandic.com)

[linkedin.com/company/szaboscandic](https://www.linkedin.com/company/szaboscandic) 



## UK Office

### Everest Biotech Ltd

Cherwell Innovation Centre  
77 Heyford Park  
Upper Heyford  
Oxfordshire  
OX25 5HD  
UK

Enquiries:

[info@everestbiotech.com](mailto:info@everestbiotech.com)

Sales:

[sales@everestbiotech.com](mailto:sales@everestbiotech.com)

Tech support:

[support@everestbiotech.com](mailto:support@everestbiotech.com)

Tel: +44 (0)1869 238326

Fax: +44 (0)1869 238327

## US Office

### Everest Biotech c/o Abcore

405 Maple Street, Suite A106  
Ramona,  
CA 92065  
USA

Inquiries:

[info@everestbiotech.com](mailto:info@everestbiotech.com)

Sales:

[usasales@everestbiotech.com](mailto:usasales@everestbiotech.com)

Tech support:

[support@everestbiotech.com](mailto:support@everestbiotech.com)

Tel: 888-320-4628 (toll-free)

Fax: 888-841-9041

[www.everestbiotech.com](http://www.everestbiotech.com)

**Research Use Only. Not for  
diagnostic or therapeutic use.**

## EB05127 - Goat Anti-STAP2 / BKS Antibody

Size: 100µg specific antibody in 200µl



### Target Protein

**Principal Names:** STAP2, BKS, STAP-2, FLJ20234, breast tumor kinase substrate, brk kinase substrate, signal-transducing adaptor protein-2, signal transducing adaptor family member 2

**Official Symbol:** STAP2

**Accession Number(s):** NP\_060190.2; NP\_001013863.1

**Human GeneID(s):** [55620](#)

**Important Comments:** This antibody is expected to recognise isoforms 1 (NP\_060190.2) and isoform 2 (NP\_001013863.1).

### Immunogen

Peptide with sequence C-ELQKKLEKRRALEH, from the C Terminus of the protein sequence according to NP\_060190.2; NP\_001013863.1.

Please note the [peptide](#) is available for sale.

### Purification and Storage

Purified from goat serum by ammonium sulphate precipitation followed by antigen affinity chromatography using the immunizing peptide.

Supplied at 0.5 mg/ml in Tris saline, 0.02% sodium azide, pH7.3 with 0.5% bovine serum albumin.

Aliquot and store at -20°C. Minimize freezing and thawing.

### Applications Tested

**Peptide ELISA:** antibody detection limit dilution 1:128000.

**Western blot:** Approx 48kDa band observed in Human Heart lysates and 45kDa band observed in Human Breast Lysates (calculated MW of 49.6kDa according to NP\_060190 and of NP\_001013863.1). Recommended concentration: 0.5-1.5µg/ml.

### Species Reactivity

**Tested:** Human

**Expected from sequence similarity:** Human

### Specific References

**This antibody (previous batch) has been successfully used in Western blot on Human:**

Ikeda O, Mizushima A, Sekine Y, Yamamoto C, Muromoto R, Nanbo A, Oritani K, Yoshimura A, Matsuda T.

Involvement of STAP-2 in Brk-mediated phosphorylation and activation of STAT5 in breast cancer cells.

Cancer Sci. 2011 Apr;102(4):756-61.

PMID: 21205088

**This antibody (previous batch) has been successfully used in Western blot on Human:**

Ikeda O, Sekine Y, Mizushima A, Nakasuji M, Miyasaka Y, Yamamoto C, Muromoto R, Nanbo A, Oritani K, Yoshimura A, Matsuda T.

Interactions of STAP-2 with Brk and STAT3 participate in cell growth of human breast cancer cells.

J Biol Chem. 2010 Dec 3;285(49):38093-103.

PMID: 20929863

**This antibody (previous batch) has been successfully used in WB and IF on Human:**

Sekine Y, Ikeda O, Tsuji S, Yamamoto C, Muromoto R, Nanbo A, Oritani K, Yoshimura A, Matsuda T.

Signal-transducing adaptor protein-2 regulates stromal cell-derived factor-1 alpha-induced chemotaxis in T cells.

J Immunol. 2009 Dec 15;183(12):7966-74.

PMID: 19933863

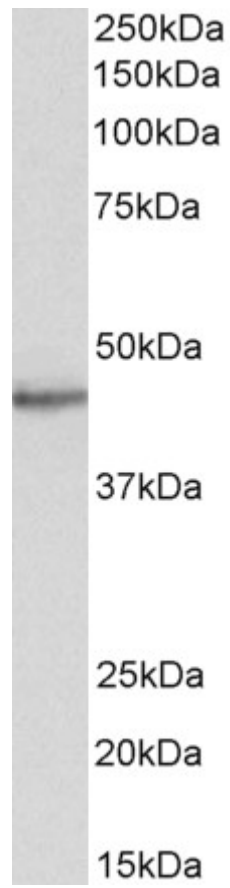
**This antibody (previous batch) has been successfully used in the following paper:**

Ikeda O, Miyasaka Y, Sekine Y, Mizushima A, Muromoto R, Nanbo A, Yoshimura A, Matsuda T.

STAP-2 is phosphorylated at tyrosine-250 by Brk and modulates Brk-mediated STAT3 activation.

Biochem Biophys Res Commun. 2009 Jun 19;384(1):71-5.

PMID: 19393627



EB05127 (0.5 $\mu$ g/ml) staining of Human Heart lysate (35 $\mu$ g protein in RIPA buffer). Primary incubation was 1 hour. Detected by chemiluminescence.