



# SZABO SCANDIC

Part of Europa Biosite

## Produktinformation



Forschungsprodukte & Biochemikalien



Zellkultur & Verbrauchsmaterial



Diagnostik & molekulare Diagnostik



Laborgeräte & Service

Weitere Information auf den folgenden Seiten!  
See the following pages for more information!



### Lieferung & Zahlungsart

siehe unsere [Liefer- und Versandbedingungen](#)

### Zuschläge

- Mindermengenzuschlag
- Trockeneiszuschlag
- Gefahrgutzuschlag
- Expressversand

### SZABO-SCANDIC HandelsgmbH

Quellenstraße 110, A-1100 Wien

T. +43(0)1 489 3961-0

F. +43(0)1 489 3961-7

[mail@szabo-scandic.com](mailto:mail@szabo-scandic.com)

[www.szabo-scandic.com](http://www.szabo-scandic.com)

[linkedin.com/company/szaboscandic](https://www.linkedin.com/company/szaboscandic) 



## EB05140 - Goat Anti-CD20 / MS4A1 (C Terminus) Antibody



Size: 100µg specific antibody in 200µl

### UK Office

#### Everest Biotech Ltd

Cherwell Innovation Centre  
77 Heyford Park  
Upper Heyford  
Oxfordshire  
OX25 5HD  
UK

Enquiries:

[info@everestbiotech.com](mailto:info@everestbiotech.com)

Sales:

[sales@everestbiotech.com](mailto:sales@everestbiotech.com)

Tech support:

[support@everestbiotech.com](mailto:support@everestbiotech.com)

Tel: +44 (0)1869 238326

Fax: +44 (0)1869 238327

### US Office

#### Everest Biotech c/o Abcore

405 Maple Street, Suite A106  
Ramona,  
CA 92065  
USA

Inquiries:

[info@everestbiotech.com](mailto:info@everestbiotech.com)

Sales:

[usasales@everestbiotech.com](mailto:usasales@everestbiotech.com)

Tech support:

[support@everestbiotech.com](mailto:support@everestbiotech.com)

Tel: 888-320-4628 (toll-free)

Fax: 888-841-9041

[www.everestbiotech.com](http://www.everestbiotech.com)

**Research Use Only. Not for diagnostic or therapeutic use.**

### Target Protein

**Principal Names:** MS4A1, membrane-spanning 4-domains, subfamily A, member 1, B1, S7, BP35, CD20, LEU-16, MGC3969, CD20 antigen, CD20 receptor, B-lymphocyte cell-surface antigen B1, CVID5, leukocyte surface antigen Leu-16, MS4A2

**Official Symbol:** MS4A1

**Accession Number(s):** NP\_068769.2; NP\_690605.1

**Human GeneID(s):** [931](#)

**Important Comments:** Please note that both reported variants (NP\_068769.2 and NP\_690605.1) encode the same protein.

### Immunogen

Peptide with sequence CQDQESSPIENDSSP, from the C Terminus of the protein sequence according to NP\_068769.2; NP\_690605.1.

Please note the [peptide](#) is available for sale.

### Purification and Storage

Purified from goat serum by ammonium sulphate precipitation followed by antigen affinity chromatography using the immunizing peptide.

Supplied at 0.5 mg/ml in Tris saline, 0.02% sodium azide, pH7.3 with 0.5% bovine serum albumin.

Aliquot and store at -20°C. Minimize freezing and thawing.

### Applications Tested

**Peptide ELISA:** antibody detection limit dilution 1:2000.

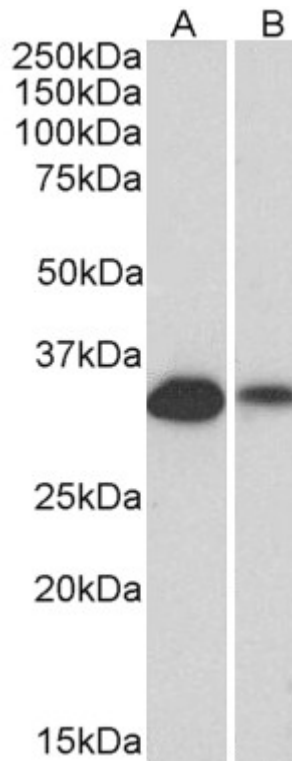
**Western blot:** Approx 35kDa band observed in lysates of Human Lymph Node and of cell line Daudi (calculated MW of 33.1kDa according to NP\_068769.2). Recommended concentration: 0.1-0.3µg/ml. Primary incubation was 1 hour.

**IHC:** Paraffin embedded Human Tonsil. Recommended concentration: 6-7µg/ml.

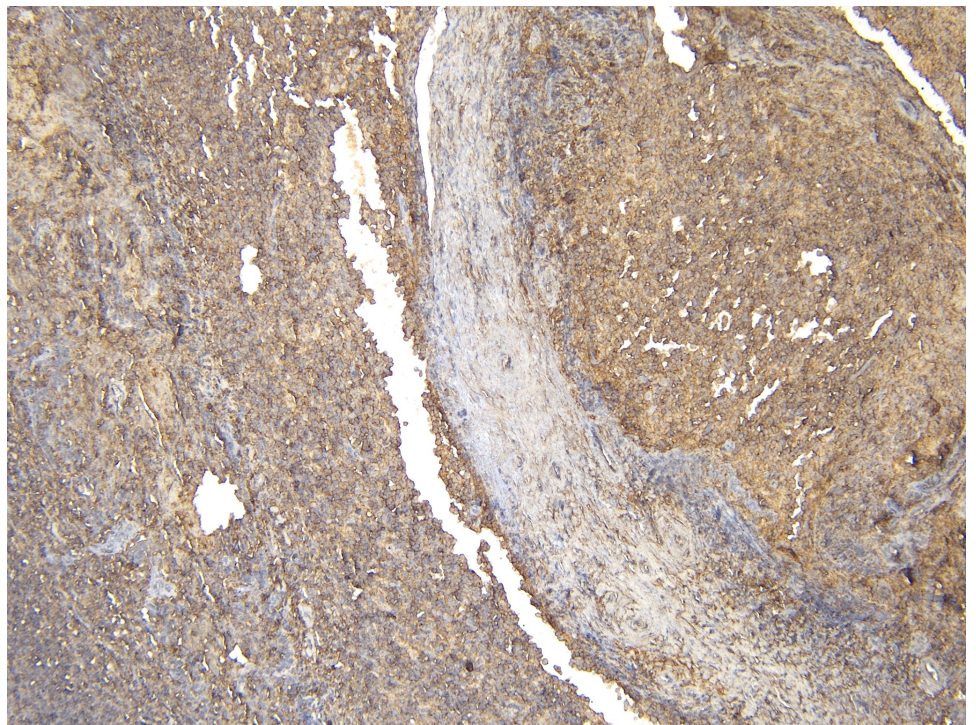
### Species Reactivity

**Tested:** Human

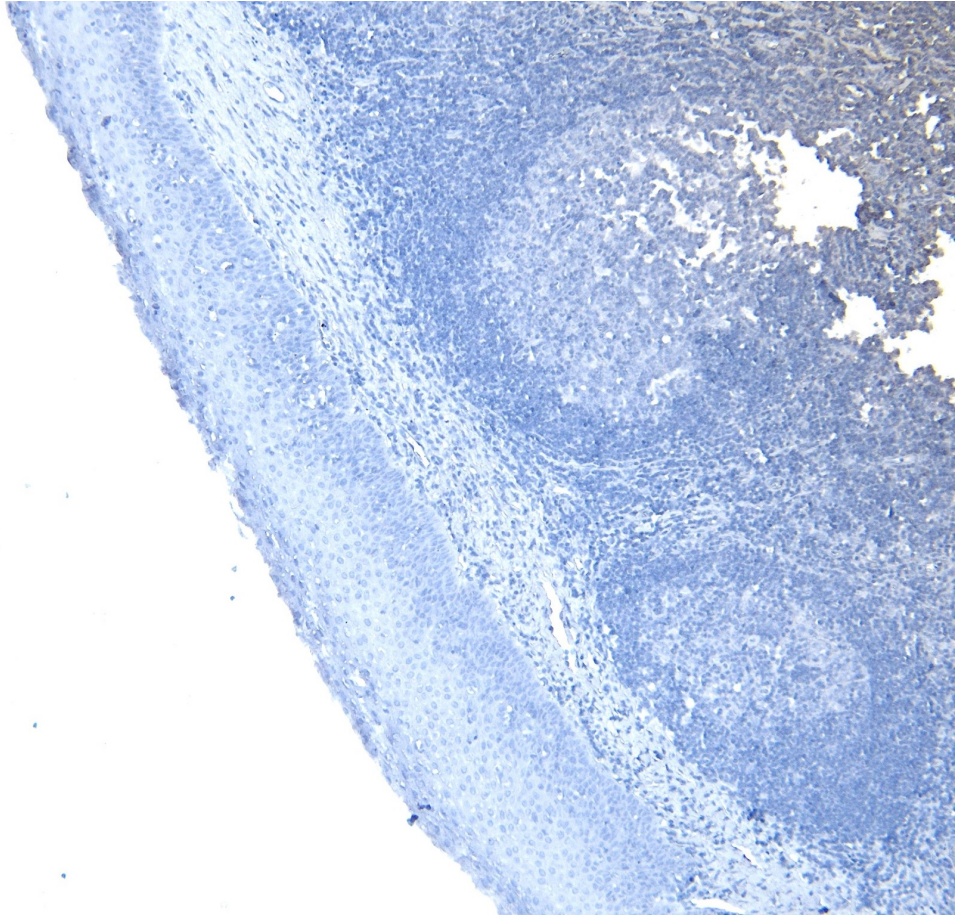
**Expected from sequence similarity:** Human



EB05140 (0.1 $\mu$ g/ml) staining of Lysate of Daudi (A) cell line and Human Lymph node (B) lysate (35 $\mu$ g protein in RIPA buffer). Detected by chemiluminescence.



EB05140 (6 $\mu$ g/ml) staining of paraffin embedded Human Tonsil. Heat induced antigen retrieval with citrate buffer pH 6, HRP-staining.



EB05140 Negative Control showing staining of paraffin embedded Human Tonsil, with no primary antibody.