



SZABO SCANDIC

Part of Europa Biosite

Produktinformation



Forschungsprodukte & Biochemikalien



Zellkultur & Verbrauchsmaterial



Diagnostik & molekulare Diagnostik



Laborgeräte & Service

Weitere Information auf den folgenden Seiten!
See the following pages for more information!



Lieferung & Zahlungsart

siehe unsere [Liefer- und Versandbedingungen](#)

Zuschläge

- Mindermengenzuschlag
- Trockeneiszuschlag
- Gefahrgutzuschlag
- Expressversand

SZABO-SCANDIC HandelsgmbH

Quellenstraße 110, A-1100 Wien

T. +43(0)1 489 3961-0

F. +43(0)1 489 3961-7

mail@szabo-scandic.com

www.szabo-scandic.com

[linkedin.com/company/szaboscandic](https://www.linkedin.com/company/szaboscandic) 



UK Office

Everest Biotech Ltd

Cherwell Innovation Centre
77 Heyford Park
Upper Heyford
Oxfordshire
OX25 5HD
UK

Enquiries:

info@everestbiotech.com

Sales:

sales@everestbiotech.com

Tech support:

support@everestbiotech.com

Tel: +44 (0)1869 238326

Fax: +44 (0)1869 238327

US Office

Everest Biotech c/o Abcore

405 Maple Street, Suite A106
Ramona,
CA 92065
USA

Inquiries:

info@everestbiotech.com

Sales:

usasales@everestbiotech.com

Tech support:

support@everestbiotech.com

Tel: 888-320-4628 (toll-free)

Fax: 888-841-9041

www.everestbiotech.com

**Research Use Only. Not for
diagnostic or therapeutic use.**

EB05143 - Goat Anti-CAPZB Antibody

Size: 100µg specific antibody in 200µl



Target Protein

Principal Names: CAPZB, capping protein (actin filament) muscle Z-line, beta, CAPB, CAPZ, CAPPB, Cap Z, RP4-657E11.7, MGC104401, MGC129749, MGC129750, Cap Z, F-actin capping protein beta subunit

Official Symbol: CAPZB

Accession Number(s): NP_004921.1

Human GeneID(s): [832](#)

Non-Human GeneID(s): 12345 (mouse)

Important Comments: This antibody is expected to be specific for the beta2 isoform of capping protein, found in non-muscle cells and should not recognise the beta1 form.

Immunogen

Peptide with sequence NDLVEALKRKQQC, from the C Terminus of the protein sequence according to NP_004921.1.

Please note the [peptide](#) is available for sale.

Purification and Storage

Purified from goat serum by ammonium sulphate precipitation followed by antigen affinity chromatography using the immunizing peptide.

Supplied at 0.5 mg/ml in Tris saline, 0.02% sodium azide, pH7.3 with 0.5% bovine serum albumin.

Aliquot and store at -20°C. Minimize freezing and thawing.

Applications Tested

Peptide ELISA: antibody detection limit dilution 1:32000.

Western blot: Approx 30kDa band observed in lysates of cell lines Jurkat, HeLa and NIH-3T3 and approx 28kDa band observed in Mouse, Rat and Pig Heart lysates (calculated MW of 30.6kDa according to Human NP_004921.1 and 31.3kDa according to Mouse NP_001032850.1, and 30.6kDa according to Rat NP_001005903.1 and Pig NP_001106915.1]. Recommended concentration: 0.1-0.3µg/ml. Primary incubation was 1 hour. This product has been successfully used in WB on Rat: Wang CY et al, J Biomed Sci. 2011 Feb 7;18:13. PMID: 21299884.

Species Reactivity

Tested: Human, Mouse, Rat, Pig

Expected from sequence similarity: Human, Mouse, Rat, Dog, Pig, Cow

Specific Reference

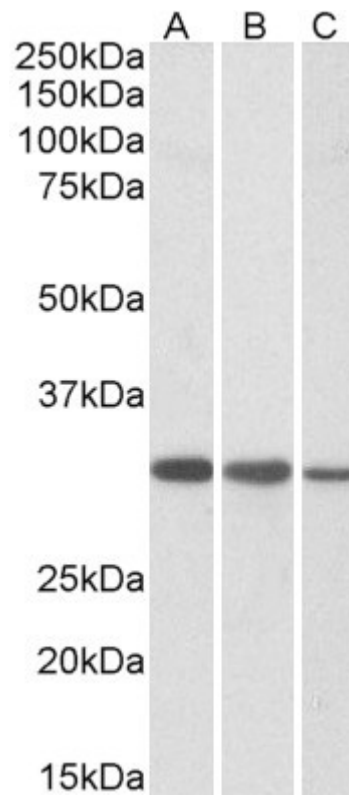
This antibody has been successfully used in Western blot on Rat:

Wang CY, Chen JK, Wu YT, Tsai MJ, Shyue SK, Yang CS, Tzeng SF.

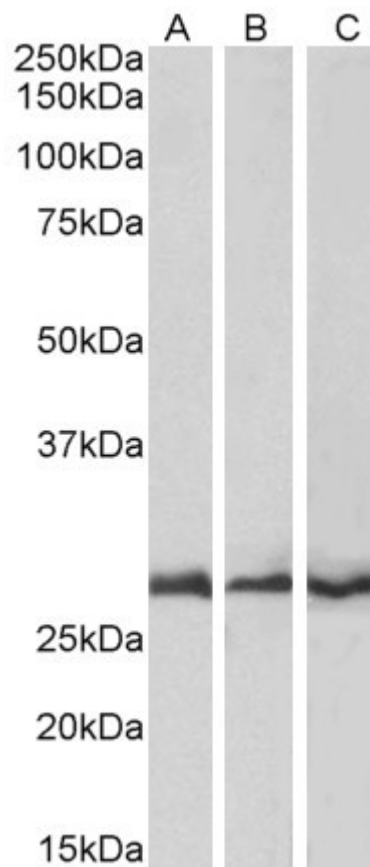
Reduction in antioxidant enzyme expression and sustained inflammation enhance tissue damage in the subacute phase of spinal cord contusive injury.

J Biomed Sci. 2011 Feb 7;18:13.

PMID: 21299884



EB05143 (0.01 μ g/ml) staining of Jurkat (A), HeLa (B) and NIH-3T3 (C) lysates (35 μ g protein in RIPA buffer).
Detected by chemiluminescence



EB05143 (0.1 μ g/ml) staining of Mouse (A), Rat (B) and Pig (C) Heart lysates (35 μ g protein in RIPA buffer).
Detected by chemiluminescence.