



# SZABO SCANDIC

Part of Europa Biosite

## Produktinformation



Forschungsprodukte & Biochemikalien



Zellkultur & Verbrauchsmaterial



Diagnostik & molekulare Diagnostik



Laborgeräte & Service

Weitere Information auf den folgenden Seiten!  
See the following pages for more information!



### Lieferung & Zahlungsart

siehe unsere [Liefer- und Versandbedingungen](#)

### Zuschläge

- Mindermengenzuschlag
- Trockeneiszuschlag
- Gefahrgutzuschlag
- Expressversand

### SZABO-SCANDIC HandelsgmbH

Quellenstraße 110, A-1100 Wien

T. +43(0)1 489 3961-0

F. +43(0)1 489 3961-7

[mail@szabo-scandic.com](mailto:mail@szabo-scandic.com)

[www.szabo-scandic.com](http://www.szabo-scandic.com)

[linkedin.com/company/szaboscandic](https://www.linkedin.com/company/szaboscandic) 



## UK Office

### Everest Biotech Ltd

Cherwell Innovation Centre  
77 Heyford Park  
Upper Heyford  
Oxfordshire  
OX25 5HD  
UK

Enquiries:

[info@everestbiotech.com](mailto:info@everestbiotech.com)

Sales:

[sales@everestbiotech.com](mailto:sales@everestbiotech.com)

Tech support:

[support@everestbiotech.com](mailto:support@everestbiotech.com)

Tel: +44 (0)1869 238326

Fax: +44 (0)1869 238327

## US Office

### Everest Biotech c/o Abcore

405 Maple Street, Suite A106  
Ramona,  
CA 92065  
USA

Inquiries:

[info@everestbiotech.com](mailto:info@everestbiotech.com)

Sales:

[usasales@everestbiotech.com](mailto:usasales@everestbiotech.com)

Tech support:

[support@everestbiotech.com](mailto:support@everestbiotech.com)

Tel: 888-320-4628 (toll-free)

Fax: 888-841-9041

[www.everestbiotech.com](http://www.everestbiotech.com)

**Research Use Only. Not for  
diagnostic or therapeutic use.**

## EB05148 - Goat Anti-SET / I2 alpha PP2A Antibody

Size: 100µg specific antibody in 200µl

### Target Protein

**Principal Names:** SET, SET nuclear oncogene, 2PP2A, I2PP2A, IGAAD, IPP2A2, PHAPII, TAF-I, TAF-IBETA, LA-DR-associated protein II, OTTHUMP0000022286, SET translocation (myeloid leukemia-associated), Template-Activating Factor-I, chromatin remodelling factor, inhibitor of granzyme A-activated DNase, inhibitor-2 of protein phosphatase-2A, protein phosphatase type 2A inhibitor, template-activating factor I, HLA-DR-associated protein II

**Official Symbol:** SET

**Accession Number(s):** NP\_003002.2

**Human GeneID(s):** [6418](#)

**Important Comments:** This antibody is expected to recognize isoform 2 (NP\_003002.2).

### Immunogen

Peptide with sequence SAPAAKVSKKELNS-C, from the N Terminus of the protein sequence according to NP\_003002.2.

Please note the [peptide](#) is available for sale.

### Purification and Storage

Purified from goat serum by ammonium sulphate precipitation followed by antigen affinity chromatography using the immunizing peptide.

Supplied at 0.5 mg/ml in Tris saline, 0.02% sodium azide, pH7.3 with 0.5% bovine serum albumin.

Aliquot and store at -20°C. Minimize freezing and thawing.

### Applications Tested

**Peptide ELISA:** antibody detection limit dilution 1:128000.

**Western blot:** Approx 38kDa band observed in lysates of Human Kidney lysates and of cell lines Daudi and Molt4 (calculated MW of 32.1kDa according to NP\_003002.2).

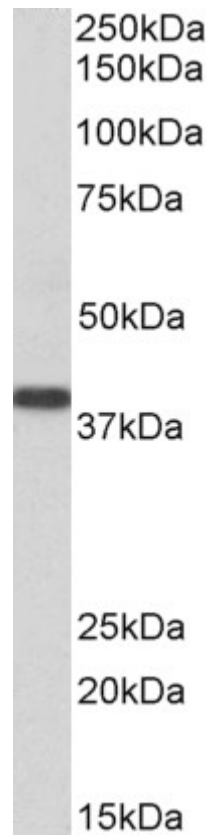
Recommended concentration: 0.3-1µg/ml. Primary incubation was 1 hour.

**IHC:** Paraffin embedded Human Kidney. Recommended concentration: 7µg/ml.

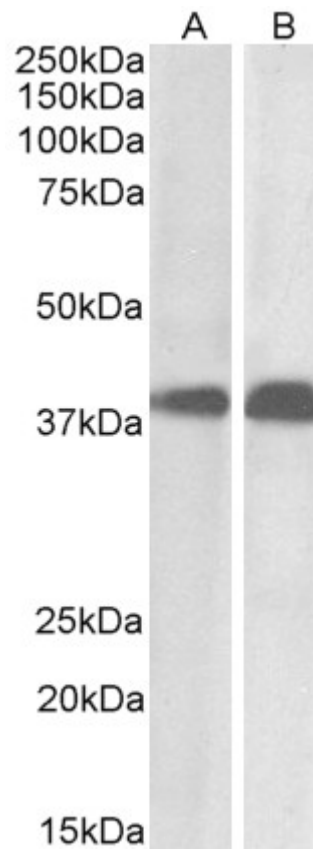
### Species Reactivity

**Tested:** Human

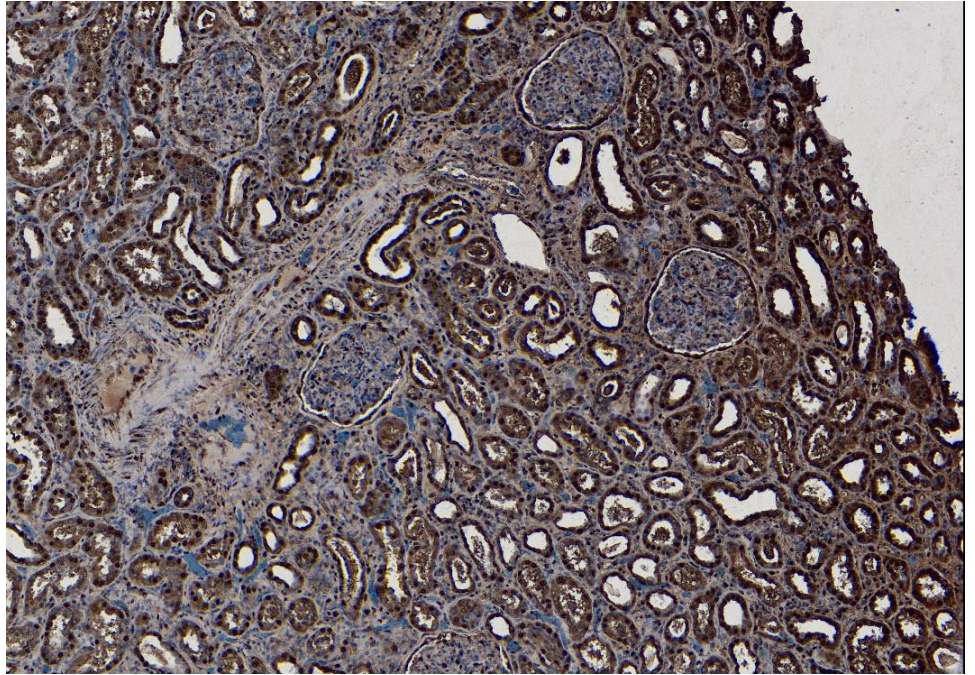
**Expected from sequence similarity:** Human, Cow



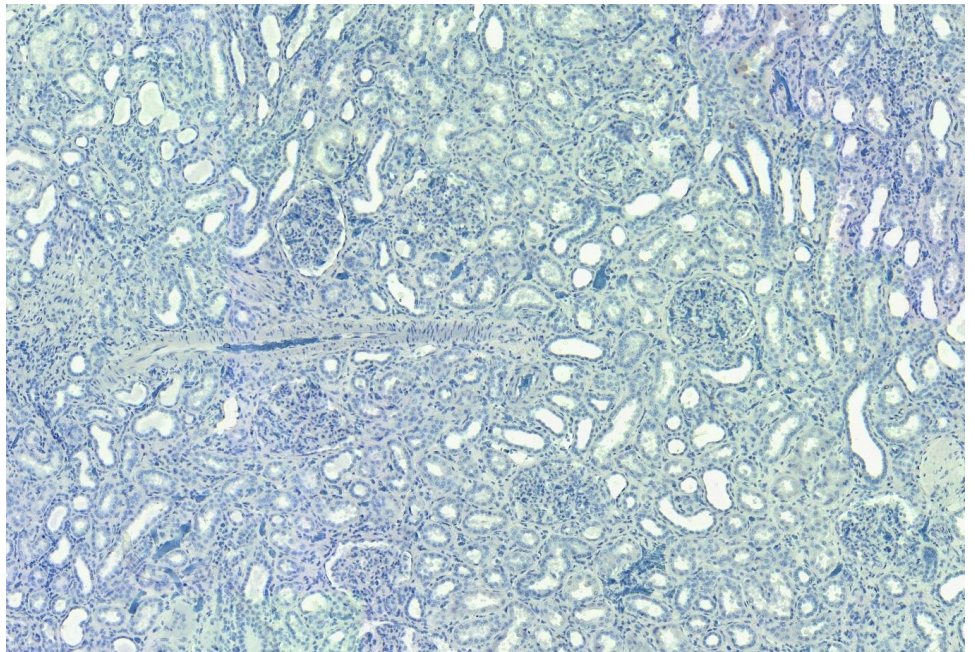
EB05148 (0.3 $\mu$ g/ml) staining of Human Kidney lysate (35 $\mu$ g protein in RIPA buffer). Detected by chemiluminescence.



EB05148 (0.01 $\mu$ g/ml) staining of Daudi (A) and Molt4 (B) cell lysate (35 $\mu$ g protein in RIPA buffer). Detected by chemiluminescence.



EB05148 (7µg/ml) staining of paraffin embedded Human Kidney. Heat induced antigen retrieval with citrate buffer pH 6, HRP-staining.



EB05148 Negative Control showing staining of paraffin embedded Human Kidney, with no primary antibody.