



SZABO SCANDIC

Part of Europa Biosite

Produktinformation



Forschungsprodukte & Biochemikalien



Zellkultur & Verbrauchsmaterial



Diagnostik & molekulare Diagnostik



Laborgeräte & Service

Weitere Information auf den folgenden Seiten!
See the following pages for more information!



Lieferung & Zahlungsart

siehe unsere [Liefer- und Versandbedingungen](#)

Zuschläge

- Mindermengenzuschlag
- Trockeneiszuschlag
- Gefahrgutzuschlag
- Expressversand

SZABO-SCANDIC HandelsgmbH

Quellenstraße 110, A-1100 Wien

T. +43(0)1 489 3961-0

F. +43(0)1 489 3961-7

mail@szabo-scandic.com

www.szabo-scandic.com

[linkedin.com/company/szaboscandic](https://www.linkedin.com/company/szaboscandic) 



UK Office

Everest Biotech Ltd

Cherwell Innovation Centre
77 Heyford Park
Upper Heyford
Oxfordshire
OX25 5HD
UK

Enquiries:

info@everestbiotech.com

Sales:

sales@everestbiotech.com

Tech support:

support@everestbiotech.com

Tel: +44 (0)1869 238326

Fax: +44 (0)1869 238327

US Office

Everest Biotech c/o Abcore

405 Maple Street, Suite A106
Ramona,
CA 92065
USA

Inquiries:

info@everestbiotech.com

Sales:

usasales@everestbiotech.com

Tech support:

support@everestbiotech.com

Tel: 888-320-4628 (toll-free)

Fax: 888-841-9041

www.everestbiotech.com

**Research Use Only. Not for
diagnostic or therapeutic use.**

EB05158 - Goat Anti-BIF-1 / SH3GLB1 Antibody

Size: 100µg specific antibody in 200µl



Target Protein

Principal Names: SH3GLB1, Bif-1, SH3-domain GRB2-like endophilin B1, CGI-61, KIAA0491, endophilin B1, Bax-interacting factor 1, SH3-containing protein SH3GLB1, SH3-domain, GRB2-like, endophilin B1, SH3-containing protein SH3GLB1 CGI-61 protein endophilin B1, dJ612B15.2

Official Symbol: SH3GLB1

Accession Number(s): NP_057093.1; NP_001193580.1; NP_001193581.1;
NP_001193582.1

Human GeneID(s): [51100](#)

Non-Human GeneID(s): 54673 (mouse)

Immunogen

Peptide with sequence C-QKGGKVPITYLELLN, from the C Terminus of the protein sequence according to NP_057093.1; NP_001193580.1; NP_001193581.1; NP_001193582.1.

Please note the [peptide](#) is available for sale.

Purification and Storage

Purified from goat serum by ammonium sulphate precipitation followed by antigen affinity chromatography using the immunizing peptide.

Supplied at 0.5 mg/ml in Tris saline, 0.02% sodium azide, pH7.3 with 0.5% bovine serum albumin.

Aliquot and store at -20°C. Minimize freezing and thawing.

Applications Tested

Peptide ELISA: antibody detection limit dilution 1:32000.

Western blot: Approx 40kDa band observed in lysates of cell lines HEK293 and NIH3T3, and approx. 38kDa in lysates of cell lines A431, RAW264.7 and KNRK (calculated MW of 40.8kDa according to Human NP_057093.1, Mouse NP_062337.1 and Rat NP_001011929.1). Recommended concentration: 0.1-0.3µg/ml. Primary incubated 1 hour at room temperature.

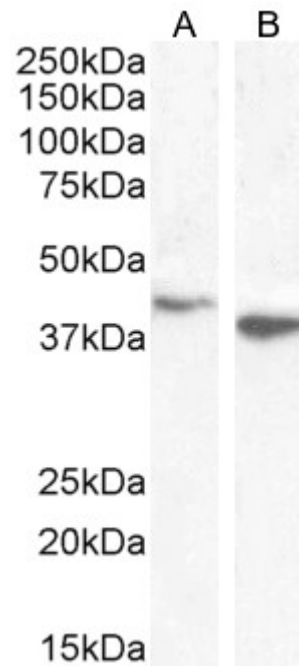
IHC: Paraffin embedded Human Colon. Recommended concentration: 2.5µg/ml.

Flow Cytometry: Flow cytometric analysis of A431 cells. Recommended concentration: 10µg/ml.

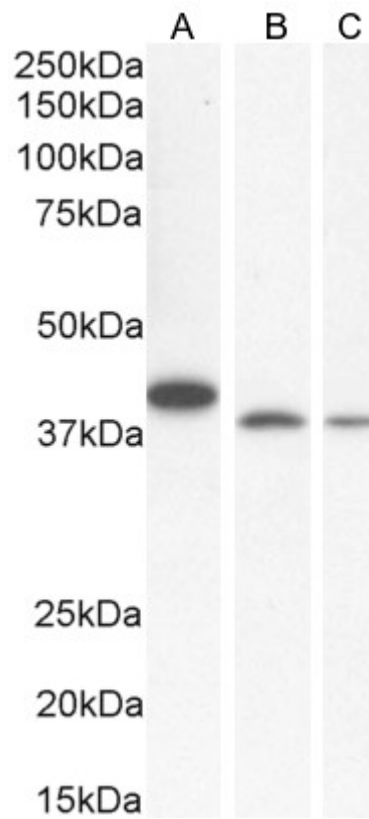
Species Reactivity

Tested: Human, Mouse, Rat

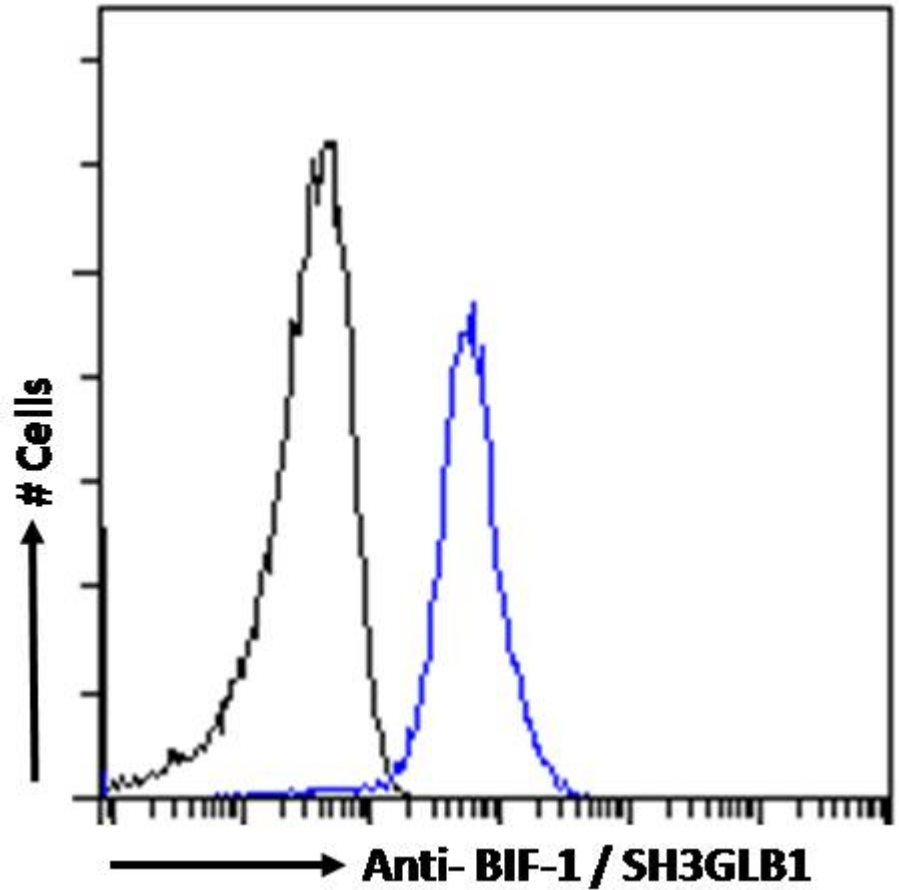
Expected from sequence similarity: Human, Mouse, Rat, Dog, Cow



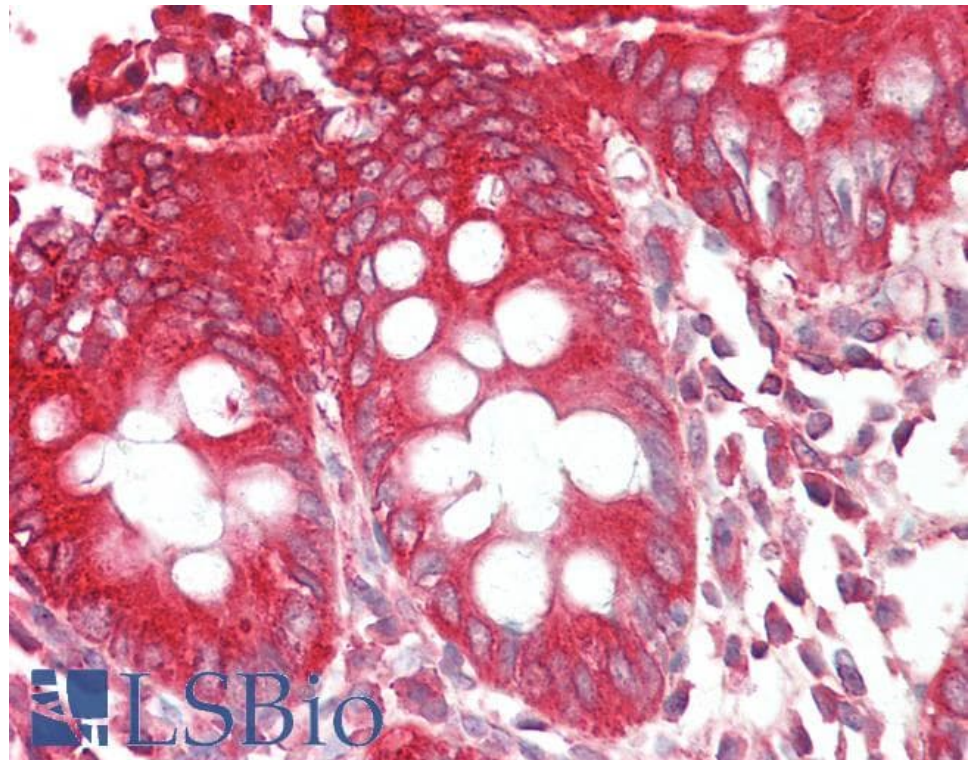
EB05158 staining (0.1µg/ml) of HEK293 (A) and A431 (B) cell lysate (RIPA buffer, 35µg total protein per lane).
Detected by chemiluminescence.



EB05158 staining (0.1µg/ml) of NIH3T3 (A) , RAW264.7 (B) and KNRK (C) cell lysate (RIPA buffer, 35µg total protein per lane). Detected by chemiluminescence.



EB05158-P1 Flow cytometric analysis of paraformaldehyde fixed A431 cells (blue line), permeabilized with 0.5% Triton. Primary incubation 1hr (10ug/ml) followed by Alexa Fluor 488 secondary antibody (1ug/ml). IgG control: Unimmunized goat IgG (black line) followed by Alexa Fluor 488 secondary antibody.



EB05158 (2.5µg/ml) staining of paraffin embedded Human Colon. Steamed antigen retrieval with citrate buffer pH 6, AP-staining.