



SZABO SCANDIC

Part of Europa Biosite

Produktinformation



Forschungsprodukte & Biochemikalien



Zellkultur & Verbrauchsmaterial



Diagnostik & molekulare Diagnostik



Laborgeräte & Service

Weitere Information auf den folgenden Seiten!
See the following pages for more information!



Lieferung & Zahlungsart

siehe unsere [Liefer- und Versandbedingungen](#)

Zuschläge

- Mindermengenzuschlag
- Trockeneiszuschlag
- Gefahrgutzuschlag
- Expressversand

SZABO-SCANDIC HandelsgmbH

Quellenstraße 110, A-1100 Wien

T. +43(0)1 489 3961-0

F. +43(0)1 489 3961-7

mail@szabo-scandic.com

www.szabo-scandic.com

[linkedin.com/company/szaboscandic](https://www.linkedin.com/company/szaboscandic) 



UK Office

Everest Biotech Ltd

Cherwell Innovation Centre
77 Heyford Park
Upper Heyford
Oxfordshire
OX25 5HD
UK

Enquiries:

info@everestbiotech.com

Sales:

sales@everestbiotech.com

Tech support:

support@everestbiotech.com

Tel: +44 (0)1869 238326

Fax: +44 (0)1869 238327

US Office

Everest Biotech c/o Abcore

405 Maple Street, Suite A106
Ramona,
CA 92065
USA

Inquiries:

info@everestbiotech.com

Sales:

usasales@everestbiotech.com

Tech support:

support@everestbiotech.com

Tel: 888-320-4628 (toll-free)

Fax: 888-841-9041

www.everestbiotech.com

**Research Use Only. Not for
diagnostic or therapeutic use.**

EB05159 - Goat Anti-PRAM1 Antibody

Size: 100µg specific antibody in 200µl



Target Protein

Principal Names: PRAM-1, PRAM-1 protein, PML-RARA target gene encoding an Adaptor Molecule-1, PML-RARA regulated adaptor molecule 1, MGC39864, PML-RAR

Official Symbol: PRAM1

Accession Number(s): NP_115528.4

Human GeneID(s): [84106](#)

Immunogen

Peptide with sequence DFCDPLENQPLPLGR, from the C Terminus of the protein sequence according to NP_115528.4.

Please note the [peptide](#) is available for sale.

Purification and Storage

Purified from goat serum by ammonium sulphate precipitation followed by antigen affinity chromatography using the immunizing peptide.

Supplied at 0.5 mg/ml in Tris saline, 0.02% sodium azide, pH7.3 with 0.5% bovine serum albumin.

Aliquot and store at -20°C. Minimize freezing and thawing.

Applications Tested

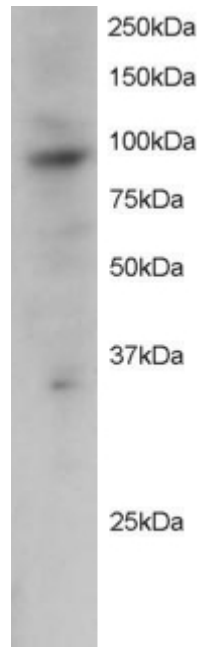
Peptide ELISA: antibody detection limit dilution 1:8000.

Western blot: Approx 90-100kDa band seen in Jurkat cell lysates. Recommended for use at 1-3µg/ml. Overnight incubation is recommended with this antibody. Please note that although the predicted MW of PRAM-1 is 79kDa, Moog-Lutz et al., (J. Biol. Chem, Jun 2001; 276: 22375 - 22381) detected aPRAM-1 migrating with an apparent molecular mass of 97 kDa and this is what we observed as well.

Species Reactivity

Tested: Human

Expected from sequence similarity: Human, Pig



EB05159 staining (2 μ g/ml) of Jurkat lysate (RIPA buffer, 30 μ g total protein per lane). Primary incubated for 12 hour. Detected by western blot using chemiluminescence.