



SZABO SCANDIC

Part of Europa Biosite

Produktinformation



Forschungsprodukte & Biochemikalien



Zellkultur & Verbrauchsmaterial



Diagnostik & molekulare Diagnostik



Laborgeräte & Service

Weitere Information auf den folgenden Seiten!
See the following pages for more information!



Lieferung & Zahlungsart

siehe unsere [Liefer- und Versandbedingungen](#)

Zuschläge

- Mindermengenzuschlag
- Trockeneiszuschlag
- Gefahrgutzuschlag
- Expressversand

SZABO-SCANDIC HandelsgmbH

Quellenstraße 110, A-1100 Wien

T. +43(0)1 489 3961-0

F. +43(0)1 489 3961-7

mail@szabo-scandic.com

www.szabo-scandic.com

[linkedin.com/company/szaboscandic](https://www.linkedin.com/company/szaboscandic) 

UK Office

Everest Biotech Ltd

Cherwell Innovation Centre
77 Heyford Park
Upper Heyford
Oxfordshire
OX25 5HD
UK

Enquiries:

info@everestbiotech.com

Sales:

sales@everestbiotech.com

Tech support:

support@everestbiotech.com

Tel: +44 (0)1869 238326

Fax: +44 (0)1869 238327

US Office

Everest Biotech c/o Abcore

405 Maple Street, Suite A106
Ramona,
CA 92065
USA

Inquiries:

info@everestbiotech.com

Sales:

usasales@everestbiotech.com

Tech support:

support@everestbiotech.com

Tel: 888-320-4628 (toll-free)

Fax: 888-841-9041

www.everestbiotech.com

**Research Use Only. Not for
diagnostic or therapeutic use.**

EB05230 - Goat Anti-PPP2CA / PPP2CB Antibody

Size: 100µg specific antibody in 200µl



Target Protein

Principal Names: PPP2CA, protein phosphatase 2 (formerly 2A), catalytic subunit, alpha isoform, PP2Ac, PP2CA, RP-C, PP2A-alpha, protein phosphatase 2, catalytic subunit, alpha isoform, replication protein C, serine/threonine protein phosphatase 2A, catalytic subunit, alpha isoform, serine/threonine-protein phosphatase 2A catalytic subunit alpha isoform, PPP2CB, protein phosphatase 2 (formerly 2A), catalytic subunit, beta isoform, PP2CB, PP2A-beta, protein phosphatase 2, catalytic subunit, beta isoform, protein phosphatase type 2A catalytic subunit, serine/threonine protein phosphatase 2A, catalytic subunit, beta isoform

Official Symbol: PPP2CA / PPP2CB

Accession Number(s): NP_002706.1; NP_004147.1

Human GeneID(s): [5515](#) , [5516](#)

Non-Human GeneID(s): 19052 (mouse), 24672 (rat)

Important Comments: Two variants NP_001009552.1 and NP_004147.1 represent identical protein.

Immunogen

Peptide with sequence C-EPHVTRRTPDYFL, from the C Terminus of the protein sequence according to NP_002706.1; NP_004147.1.

Please note the [peptide](#) is available for sale.

Purification and Storage

Purified from goat serum by ammonium sulphate precipitation followed by antigen affinity chromatography using the immunizing peptide.

Supplied at 0.5 mg/ml in Tris saline, 0.02% sodium azide, pH7.3 with 0.5% bovine serum albumin.

Aliquot and store at -20°C. Minimize freezing and thawing.

Applications Tested

Peptide ELISA: antibody detection limit dilution 1:128000.

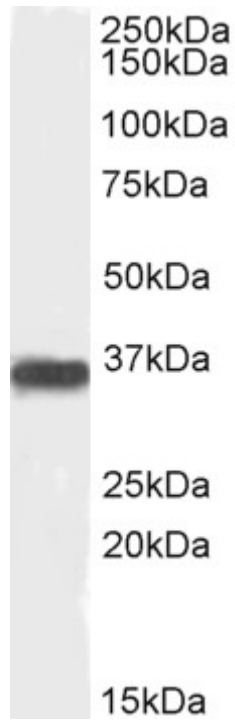
Western blot: Approx 36kDa band observed in Human Cerebellum and in Mouse, Rat and Pig Brain lysates (calculated MW of 35.6kDa according to Human NP_002706.1). Recommended concentration: 1-3µg/ml. Primary incubation was 1 hour.

IHC: Paraffin embedded Human Kidney and Thyroid. Recommended concentration: 10µg/ml.

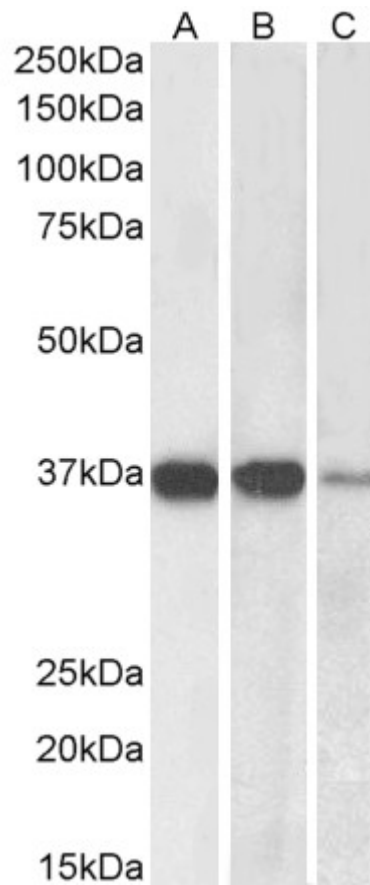
Species Reactivity

Tested: Human, Mouse, Rat, Pig

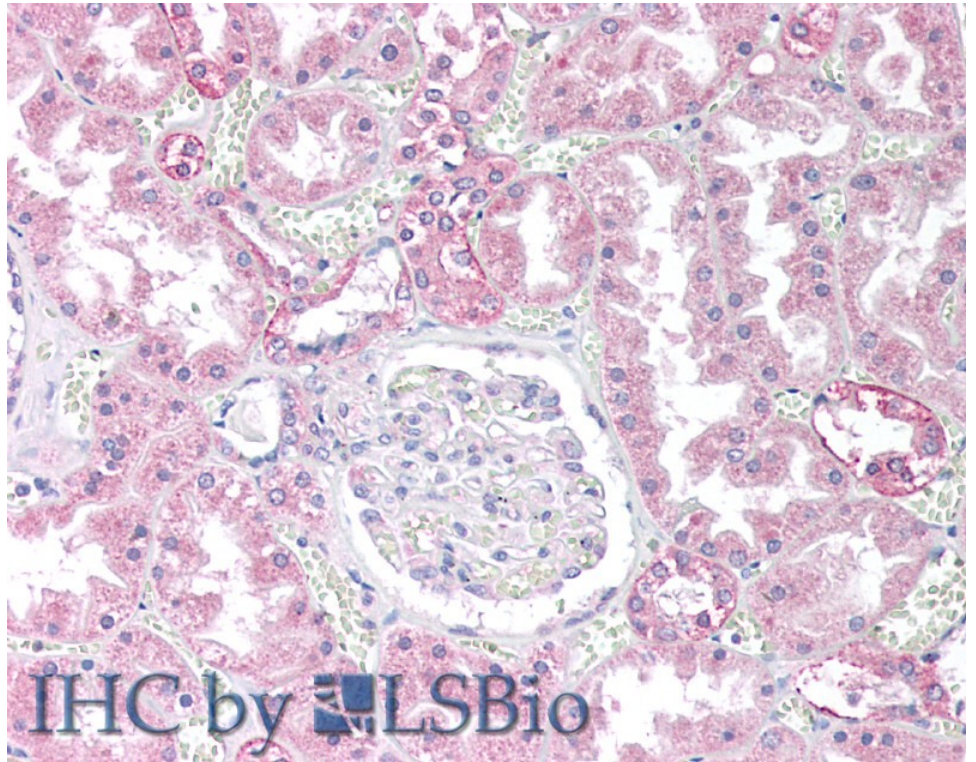
Expected from sequence similarity: Human, Mouse, Rat, Dog, Pig, Cow



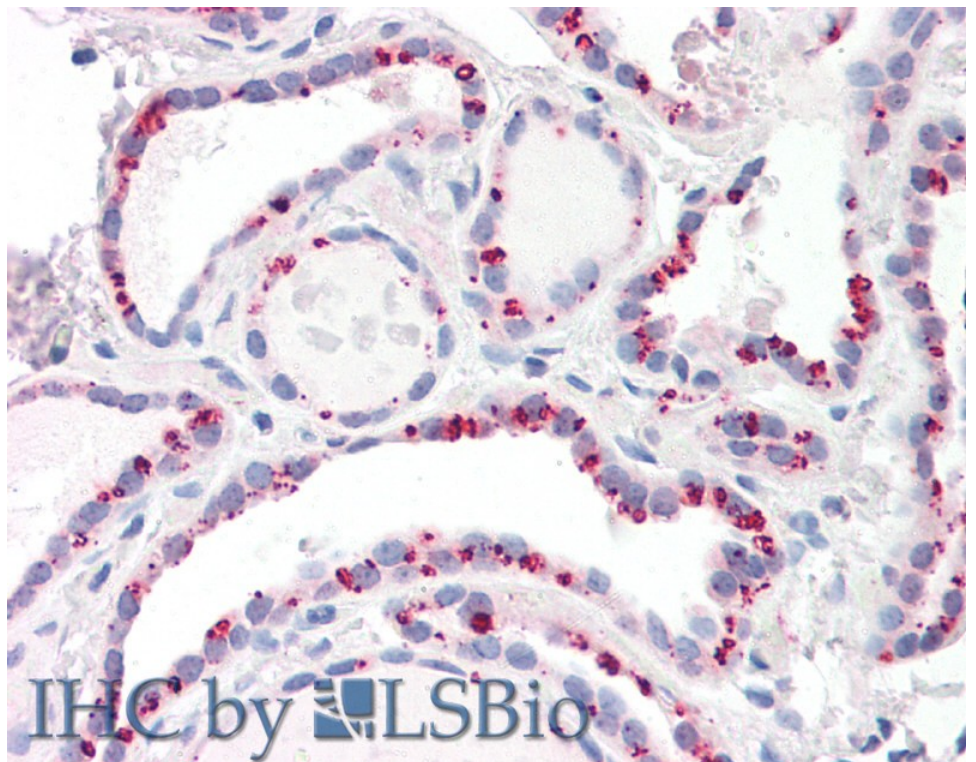
EB05230 (0.1 μ g/ml) staining of Human Cerebellum lysate (35 μ g protein in RIPA buffer). Detected by chemiluminescence.



EB05230 (0.03 μ g/ml) staining of Mouse (A), Rat (B) and Pig (C) Brain lysate (35 μ g protein in RIPA buffer). Detected by chemiluminescence.



EB05230 (10 μ g/ml) staining of paraffin embedded Human Kidney. Steamed antigen retrieval with citrate buffer pH 6, AP-staining.



EB05230 (10 μ g/ml) staining of paraffin embedded Human Thyroid. Steamed antigen retrieval with citrate buffer pH 6, AP-staining.