



SZABO SCANDIC

Part of Europa Biosite

Produktinformation



Forschungsprodukte & Biochemikalien



Zellkultur & Verbrauchsmaterial



Diagnostik & molekulare Diagnostik



Laborgeräte & Service

Weitere Information auf den folgenden Seiten!
See the following pages for more information!



Lieferung & Zahlungsart

siehe unsere [Liefer- und Versandbedingungen](#)

Zuschläge

- Mindermengenzuschlag
- Trockeneiszuschlag
- Gefahrgutzuschlag
- Expressversand

SZABO-SCANDIC HandelsgmbH

Quellenstraße 110, A-1100 Wien

T. +43(0)1 489 3961-0

F. +43(0)1 489 3961-7

mail@szabo-scandic.com

www.szabo-scandic.com

[linkedin.com/company/szaboscandic](https://www.linkedin.com/company/szaboscandic) 



UK Office

Everest Biotech Ltd

Cherwell Innovation Centre
77 Heyford Park
Upper Heyford
Oxfordshire
OX25 5HD
UK

Enquiries:

info@everestbiotech.com

Sales:

sales@everestbiotech.com

Tech support:

support@everestbiotech.com

Tel: +44 (0)1869 238326

Fax: +44 (0)1869 238327

US Office

Everest Biotech c/o Abcore

405 Maple Street, Suite A106
Ramona,
CA 92065
USA

Inquiries:

info@everestbiotech.com

Sales:

usasales@everestbiotech.com

Tech support:

support@everestbiotech.com

Tel: 888-320-4628 (toll-free)

Fax: 888-841-9041

www.everestbiotech.com

**Research Use Only. Not for
diagnostic or therapeutic use.**

EB05231 - Goat Anti-PPP2R5E Antibody

Size: 100µg specific antibody in 200µl



Target Protein

Principal Names: PPP2R5E, protein phosphatase 2, regulatory subunit B (B56), epsilon isoform, PP2A, B subunit, B1 epsilon isoform, PP2A, B subunit, R5 epsilon isoform, PP2A, B subunit, B56 epsilon isoform, PP2A, B subunit, PR61 epsilon isoform, Serine/threonine protein phosphatase 2A, 56 kDa regulatory subunit, epsilon isoform, protein phosphatase 2, regulatory subunit B1, epsilon isoform, PP2A, B subunit, R5 epsilon, epsilon isoform of regulatory subunit B56, protein phosphatase 2A, serine/threonine protein phosphatase 2A, 56 kDa regulatory subunit, epsilon

Official Symbol: PPP2R5E

Accession Number(s): NP_006237.1

Human GeneID(s): [5529](#)

Immunogen

Peptide with sequence C-LKRGLRRDGIIPT, from the C Terminus of the protein sequence according to NP_006237.1.

Please note the [peptide](#) is available for sale.

Purification and Storage

Purified from goat serum by ammonium sulphate precipitation followed by antigen affinity chromatography using the immunizing peptide.

Supplied at 0.5 mg/ml in Tris saline, 0.02% sodium azide, pH7.3 with 0.5% bovine serum albumin.

Aliquot and store at -20°C. Minimize freezing and thawing.

Applications Tested

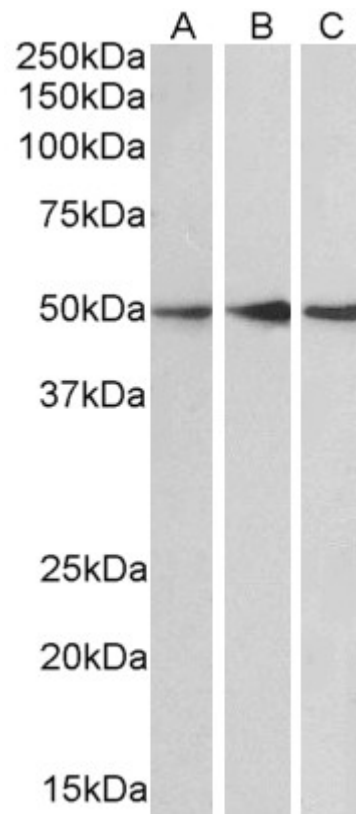
Peptide ELISA: antibody detection limit dilution 1:16000.

Western blot: Approx 50kDa band observed in Human (Cerebellum), Mouse and Rat Brain lysates (calculated MW of 54.7kDa according to Human NP_001269108.1 and Mouse NP_036154.1 and 50.4kDa according to Rat NP_001100210.1). Recommended concentration: 0.1-0.3µg/ml.

Species Reactivity

Tested: Human, Mouse, Rat

Expected from sequence similarity: Human, Mouse, Rat, Dog, Cow



EB05231 (0.1µg/ml) staining of Human Cerebellum (A), Mouse (B) and Rat (C) Brain lysate (35µg protein in RIPA buffer). Primary incubation was 1 hour. Detected by chemiluminescence.