



# SZABO SCANDIC

Part of Europa Biosite

## Produktinformation



Forschungsprodukte & Biochemikalien



Zellkultur & Verbrauchsmaterial



Diagnostik & molekulare Diagnostik



Laborgeräte & Service

Weitere Information auf den folgenden Seiten!  
See the following pages for more information!



### Lieferung & Zahlungsart

siehe unsere [Liefer- und Versandbedingungen](#)

### Zuschläge

- Mindermengenzuschlag
- Trockeneiszuschlag
- Gefahrgutzuschlag
- Expressversand

### SZABO-SCANDIC HandelsgmbH

Quellenstraße 110, A-1100 Wien

T. +43(0)1 489 3961-0

F. +43(0)1 489 3961-7

[mail@szabo-scandic.com](mailto:mail@szabo-scandic.com)

[www.szabo-scandic.com](http://www.szabo-scandic.com)

[linkedin.com/company/szaboscandic](https://www.linkedin.com/company/szaboscandic) 



## UK Office

### Everest Biotech Ltd

Cherwell Innovation Centre  
77 Heyford Park  
Upper Heyford  
Oxfordshire  
OX25 5HD  
UK

Enquiries:

[info@everestbiotech.com](mailto:info@everestbiotech.com)

Sales:

[sales@everestbiotech.com](mailto:sales@everestbiotech.com)

Tech support:

[support@everestbiotech.com](mailto:support@everestbiotech.com)

Tel: +44 (0)1869 238326

Fax: +44 (0)1869 238327

## US Office

### Everest Biotech c/o Abcore

405 Maple Street, Suite A106  
Ramona,  
CA 92065  
USA

Inquiries:

[info@everestbiotech.com](mailto:info@everestbiotech.com)

Sales:

[usasales@everestbiotech.com](mailto:usasales@everestbiotech.com)

Tech support:

[support@everestbiotech.com](mailto:support@everestbiotech.com)

Tel: 888-320-4628 (toll-free)

Fax: 888-841-9041

[www.everestbiotech.com](http://www.everestbiotech.com)

**Research Use Only. Not for  
diagnostic or therapeutic use.**

## EB05297 - Goat Anti-ELMO1 Antibody

Size: 100µg specific antibody in 200µl



### Target Protein

**Principal Names:** ELMO1, engulfment and cell motility 1 (ced-12 homolog, C. elegans), CED12, KIAA0281, ced-12 homolog 1, engulfment and cell motility 1, CED-12, ELMO-1, MGC126406, OTTHUMP00000207056, OTTHUMP00000207060

**Official Symbol:** ELMO1

**Accession Number(s):** NP\_055615.8; NP\_569709.1; NP\_001034548.1

**Human GeneID(s):** [9844](#)

**Non-Human GeneID(s):** 140580 (mouse)

**Important Comments:** This antibody is expected to recognise both human isoforms of this protein. NP\_569709.1 and NP\_001034548.1 represent the same isoform.

### Immunogen

Peptide with sequence PKEPSNYDFVYDCN, from the C Terminus of the protein sequence according to NP\_055615.8; NP\_569709.1; NP\_001034548.1.

Please note the [peptide](#) is available for sale.

### Purification and Storage

Purified from goat serum by ammonium sulphate precipitation followed by antigen affinity chromatography using the immunizing peptide.

Supplied at 0.5 mg/ml in Tris saline, 0.02% sodium azide, pH7.3 with 0.5% bovine serum albumin.

Aliquot and store at -20°C. Minimize freezing and thawing.

### Applications Tested

**Peptide ELISA:** antibody detection limit dilution 1:128000.

**Western blot:** Approx 83kDa band observed in Human Brain (Frontal Cortex) lysates, in Mouse and Rat Brain lysates and in lysates of cell line Jurkat (calculated MW of 83.8kDa according to NP\_055615.8). Recommended concentration: 0.1-0.3µg/ml. Primary incubation was 1 hour.

**Immunoprecipitation:** A customer found positive results in IP on Human promyelocytic leukemia cells (HL60). **This data is from a previous batch, not on sale.**

### Species Reactivity

**Tested:** Human, Mouse, Rat

**Expected from sequence similarity:** Human, Mouse, Rat, Dog, Cow, Zebrafish

### Specific References

**This antibody (previous batch) has been successfully used in Western blot in Zebrafish:**

Krishna Rakesh Sharma, Karl Heckler, Sandra J. Stoll, Jan-Luuk Hillebrands, Katharina Kynast, Esther Herpel, Stefan Porubsky, Marlies Elger, Boris Hadaschik, Karen Bieback, Hans-Peter Hammes, Peter P. Nawroth, and Jens Kroll

ELMO1 protects renal structure and ultrafiltration in kidney development and under diabetic condition  
Sci Rep. 2016 Nov 16;6:37172

PMID: 27849017

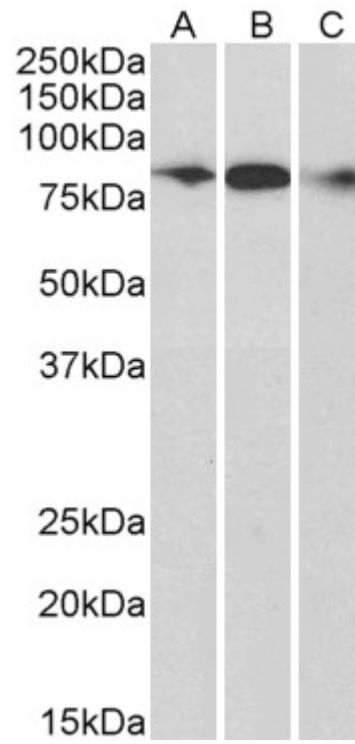
**This antibody (previous batch) has been successfully used in Western blot in Human:**

Schäker K, Bartsch S, Patry C, Stoll SJ, Hillebrands JL, Wieland T, Kroll J.

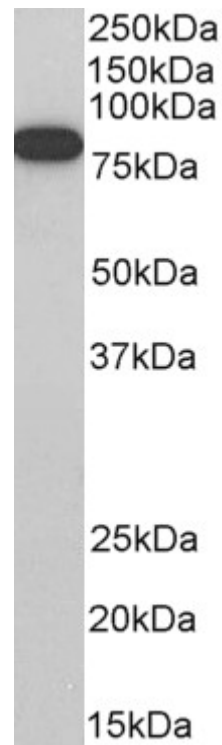
The bipartite rac1 Guanine nucleotide exchange factor engulfment and cell motility 1/dedicator of cy  
(elmo1/dock180) protects endothelial cells from apoptosis in blood vessel development.  
J Biol Chem. 2015 Mar 6;290(10):6408  
PMID: 25586182

**This antibody (previous batch) has been successfully used in Western blot and IP  
in Zebrafish:**

Epting D, Wendik B, Bennewitz K, Dietz CT, Driever W, Kroll J.  
The Rac1 regulator ELMO1 controls vascular morphogenesis in zebrafish.  
Circ Res. 2010 Jul 9;107(1):45-55.  
PMID: 20466982



EB05297 (0.3 $\mu$ g/ml) staining of Human Frontal Cortex (A), Mouse (B) and Rat (C) Brain lysate (35 $\mu$ g protein in RIPA buffer). Detected by chemiluminescence.



EB05297 (0.3 $\mu$ g/ml) staining of Jurkat cell lysate (35 $\mu$ g protein in RIPA buffer). Detected by chemiluminescence.