



SZABO SCANDIC

Part of Europa Biosite

Produktinformation



Forschungsprodukte & Biochemikalien



Zellkultur & Verbrauchsmaterial



Diagnostik & molekulare Diagnostik



Laborgeräte & Service

Weitere Information auf den folgenden Seiten!
See the following pages for more information!



Lieferung & Zahlungsart

siehe unsere [Liefer- und Versandbedingungen](#)

Zuschläge

- Mindermengenzuschlag
- Trockeneiszuschlag
- Gefahrgutzuschlag
- Expressversand

SZABO-SCANDIC HandelsgmbH

Quellenstraße 110, A-1100 Wien

T. +43(0)1 489 3961-0

F. +43(0)1 489 3961-7

mail@szabo-scandic.com

www.szabo-scandic.com

[linkedin.com/company/szaboscandic](https://www.linkedin.com/company/szaboscandic) 



UK Office

Everest Biotech Ltd

Cherwell Innovation Centre
77 Heyford Park
Upper Heyford
Oxfordshire
OX25 5HD
UK

Enquiries:

info@everestbiotech.com

Sales:

sales@everestbiotech.com

Tech support:

support@everestbiotech.com

Tel: +44 (0)1869 238326

Fax: +44 (0)1869 238327

US Office

Everest Biotech c/o Abcore

405 Maple Street, Suite A106
Ramona,
CA 92065
USA

Inquiries:

info@everestbiotech.com

Sales:

usasales@everestbiotech.com

Tech support:

support@everestbiotech.com

Tel: 888-320-4628 (toll-free)

Fax: 888-841-9041

www.everestbiotech.com

**Research Use Only. Not for
diagnostic or therapeutic use.**

EB05305 - Goat Anti-ELMO2 Antibody

Size: 100µg specific antibody in 200µl



Target Protein

Principal Names: ELMO2, engulfment and cell motility 2 (ced-12 homolog, C. elegans), CED12, FLJ11656, KIAA1834, ced-12 homolog 2, PH domain protein CED12A, engulfment and cell motility 2, engulfment and cell motility 2, RP11-394O2.2, CED-12, ELMO-2

Official Symbol: ELMO2

Accession Number(s): NP_877496.1; NP_573403.1; NP_001305182.1

Human GeneID(s): [63916](#)

Non-Human GeneID(s): 140579 (mouse)

Immunogen

Peptide with sequence C-PKEPSSYDFVYHYG, from the C Terminus of the protein sequence according to NP_877496.1; NP_573403.1; NP_001305182.1.

Please note the [peptide](#) is available for sale.

Purification and Storage

Purified from goat serum by ammonium sulphate precipitation followed by antigen affinity chromatography using the immunizing peptide.

Supplied at 0.5 mg/ml in Tris saline, 0.02% sodium azide, pH7.3 with 0.5% bovine serum albumin.

Aliquot and store at -20°C. Minimize freezing and thawing.

Applications Tested

Peptide ELISA: antibody detection limit dilution 1:32000.

Western blot: Approx 80kDa band observed in lysates of cell lines HEK293, Jurkat, RAW264.7 and in Human Cerebellum and Rat Brain lysates (calculated MW of 82.6kDa according to Human NP_573403.1 and NP_877496.1 and Mouse NP_525026.2, and 83.7kDa according to Rat NP_001128427.1). Recommended concentration: 0.3-1µg/ml.

IHC: In paraffin embedded Human Prostate shows pixelated staining in the cytoplasm of stroma cells. Recommended concentration: 3-6µg/ml.

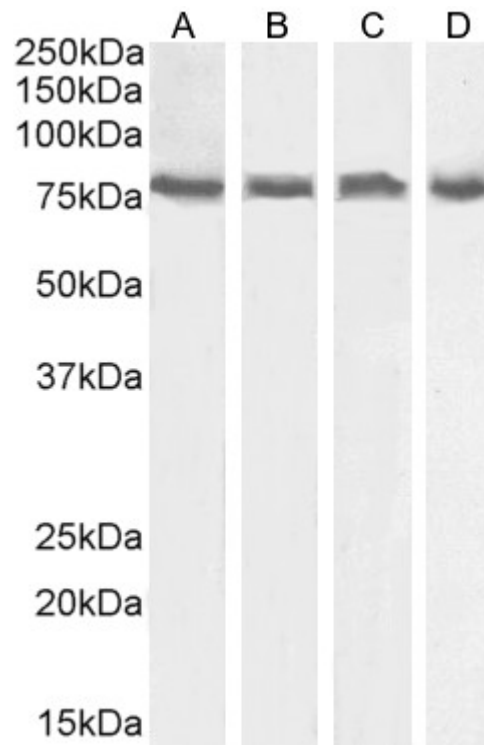
Immunofluorescence: Strong expression of the protein seen in A549 and U2OS cells. Recommended concentration: 10µg/ml.

Flow Cytometry: Flow cytometric analysis of A549 cells. Recommended concentration: 10µg/ml.

Species Reactivity

Tested: Human, Mouse, Rat

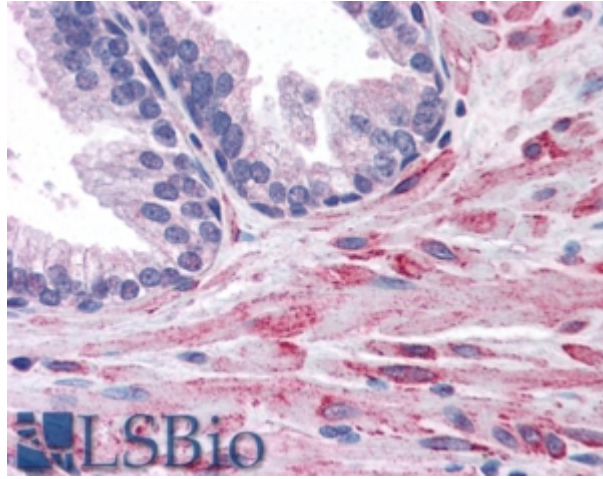
Expected from sequence similarity: Human, Mouse, Rat, Dog, Pig, Cow



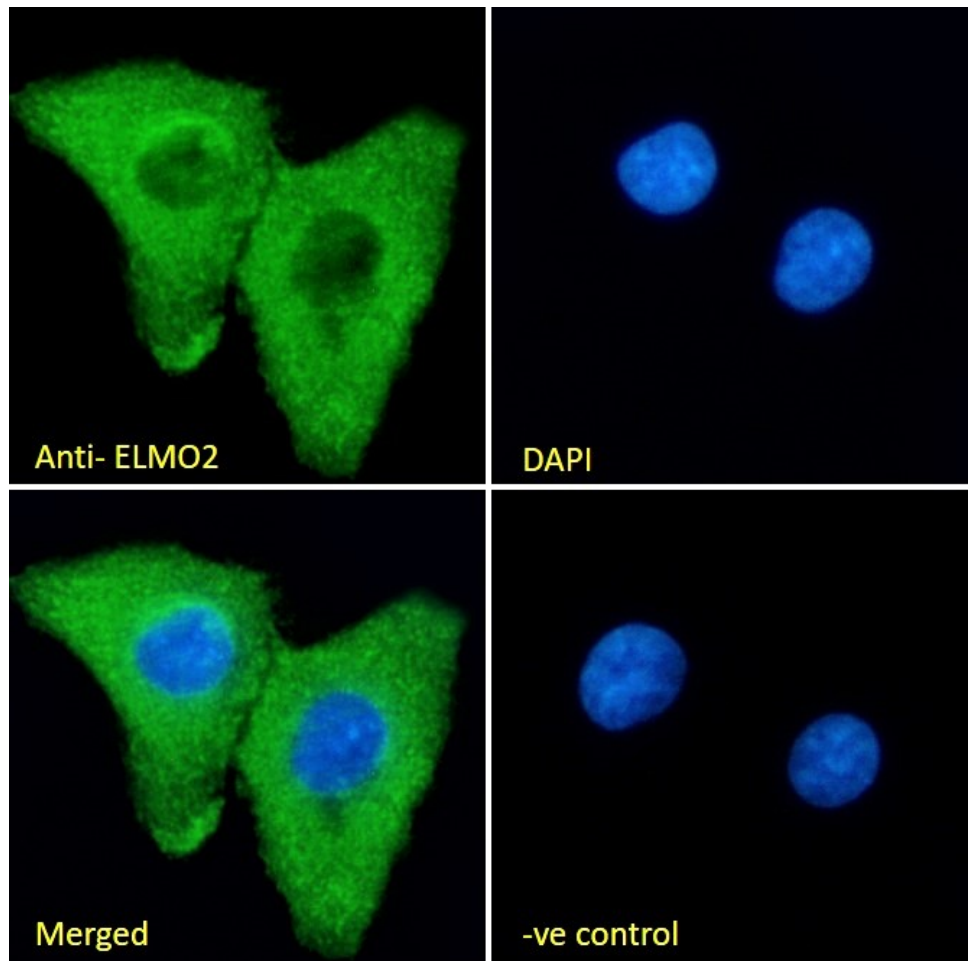
EB05305 (0.5µg/ml) staining of Jurkat (A), HEK293 (B), RAW264.7 (C) and KNRK (D) cell lysate (35µg protein in RIPA buffer). Detected by chemiluminescence.



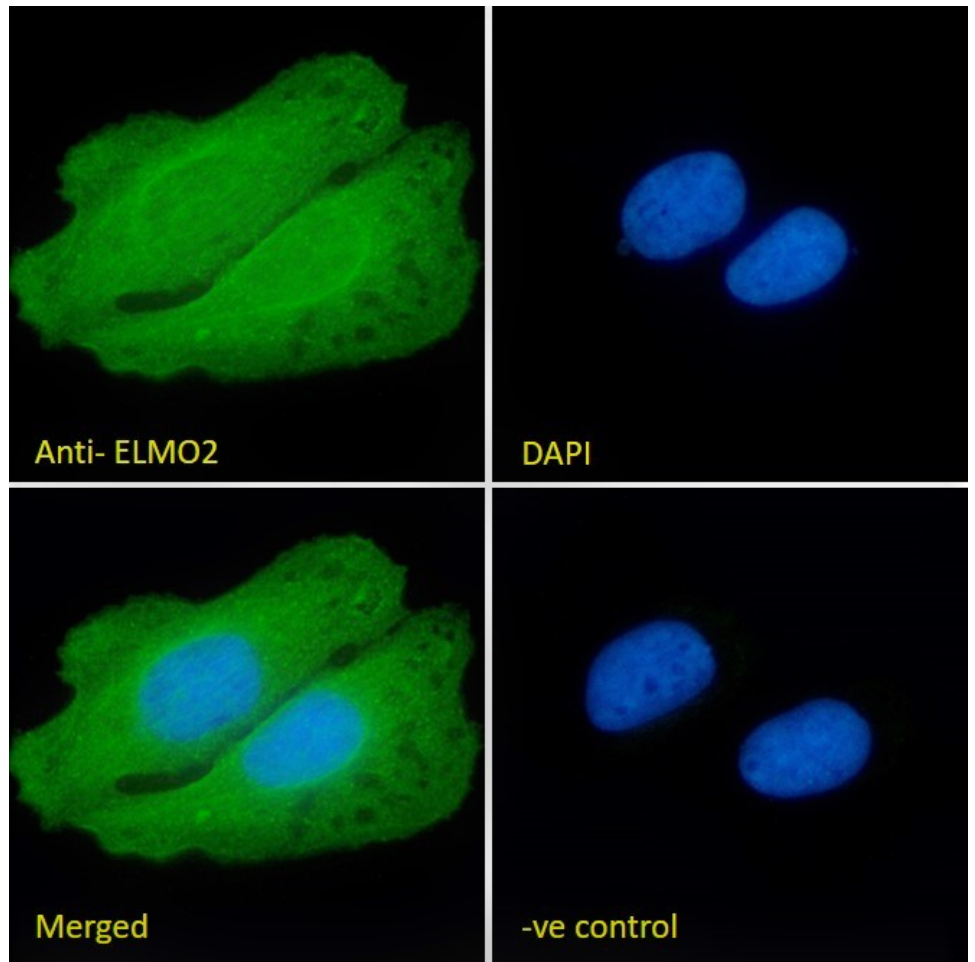
EB05305 (0.5µg/ml) staining of Human Cerebellum (A) and Rat Brain (B) lysate (35µg protein in RIPA buffer). Detected by chemiluminescence.



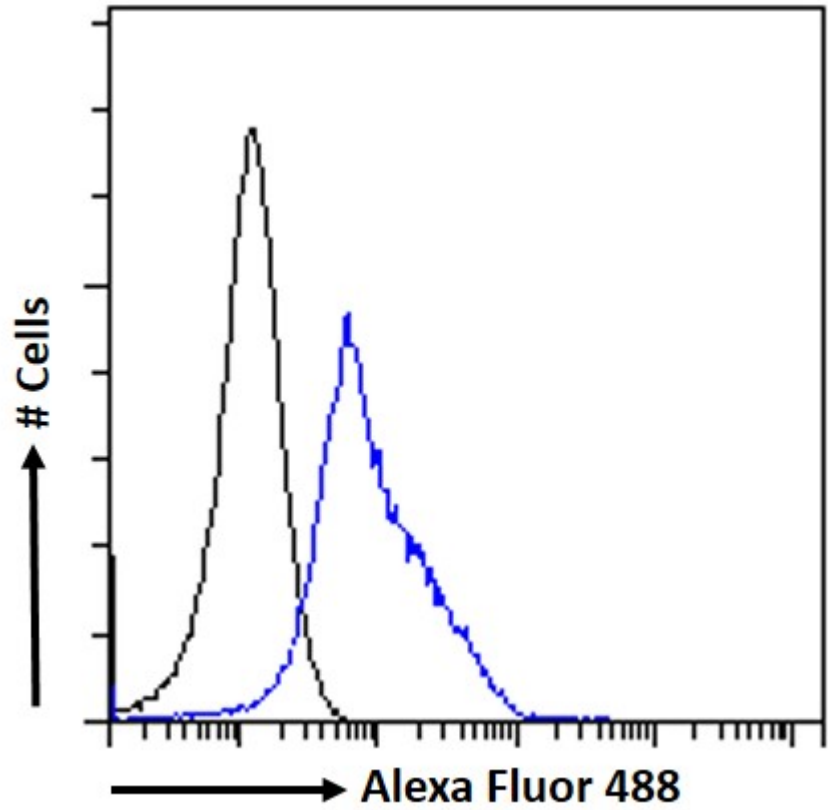
EB05305 (3.8µg/ml) staining of paraffin embedded Human Prostate. Steamed antigen retrieval with citrate buffer pH 6, AP-staining.



EB05305 Immunofluorescence analysis of paraformaldehyde fixed A549 cells, permeabilized with 0.15% Triton. Primary incubation 1hr (10ug/ml) followed by Alexa Fluor 488 secondary antibody (2ug/ml), showing cytoplasmic staining. The nuclear stain is DAPI (blue). Negative control: Unimmunized goat IgG (10ug/ml) followed by Alexa Fluor 488 secondary antibody (2ug/ml).



EB05305 Immunofluorescence analysis of paraformaldehyde fixed U2OS cells, permeabilized with 0.15% Triton. Primary incubation 1hr (10ug/ml) followed by Alexa Fluor 488 secondary antibody (2ug/ml), showing cytoplasmic and nuclear staining. The nuclear stain is DAPI (blue). Negative control: Unimmunized goat IgG (10ug/ml) followed by Alexa Fluor 488 secondary antibody (2ug/ml).



EB05305 Flow cytometric analysis of paraformaldehyde fixed A549 cells (blue line), permeabilized with 0.5% Triton. Primary incubation 1hr (10ug/ml) followed by Alexa Fluor 488 secondary antibody (1ug/ml). IgG control: Unimmunized goat IgG (black line) followed by Alexa Fluor 488 secondary antibody.