



SZABO SCANDIC

Part of Europa Biosite

Produktinformation



Forschungsprodukte & Biochemikalien



Zellkultur & Verbrauchsmaterial



Diagnostik & molekulare Diagnostik



Laborgeräte & Service

Weitere Information auf den folgenden Seiten!
See the following pages for more information!



Lieferung & Zahlungsart

siehe unsere [Liefer- und Versandbedingungen](#)

Zuschläge

- Mindermengenzuschlag
- Trockeneiszuschlag
- Gefahrgutzuschlag
- Expressversand

SZABO-SCANDIC HandelsgmbH

Quellenstraße 110, A-1100 Wien

T. +43(0)1 489 3961-0

F. +43(0)1 489 3961-7

mail@szabo-scandic.com

www.szabo-scandic.com

[linkedin.com/company/szaboscandic](https://www.linkedin.com/company/szaboscandic) 



UK Office

Everest Biotech Ltd

Cherwell Innovation Centre
77 Heyford Park
Upper Heyford
Oxfordshire
OX25 5HD
UK

Enquiries:

info@everestbiotech.com

Sales:

sales@everestbiotech.com

Tech support:

support@everestbiotech.com

Tel: +44 (0)1869 238326

Fax: +44 (0)1869 238327

US Office

Everest Biotech c/o Abcore

405 Maple Street, Suite A106
Ramona,
CA 92065
USA

Inquiries:

info@everestbiotech.com

Sales:

usasales@everestbiotech.com

Tech support:

support@everestbiotech.com

Tel: 888-320-4628 (toll-free)

Fax: 888-841-9041

www.everestbiotech.com

**Research Use Only. Not for
diagnostic or therapeutic use.**

EB05313 - Goat Anti-TBL1X / TBL1XR1 Antibody

Size: 100µg specific antibody in 200µl



Target Protein

Principal Names: TBL1X, TBL1XR1, EBI, TBL1, transducin (beta)-like 1X-linked, transducin (beta)-like 1, transducin (beta)-like 1 X-linked, transducin (beta)-like 1X-linked receptor 1, C21, DC42, FLJ12894, IRA1, TBLR1, TBL1-related protein 1, nuclear receptor co-repressor/HDAC3 complex subunit, SMAP55, F-box-like/WD repeat-containing protein TBL1X, OTTHUMP00000022879, transducin beta-like 1X

Official Symbol: TBL1X

Accession Number(s): NP_005638.1; NP_001132938.1; NP_001132939.1;
NP_001132940.1; NP_078941.2

Human GeneID(s): [6907](#) , [79718](#)

Important Comments: This antibody is also expected to recognise the human protein TBLR1 (NP_078941), which is very similar. Variants (NP_005638.1; NP_001132938.1) encode isoform a (TBL1X) and variants (NP_001132939.1; NP_001132940.1) encode isoform b (TBLX1).

Immunogen

Peptide with sequence SASDGSVCVLDLRK, from the C Terminus of the protein sequence according to NP_005638.1; NP_001132938.1; NP_001132939.1;
NP_001132940.1; NP_078941.2.

Please note the [peptide](#) is available for sale.

Purification and Storage

Purified from goat serum by ammonium sulphate precipitation followed by antigen affinity chromatography using the immunizing peptide.

Supplied at 0.5 mg/ml in Tris saline, 0.02% sodium azide, pH7.3 with 0.5% bovine serum albumin.

Aliquot and store at -20°C. Minimize freezing and thawing.

Applications Tested

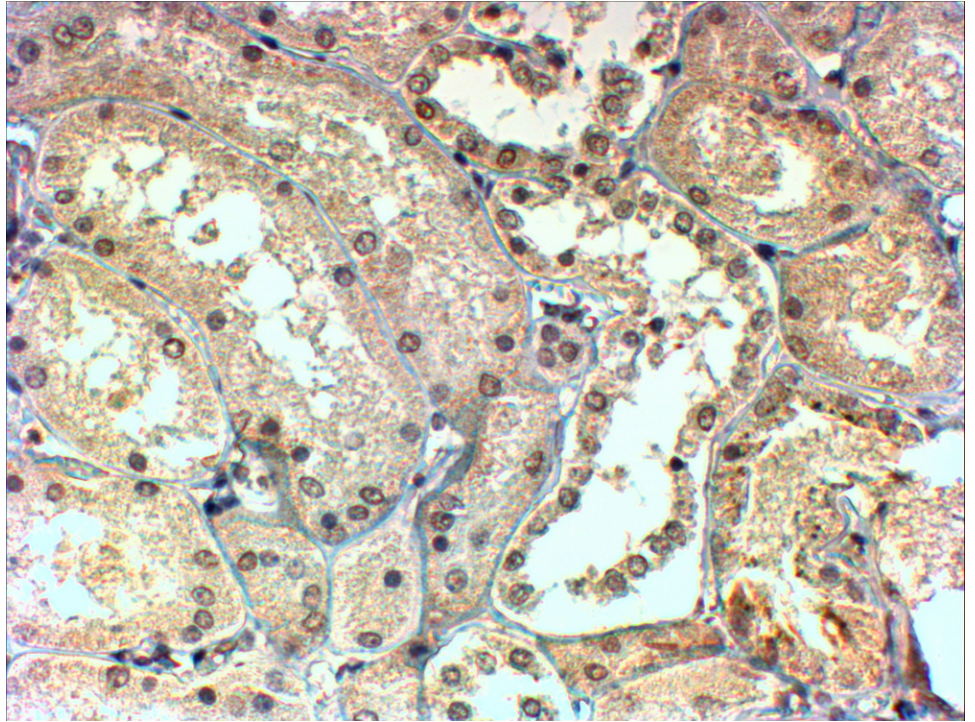
Peptide ELISA: antibody detection limit dilution 1:4000.

IHC: In paraffin embedded Human Kidney shows preferential nuclear staining in the DCT. Recommended concentration, 4-6µg/ml.

Species Reactivity

Tested: Human

Expected from sequence similarity: Human, Mouse, Rat, Dog, Cow



EB05313 (4µg/ml) staining of paraffin embedded Human Kidney. Steamed antigen retrieval with Tris/EDTA buffer pH 9, HRP-staining.