



SZABO SCANDIC

Part of Europa Biosite

Produktinformation



Forschungsprodukte & Biochemikalien



Zellkultur & Verbrauchsmaterial



Diagnostik & molekulare Diagnostik



Laborgeräte & Service

Weitere Information auf den folgenden Seiten!
See the following pages for more information!



Lieferung & Zahlungsart

siehe unsere [Liefer- und Versandbedingungen](#)

Zuschläge

- Mindermengenzuschlag
- Trockeneiszuschlag
- Gefahrgutzuschlag
- Expressversand

SZABO-SCANDIC HandelsgmbH

Quellenstraße 110, A-1100 Wien

T. +43(0)1 489 3961-0

F. +43(0)1 489 3961-7

mail@szabo-scandic.com

www.szabo-scandic.com

[linkedin.com/company/szaboscandic](https://www.linkedin.com/company/szaboscandic) 



UK Office

Everest Biotech Ltd

Cherwell Innovation Centre
77 Heyford Park
Upper Heyford
Oxfordshire
OX25 5HD
UK

Enquiries:

info@everestbiotech.com

Sales:

sales@everestbiotech.com

Tech support:

support@everestbiotech.com

Tel: +44 (0)1869 238326

Fax: +44 (0)1869 238327

US Office

Everest Biotech c/o Abcore

405 Maple Street, Suite A106
Ramona,
CA 92065
USA

Inquiries:

info@everestbiotech.com

Sales:

usasales@everestbiotech.com

Tech support:

support@everestbiotech.com

Tel: 888-320-4628 (toll-free)

Fax: 888-841-9041

www.everestbiotech.com

**Research Use Only. Not for
diagnostic or therapeutic use.**

EB05345 - Goat Anti-APE1 / APEX1 Antibody

Size: 100µg specific antibody in 200µl



Target Protein

Principal Names: APE1, APEX1, APEX, APEX nuclease (multifunctional DNA repair enzyme), APE, APX, APEN, HAP1, REF1, REF-1, AP lyase, AP endonuclease class I, apurinic/apyrimidinic exonuclease, multifunctional DNA repair enzyme, DNA-(apurinic or apyrimidinic site) lyase, apurinic/apyrimidinic (abasic), APEX nuclease 1 endonuclease, deoxyribonuclease (apurinic or apyrimidinic), apurinic/apyrimidinic (abasic) endonuclease, redox factor 1

Official Symbol: APEX1

Accession Number(s): NP_001632.2

Human GeneID(s): [328](#)

Important Comments: Reported variants represent identical protein (NP_001632.2; NP_542379.1; NP_542380.1).

Immunogen

Peptide with sequence PKRGKKGAVAEDGD-C, from the N Terminus of the protein sequence according to NP_001632.2.

Please note the [peptide](#) is available for sale.

Purification and Storage

Purified from goat serum by ammonium sulphate precipitation followed by antigen affinity chromatography using the immunizing peptide.

Supplied at 0.5 mg/ml in Tris saline, 0.02% sodium azide, pH7.3 with 0.5% bovine serum albumin.

Aliquot and store at -20°C. Minimize freezing and thawing.

Applications Tested

Peptide ELISA: antibody detection limit dilution 1:16000.

Western blot: Approx 37kDa band observed in nuclear lysates of cell lines A431, HeLa and MCF7 (calculated MW of 35.6kDa according to NP_001632.2, NP_542379.1 and NP_542380.1). Recommended concentration: 0.1-0.3µg/ml.

IHC: In paraffin embedded Human Breast shows nuclear staining of lobular epithelial cells. Recommended concentration: 4-6µg/ml.

Additional validation: This antibody has been successfully used in the following paper: Sikorski et al. (2018) PMID: 30377371.

Species Reactivity

Tested: Human

Expected from sequence similarity: Human, Dog, Pig, Cow

Specific Reference

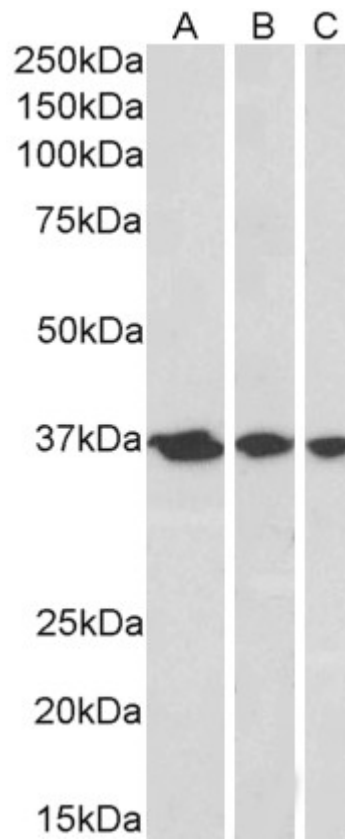
This antibody has been successfully used in the following paper:

Krzysztof Sikorski, Adi Mehta, Marit Inngjerdingen, Flourina Thakor, Simon Kling, Tomas Kalina, Tuula A. Nyman, Maria Ekman Stensland, Wei Zhou, Gustavo A. De Souza, Lars Holden, Jan Stuchly, Markus Templin and Fridtjof Lund-Johansen

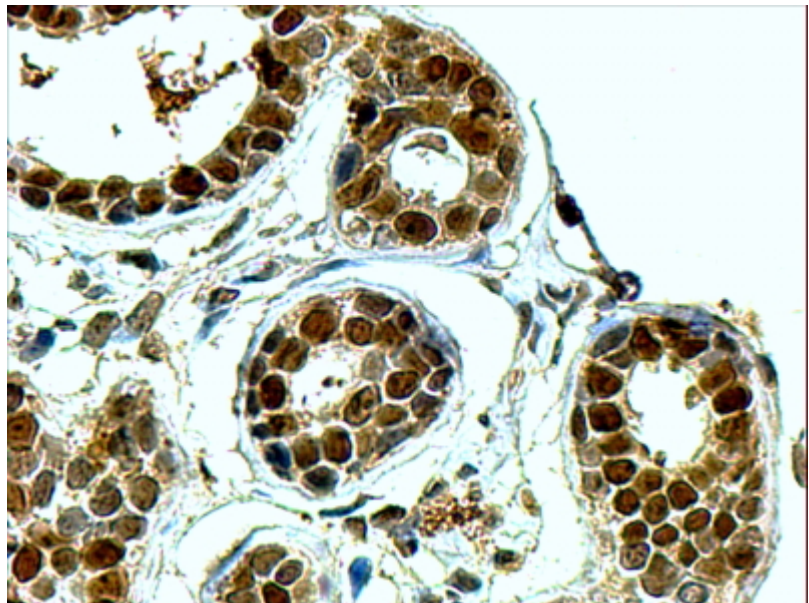
A high-throughput pipeline for validation of antibodies

Nat Methods. 2018 Nov;15(11):909-912

PMID: 30377371



EB05345 (0.3 μ g/ml) staining of A431 (A), HeLa (B) and MCF7 (C) nuclear lysates (35 μ g protein in RIPA buffer). Primary incubation was 1 hour. Detected by chemiluminescence.



EB05345 (4 μ g/ml) staining of paraffin embedded Human Breast. Steamed antigen retrieval with Tris/EDTA buffer pH 9, HRP-staining.