



# SZABO SCANDIC

Part of Europa Biosite

## Produktinformation



Forschungsprodukte & Biochemikalien



Zellkultur & Verbrauchsmaterial



Diagnostik & molekulare Diagnostik



Laborgeräte & Service

Weitere Information auf den folgenden Seiten!  
See the following pages for more information!



### Lieferung & Zahlungsart

siehe unsere [Liefer- und Versandbedingungen](#)

### Zuschläge

- Mindermengenzuschlag
- Trockeneiszuschlag
- Gefahrgutzuschlag
- Expressversand

### SZABO-SCANDIC HandelsgmbH

Quellenstraße 110, A-1100 Wien

T. +43(0)1 489 3961-0

F. +43(0)1 489 3961-7

[mail@szabo-scandic.com](mailto:mail@szabo-scandic.com)

[www.szabo-scandic.com](http://www.szabo-scandic.com)

[linkedin.com/company/szaboscandic](https://www.linkedin.com/company/szaboscandic) 

## UK Office

### Everest Biotech Ltd

Cherwell Innovation Centre  
77 Heyford Park  
Upper Heyford  
Oxfordshire  
OX25 5HD  
UK

Enquiries:

[info@everestbiotech.com](mailto:info@everestbiotech.com)

Sales:

[sales@everestbiotech.com](mailto:sales@everestbiotech.com)

Tech support:

[support@everestbiotech.com](mailto:support@everestbiotech.com)

Tel: +44 (0)1869 238326

Fax: +44 (0)1869 238327

## US Office

### Everest Biotech c/o Abcore

405 Maple Street, Suite A106  
Ramona,  
CA 92065  
USA

Inquiries:

[info@everestbiotech.com](mailto:info@everestbiotech.com)

Sales:

[usasales@everestbiotech.com](mailto:usasales@everestbiotech.com)

Tech support:

[support@everestbiotech.com](mailto:support@everestbiotech.com)

Tel: 888-320-4628 (toll-free)

Fax: 888-841-9041

[www.everestbiotech.com](http://www.everestbiotech.com)

**Research Use Only. Not for  
diagnostic or therapeutic use.**

## EB05356 - Goat Anti-SCAP2 / PRAP Antibody

Size: 100µg specific antibody in 200µl



### Target Protein

**Principal Names:** SKAP2, SCAP2, PRAP, src family associated phosphoprotein 2, MGC10411, MGC33304, RA70, SAPS, SCAP2, SKAP-HOM, SKAP55R, Fyn-associated phosphoprotein SKAP55 homologue, Pyk2/RAFTK-associated protein, src family associated phosphoprotein 2, src kinase-associated phosphoprotein of 55-related protein, src-associated adaptor protein

**Official Symbol:** SKAP2

**Accession Number(s):** NP\_003921.2

**Human GeneID(s):** [8935](#)

### Immunogen

Peptide with sequence C-GLVPKAYIMEMYDI, from the C Terminus of the protein sequence according to NP\_003921.2.

Please note the [peptide](#) is available for sale.

### Purification and Storage

Purified from goat serum by ammonium sulphate precipitation followed by antigen affinity chromatography using the immunizing peptide.

Supplied at 0.5 mg/ml in Tris saline, 0.02% sodium azide, pH7.3 with 0.5% bovine serum albumin.

Aliquot and store at -20°C. Minimize freezing and thawing.

### Applications Tested

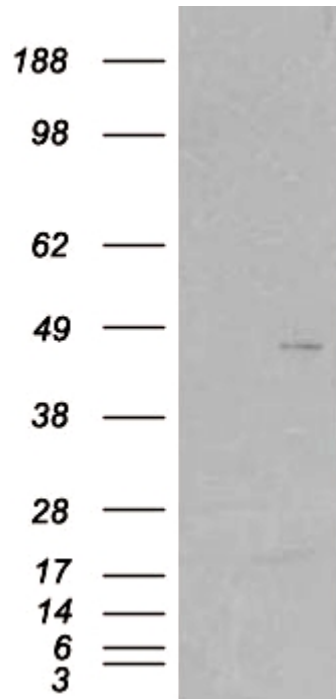
**Peptide ELISA:** antibody detection limit dilution 1:32000.

**Western blot:** Approx 38kDa band observed in lysates of cell line Jurkat (calculated MW of 41.2kDa according to NP\_003921.2). In transfected HEK293 transiently expressing SKAP2 a band of approx. 45kDa is observed. This band is not observed in the non-transfected HEK293. The calculated Recommended concentration: 0.5-2µg/ml. An additional band of unknown identity was also consistently observed in Jurkat at 28kDa. This band was successfully blocked by incubation with the immunising peptide. We would appreciate any feedback from people in the field - have any such results been reported with other antibodies/lysates? Have any further splice variants/modified forms been reported?

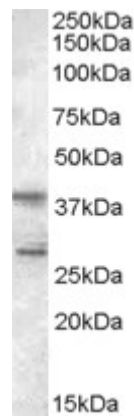
### Species Reactivity

**Tested:** Human

**Expected from sequence similarity:** Human, Mouse, Rat, Dog, Cow



HEK293 overexpressing SKAP2 (RC206119) and probed with EB05356 (mock transfection in first lane), tested by Origene.



EB05356 (0.5 $\mu$ g/ml) staining of Jurkat lysate (35 $\mu$ g protein in RIPA buffer). Primary incubation was 1 hour. Detected by chemiluminescence.