



SZABO SCANDIC

Part of Europa Biosite

Produktinformation



Forschungsprodukte & Biochemikalien



Zellkultur & Verbrauchsmaterial



Diagnostik & molekulare Diagnostik



Laborgeräte & Service

Weitere Information auf den folgenden Seiten!
See the following pages for more information!



Lieferung & Zahlungsart

siehe unsere [Liefer- und Versandbedingungen](#)

Zuschläge

- Mindermengenzuschlag
- Trockeneiszuschlag
- Gefahrgutzuschlag
- Expressversand

SZABO-SCANDIC HandelsgmbH

Quellenstraße 110, A-1100 Wien

T. +43(0)1 489 3961-0

F. +43(0)1 489 3961-7

mail@szabo-scandic.com

www.szabo-scandic.com

[linkedin.com/company/szaboscandic](https://www.linkedin.com/company/szaboscandic) 



UK Office

Everest Biotech Ltd

Cherwell Innovation Centre
77 Heyford Park
Upper Heyford
Oxfordshire
OX25 5HD
UK

Enquiries:

info@everestbiotech.com

Sales:

sales@everestbiotech.com

Tech support:

support@everestbiotech.com

Tel: +44 (0)1869 238326

Fax: +44 (0)1869 238327

US Office

Everest Biotech c/o Abcore

405 Maple Street, Suite A106
Ramona,
CA 92065
USA

Inquiries:

info@everestbiotech.com

Sales:

usasales@everestbiotech.com

Tech support:

support@everestbiotech.com

Tel: 888-320-4628 (toll-free)

Fax: 888-841-9041

www.everestbiotech.com

**Research Use Only. Not for
diagnostic or therapeutic use.**

EB05393 - Goat Anti-AIBZIP / CREB3L4 Antibody

Size: 100µg specific antibody in 200µl



Target Protein

Principal Names: AIBZIP, cAMP responsive element binding protein 3-like 4, JAL, hJAL, ATCE1, CREB3, CREB4, androgen-induced basic leucine zipper, RP11-422P24.8, OTTHUMP00000035266, cAMP responsive element binding protein 1

Official Symbol: CREB3L4

Accession Number(s): NP_570968.1; NP_001242909.1

Human GeneID(s): [148327](#)

Important Comments: This antibody is expected to recognize both reported isoforms (NP_570968.1; NP_001242909.1). Reported variants represent identical protein: NP_001242908.1, NP_570968.1, NP_001242907.1 Reported variants represent identical protein: NP_001242909.1, NP_001242910.1

Immunogen

Peptide with sequence C-PSGRIRSVLHADEM, from the C Terminus of the protein sequence according to NP_570968.1; NP_001242909.1.

Please note the [peptide](#) is available for sale.

Purification and Storage

Purified from goat serum by ammonium sulphate precipitation followed by antigen affinity chromatography using the immunizing peptide.

Supplied at 0.5 mg/ml in Tris saline, 0.02% sodium azide, pH7.3 with 0.5% bovine serum albumin.

Aliquot and store at -20°C. Minimize freezing and thawing.

Applications Tested

Peptide ELISA: antibody detection limit dilution 1:32000.

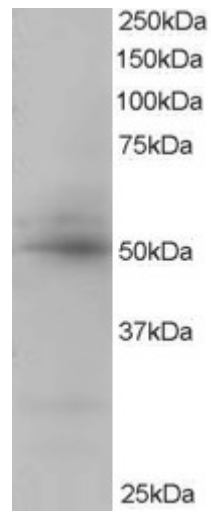
Western blot: Approx 50kDa band observed in Human Placenta lysate (calculated MW of 43.4kDa according to NP_570968.1). The observed molecular weight corresponds to the glycosylated form. Recommended for use at 0.5-2µg/ml.

IHC: In paraffin embedded Human Prostate shows strong staining of cytoplasm in the secretory cells of the gland. Recommended concentration, 2-4µg/ml.

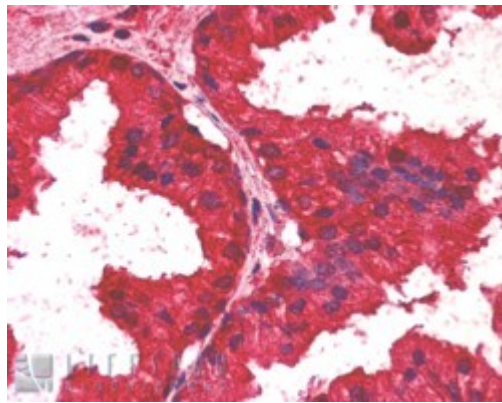
Species Reactivity

Tested: Human

Expected from sequence similarity: Human



EB05393 staining (0.5 μ g/ml) of Human Placenta lysate (RIPA buffer, 35 μ g total protein per lane). Primary incubated for 1 hour. Detected by western blot using chemiluminescence.



EB05393 (2.5 μ g/ml) staining of paraffin embedded Human Prostate. Steamed antigen retrieval with citrate buffer pH 6, AP-staining.