



SZABO SCANDIC

Part of Europa Biosite

Produktinformation



Forschungsprodukte & Biochemikalien



Zellkultur & Verbrauchsmaterial



Diagnostik & molekulare Diagnostik



Laborgeräte & Service

Weitere Information auf den folgenden Seiten!
See the following pages for more information!



Lieferung & Zahlungsart

siehe unsere [Liefer- und Versandbedingungen](#)

Zuschläge

- Mindermengenzuschlag
- Trockeneiszuschlag
- Gefahrgutzuschlag
- Expressversand

SZABO-SCANDIC HandelsgmbH

Quellenstraße 110, A-1100 Wien

T. +43(0)1 489 3961-0

F. +43(0)1 489 3961-7

mail@szabo-scandic.com

www.szabo-scandic.com

[linkedin.com/company/szaboscandic](https://www.linkedin.com/company/szaboscandic) 



UK Office

Everest Biotech Ltd

Cherwell Innovation Centre
77 Heyford Park
Upper Heyford
Oxfordshire
OX25 5HD
UK

Enquiries:

info@everestbiotech.com

Sales:

sales@everestbiotech.com

Tech support:

support@everestbiotech.com

Tel: +44 (0)1869 238326

Fax: +44 (0)1869 238327

US Office

Everest Biotech c/o Abcore

405 Maple Street, Suite A106
Ramona,
CA 92065
USA

Inquiries:

info@everestbiotech.com

Sales:

usasales@everestbiotech.com

Tech support:

support@everestbiotech.com

Tel: 888-320-4628 (toll-free)

Fax: 888-841-9041

www.everestbiotech.com

**Research Use Only. Not for
diagnostic or therapeutic use.**

EB05403 - Goat Anti-PEBP1 Antibody

Size: 100µg specific antibody in 200µl



Target Protein

Principal Names: PEBP1, phosphatidylethanolamine binding protein 1, HCNP, PBP, PEBP, RKIP, prostatic binding protein, RAF kinase inhibitor protein, Raf kinase inhibitory protein, hippocampal cholinergic neurostimulating peptide

Official Symbol: PEBP1

Accession Number(s): NP_002558.1

Human GeneID(s): [5037](#)

Non-Human GeneID(s): 23980 (mouse)

Immunogen

Peptide with sequence C-DYVPKLYEQLSGK, from the C Terminus of the protein sequence according to NP_002558.1.

Please note the [peptide](#) is available for sale.

Purification and Storage

Purified from goat serum by ammonium sulphate precipitation followed by antigen affinity chromatography using the immunizing peptide.

Supplied at 0.5 mg/ml in Tris saline, 0.02% sodium azide, pH7.3 with 0.5% bovine serum albumin.

Aliquot and store at -20°C. Minimize freezing and thawing.

Applications Tested

Peptide ELISA: antibody detection limit dilution 1:32000.

Western blot: Approx 20-22kDa band observed in A549, HepG2 and Human Liver lysate (predicted MW of 22kDa according to NP_002558.1). Recommended for use at 0.5-2µg/ml. Primary incubation was 1 hour.

IHC: Paraffin embedded Human Brain (Cortex). Recommended concentration: 5µg/ml.

Species Reactivity

Tested: Human

Expected from sequence similarity: Human, Mouse, Rat, Dog, Cow

Specific Reference

This antibody (previous batch) has been successfully used in Rat in the following paper:

Weitzdörfer R, Höger H, Shim KS, Cekici L, Pollak A, Lubec G.

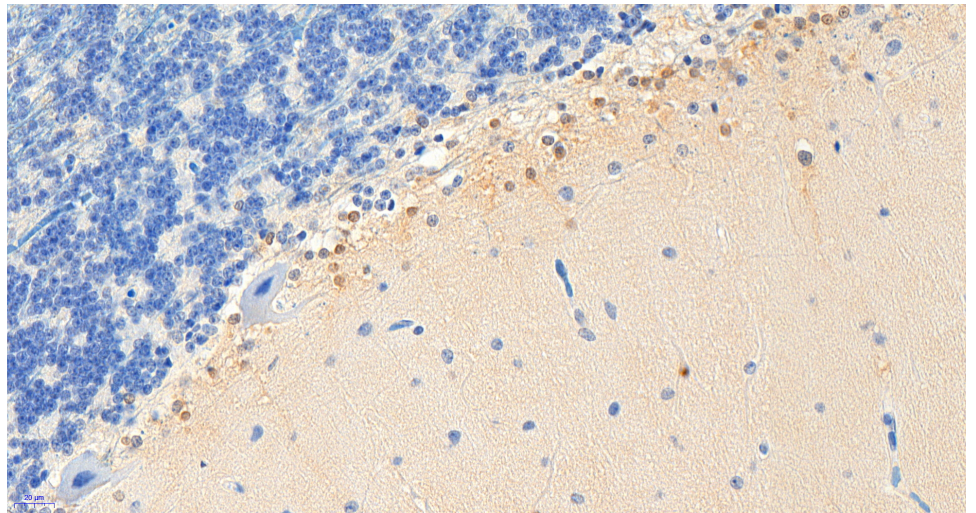
Changes of hippocampal signaling protein levels during postnatal brain development in the rat.

Hippocampus. 2008;18(8):807-13.

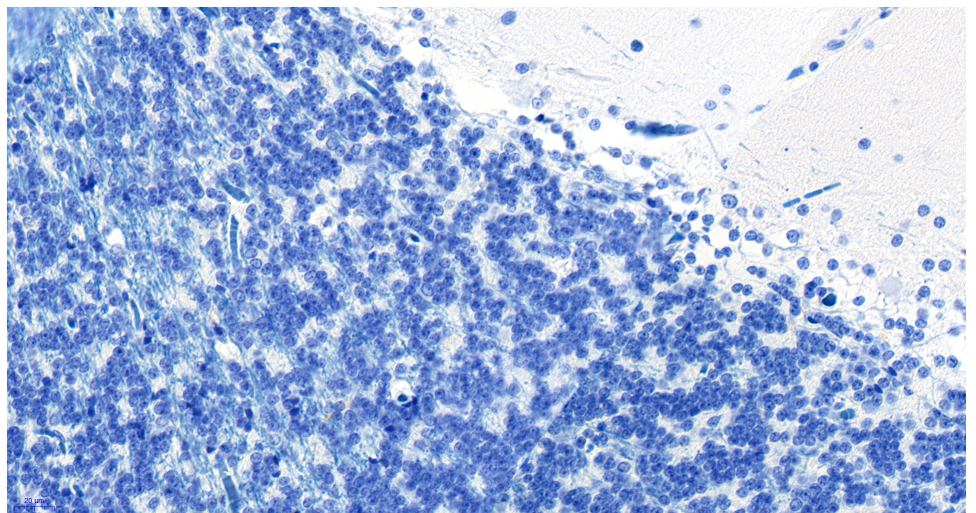
PMID: 18493952



EB05403 (1 μ g/ml) staining of A549 lysate (35 μ g protein in RIPA buffer). Detected by chemiluminescence.



EB05403 (5 μ g/ml) staining of paraffin embedded Human Cortex. Heat induced antigen retrieval with citrate buffer pH 6, HRP-staining.



EB05403 Negative Control showing staining of paraffin embedded Human Cortex, with no primary antibody.