



# SZABO SCANDIC

Part of Europa Biosite

## Produktinformation



Forschungsprodukte & Biochemikalien



Zellkultur & Verbrauchsmaterial



Diagnostik & molekulare Diagnostik



Laborgeräte & Service

Weitere Information auf den folgenden Seiten!  
See the following pages for more information!



### Lieferung & Zahlungsart

siehe unsere [Liefer- und Versandbedingungen](#)

### Zuschläge

- Mindermengenzuschlag
- Trockeneiszuschlag
- Gefahrgutzuschlag
- Expressversand

### SZABO-SCANDIC HandelsgmbH

Quellenstraße 110, A-1100 Wien

T. +43(0)1 489 3961-0

F. +43(0)1 489 3961-7

[mail@szabo-scandic.com](mailto:mail@szabo-scandic.com)

[www.szabo-scandic.com](http://www.szabo-scandic.com)

[linkedin.com/company/szaboscandic](https://www.linkedin.com/company/szaboscandic) 



## UK Office

### Everest Biotech Ltd

Cherwell Innovation Centre  
77 Heyford Park  
Upper Heyford  
Oxfordshire  
OX25 5HD  
UK

Enquiries:

[info@everestbiotech.com](mailto:info@everestbiotech.com)

Sales:

[sales@everestbiotech.com](mailto:sales@everestbiotech.com)

Tech support:

[support@everestbiotech.com](mailto:support@everestbiotech.com)

Tel: +44 (0)1869 238326

Fax: +44 (0)1869 238327

## US Office

### Everest Biotech c/o Abcore

405 Maple Street, Suite A106  
Ramona,  
CA 92065  
USA

Inquiries:

[info@everestbiotech.com](mailto:info@everestbiotech.com)

Sales:

[usasales@everestbiotech.com](mailto:usasales@everestbiotech.com)

Tech support:

[support@everestbiotech.com](mailto:support@everestbiotech.com)

Tel: 888-320-4628 (toll-free)

Fax: 888-841-9041

[www.everestbiotech.com](http://www.everestbiotech.com)

**Research Use Only. Not for  
diagnostic or therapeutic use.**

## EB05413 - Goat Anti-Septin 3 Antibody

Size: 100µg specific antibody in 200µl



### Target Protein

**Principal Names:** SEPT3, septin 3, SEP3, CTA-250D10.3, MGC133218, bK250D10.3, OTTHUMP00000028742, neuronal-specific septin 3, G-Septin

**Official Symbol:** SEPT3

**Accession Number(s):** NP\_663786.2; NP\_061979.3

**Human GeneID(s):** [55964](#)

**Non-Human GeneID(s):** 24050 (mouse)

**Important Comments:** This antibody is expected to recognize both reported isoforms according to NP\_663786.2 and NP\_061979.3.

### Immunogen

Peptide with sequence SELVPEPRPKPA-C, from the N Terminus of the protein sequence according to NP\_663786.2; NP\_061979.3.

Please note the [peptide](#) is available for sale.

### Purification and Storage

Purified from goat serum by ammonium sulphate precipitation followed by antigen affinity chromatography using the immunizing peptide.

Supplied at 0.5 mg/ml in Tris saline, 0.02% sodium azide, pH7.3 with 0.5% bovine serum albumin.

Aliquot and store at -20°C. Minimize freezing and thawing.

### Applications Tested

**Peptide ELISA:** antibody detection limit dilution 1:32000.

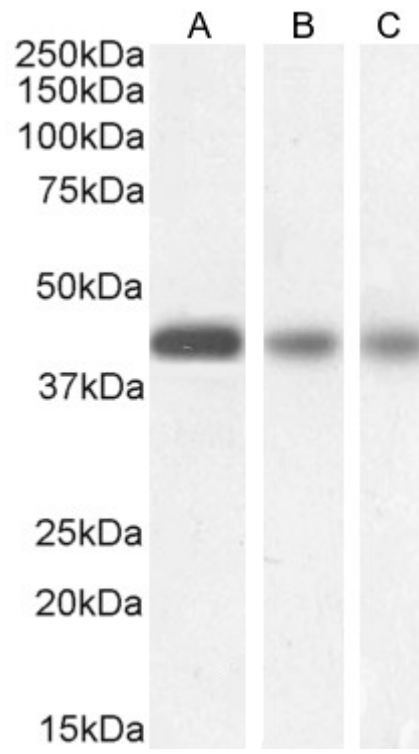
**Western blot:** Approx 40kDa band observed in Human Cerebellum and in Mouse and Rat Brain lysates (calculated MW of 40.7kDa according to Human NP\_663786.2 and Rat NP\_062248.2, and 40.6kDa according to Mouse NP\_001345765.1). Recommended concentration: 0.03-0.5µg/ml. Primary incubation 1 hour at room temperature

**IHC:** Paraffin embedded Human Brain (Cortex) and (Cerebellum) and Testis. Recommended concentration: 3.75µg/ml.

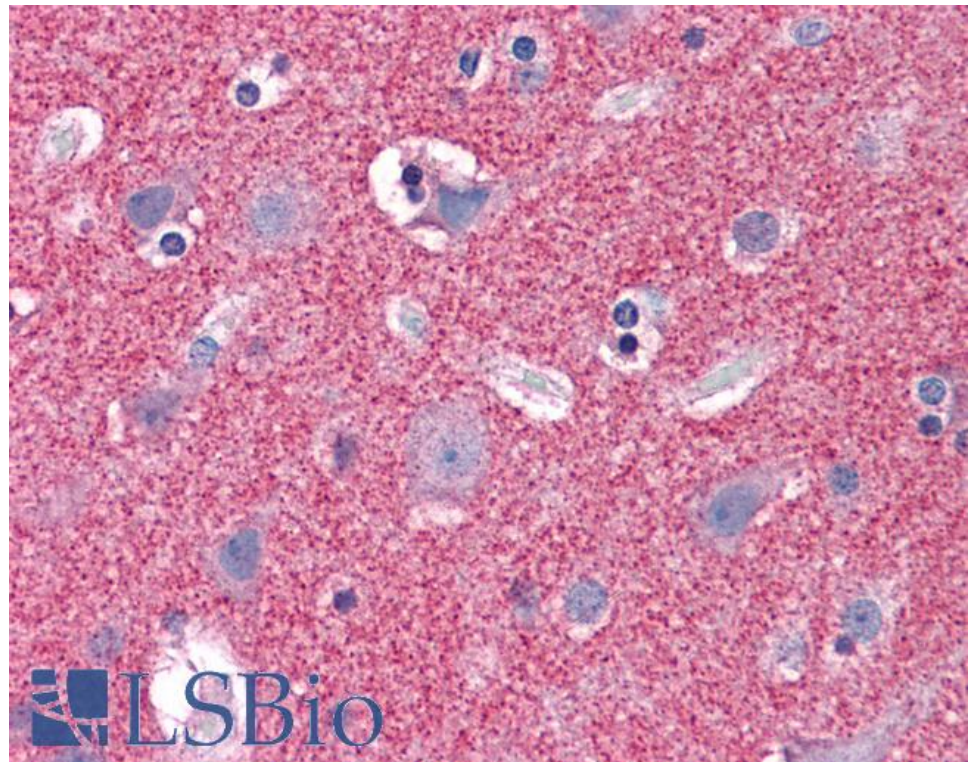
### Species Reactivity

**Tested:** Human, Mouse, Rat

**Expected from sequence similarity:** Human, Mouse, Rat, Dog, Pig, Cow

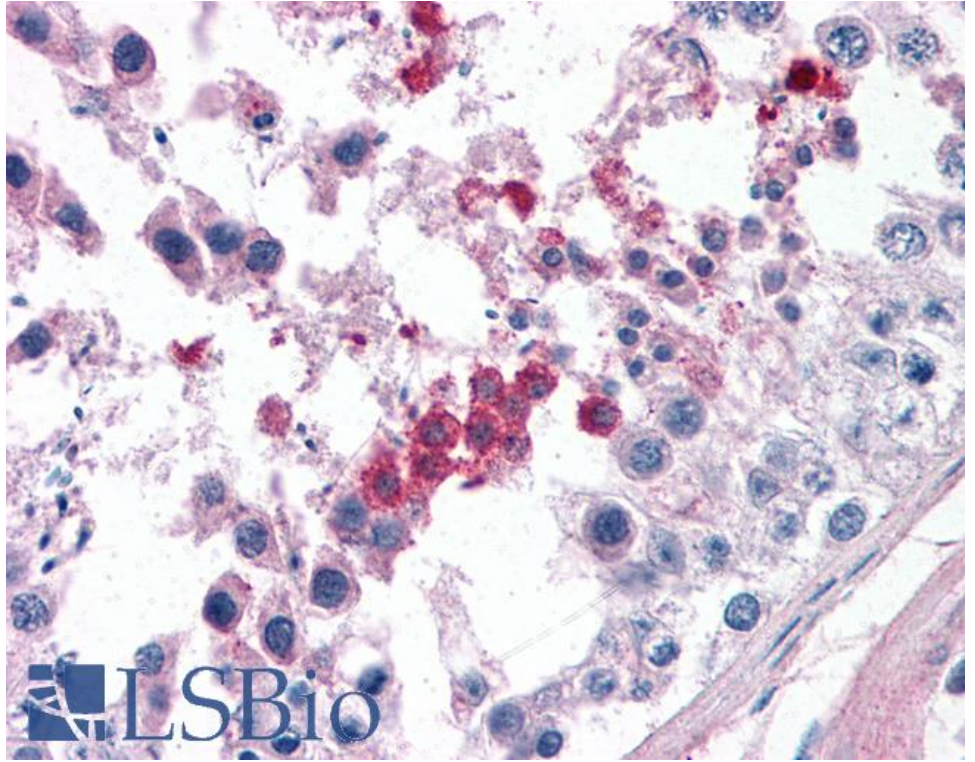


EB05413 (0.5 $\mu$ g/ml) staining of Human Cerebellum (A), (0.1 $\mu$ g/ml) Mouse (B) and (0.03 $\mu$ g/ml) Rat (C) Brain lysate (35 $\mu$ g protein in RIPA buffer).. Detected by chemiluminescence.

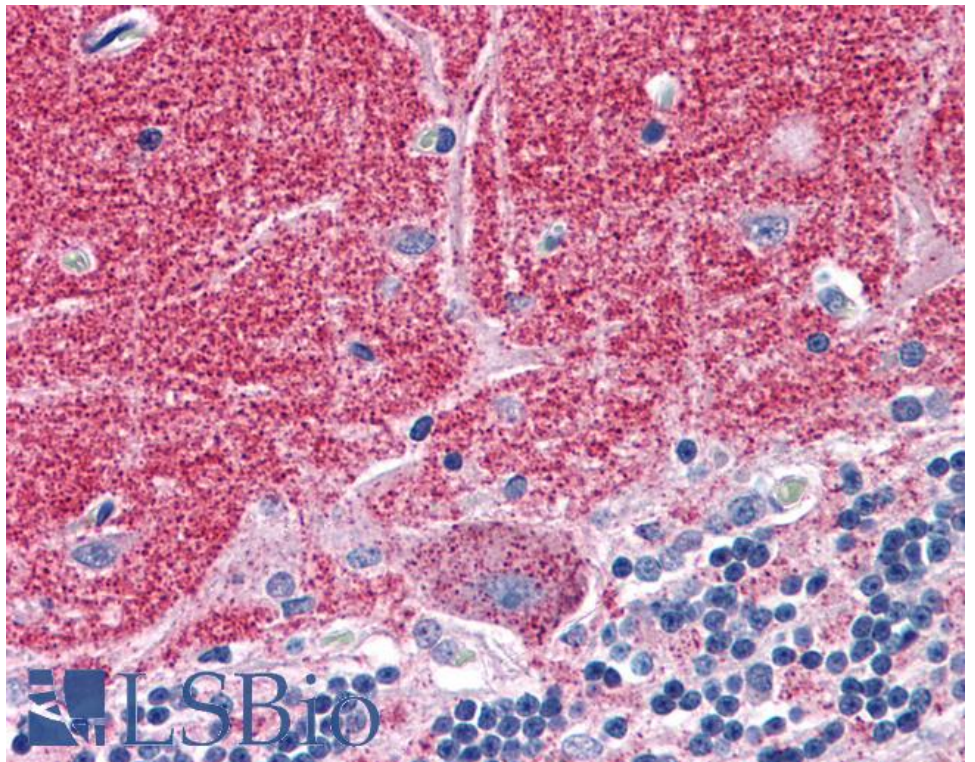


EB05413 (3.75 $\mu$ g/ml) staining of paraffin embedded Human Cortex. Steamed antigen retrieval with citrate buffer pH 6, AP-staining.





EB05413 (3.75µg/ml) staining of paraffin embedded Human Testis. Steamed antigen retrieval with citrate buffer pH 6, AP-staining.



EB05413 (3.75µg/ml) staining of paraffin embedded Human Cerebellum. Steamed antigen retrieval with citrate buffer pH 6, AP-staining.