



SZABO SCANDIC

Part of Europa Biosite

Produktinformation



Forschungsprodukte & Biochemikalien



Zellkultur & Verbrauchsmaterial



Diagnostik & molekulare Diagnostik



Laborgeräte & Service

Weitere Information auf den folgenden Seiten!
See the following pages for more information!



Lieferung & Zahlungsart

siehe unsere [Liefer- und Versandbedingungen](#)

Zuschläge

- Mindermengenzuschlag
- Trockeneiszuschlag
- Gefahrgutzuschlag
- Expressversand

SZABO-SCANDIC HandelsgmbH

Quellenstraße 110, A-1100 Wien

T. +43(0)1 489 3961-0

F. +43(0)1 489 3961-7

mail@szabo-scandic.com

www.szabo-scandic.com

[linkedin.com/company/szaboscandic](https://www.linkedin.com/company/szaboscandic) 



UK Office

Everest Biotech Ltd

Cherwell Innovation Centre
77 Heyford Park
Upper Heyford
Oxfordshire
OX25 5HD
UK

Enquiries:

info@everestbiotech.com

Sales:

sales@everestbiotech.com

Tech support:

support@everestbiotech.com

Tel: +44 (0)1869 238326

Fax: +44 (0)1869 238327

US Office

Everest Biotech c/o Abcore

405 Maple Street, Suite A106
Ramona,
CA 92065
USA

Inquiries:

info@everestbiotech.com

Sales:

usasales@everestbiotech.com

Tech support:

support@everestbiotech.com

Tel: 888-320-4628 (toll-free)

Fax: 888-841-9041

www.everestbiotech.com

**Research Use Only. Not for
diagnostic or therapeutic use.**

EB05488 - Goat Anti-CPT1B (isoform 1) Antibody

Size: 100µg specific antibody in 200µl



Target Protein

Principal Names: CPT1B, carnitine palmitoyltransferase I, muscle, carnitine palmitoyltransferase 1B (muscle), CPT1-M, M-CPT1, KIAA1670, CPTI, muscle, carnitine O-palmitoyltransferase I, mitochondrial muscle isoform, carnitine palmitoyltransferase 1A (muscle), carnitine palmitoyltransferase 1B, carnitine palmitoyltransferase 1B (muscle), CPT1M, FLJ55729, FLJ58750, MCCPT1, MCPT1, carnitine palmitoyltransferase I-like

Official Symbol: CPT1B

Accession Number(s): NP_689452.1; NP_689451.1; NP_004368.1; NP_001138609.1; NP_001138607.1; NP_001138606.1; NP_001138608.1

Human GeneID(s): [1375](#)

Important Comments: This antibody is expected to recognise human isoforms a (NP_689452.1; NP_689451.1; NP_004368.1; NP_001138609.1; NP_001138607.1), isoform c (NP_001138606.1) and isoform d (NP_001138608.1).

Immunogen

Peptide with sequence C-DIADLFQVPKAYS, from the C Terminus of the protein sequence according to NP_689452.1; NP_689451.1; NP_004368.1; NP_001138609.1; NP_001138607.1; NP_001138606.1; NP_001138608.1.

Please note the [peptide](#) is available for sale.

Purification and Storage

Purified from goat serum by ammonium sulphate precipitation followed by antigen affinity chromatography using the immunizing peptide.

Supplied at 0.5 mg/ml in Tris saline, 0.02% sodium azide, pH7.3 with 0.5% bovine serum albumin.

Aliquot and store at -20°C. Minimize freezing and thawing.

Applications Tested

Peptide ELISA: antibody detection limit dilution 1:16000.

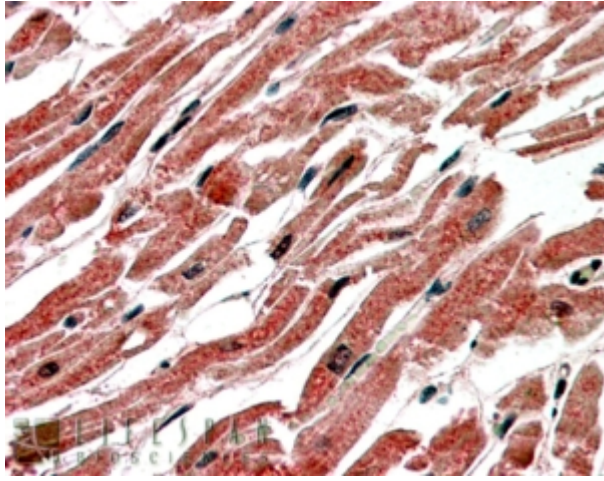
Western blot: Preliminary experiments gave no signal but low background in human kidney and HepG2 lysates at up to 1µg/ml. We would appreciate any feedback from people in the field - have any results been reported with other antibodies/lysates?

IHC: In paraffin embedded Human Heart shows staining of myocardial fibres in longitudinal section. Recommended concentration, 3-5µg/ml.

Species Reactivity

Tested: Human

Expected from sequence similarity: Human



EB05488 (3.8 μ g/ml) staining of paraffin embedded Human Heart. Steamed antigen retrieval with citrate buffer pH 6, AP-staining.