



SZABO SCANDIC

Part of Europa Biosite

Produktinformation



Forschungsprodukte & Biochemikalien



Zellkultur & Verbrauchsmaterial



Diagnostik & molekulare Diagnostik



Laborgeräte & Service

Weitere Information auf den folgenden Seiten!
See the following pages for more information!



Lieferung & Zahlungsart

siehe unsere [Liefer- und Versandbedingungen](#)

Zuschläge

- Mindermengenzuschlag
- Trockeneiszuschlag
- Gefahrgutzuschlag
- Expressversand

SZABO-SCANDIC HandelsgmbH

Quellenstraße 110, A-1100 Wien

T. +43(0)1 489 3961-0

F. +43(0)1 489 3961-7

mail@szabo-scandic.com

www.szabo-scandic.com

[linkedin.com/company/szaboscandic](https://www.linkedin.com/company/szaboscandic) 



UK Office

Everest Biotech Ltd

Cherwell Innovation Centre
77 Heyford Park
Upper Heyford
Oxfordshire
OX25 5HD
UK

Enquiries:

info@everestbiotech.com

Sales:

sales@everestbiotech.com

Tech support:

support@everestbiotech.com

Tel: +44 (0)1869 238326

Fax: +44 (0)1869 238327

US Office

Everest Biotech c/o Abcore

405 Maple Street, Suite A106
Ramona,
CA 92065
USA

Inquiries:

info@everestbiotech.com

Sales:

usasales@everestbiotech.com

Tech support:

support@everestbiotech.com

Tel: 888-320-4628 (toll-free)

Fax: 888-841-9041

www.everestbiotech.com

**Research Use Only. Not for
diagnostic or therapeutic use.**

EB05513 - Goat Anti-PAX8 (N Terminus) Antibody

Size: 100µg specific antibody in 200µl



Target Protein

Principal Names: PAX8, paired box gene 8, paired domain gene 8, paired box 8

Official Symbol: PAX8

Accession Number(s): NP_003457.1; NP_039245.1; NP_039246.1; NP_039247.1;
NP_054698.1

Human GeneID(s): [7849](#)

Non-Human GeneID(s): 18510 (mouse), 81819 (rat)

Important Comments: This antibody is expected to recognise all five human isoforms (as represented by NP_003457.1; NP_039245.1; NP_039246.1; NP_039247.1; NP_054698.1)

Immunogen

Peptide with sequence PHNSIRSGHGGLN-C, from the N Terminus of the protein sequence according to NP_003457.1; NP_039245.1; NP_039246.1; NP_039247.1; NP_054698.1.

Please note the [peptide](#) is available for sale.

Purification and Storage

Purified from goat serum by ammonium sulphate precipitation followed by antigen affinity chromatography using the immunizing peptide.

Supplied at 0.5 mg/ml in Tris saline, 0.02% sodium azide, pH7.3 with 0.5% bovine serum albumin.

Aliquot and store at -20°C. Minimize freezing and thawing.

Applications Tested

Peptide ELISA: antibody detection limit dilution 1:128000.

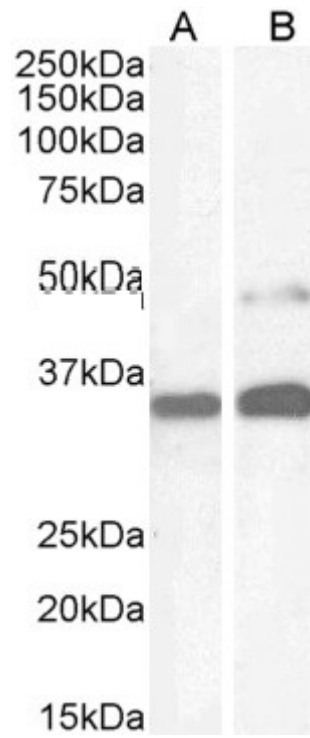
Western blot: Approx 35kDa band observed in Human Kidney lysates. An additional 48kDa was also observed in some Kidney and HeLa cell lysates (calculated MW of 34.9kDa according to Human NP_039247.1 PAX8D and 48.2kDa according to Human NP_003457.1 PAXA). Recommended concentration: 1-2µg/ml. Primary incubation 1 hour at room temperature. Preliminary testing was unsuccessful on Mouse and Rat Liver, and NIH3T3 for this particular batch.

IHC: Paraffin embedded Human Kidney Cortex. Recommended concentration: 5µg/ml.

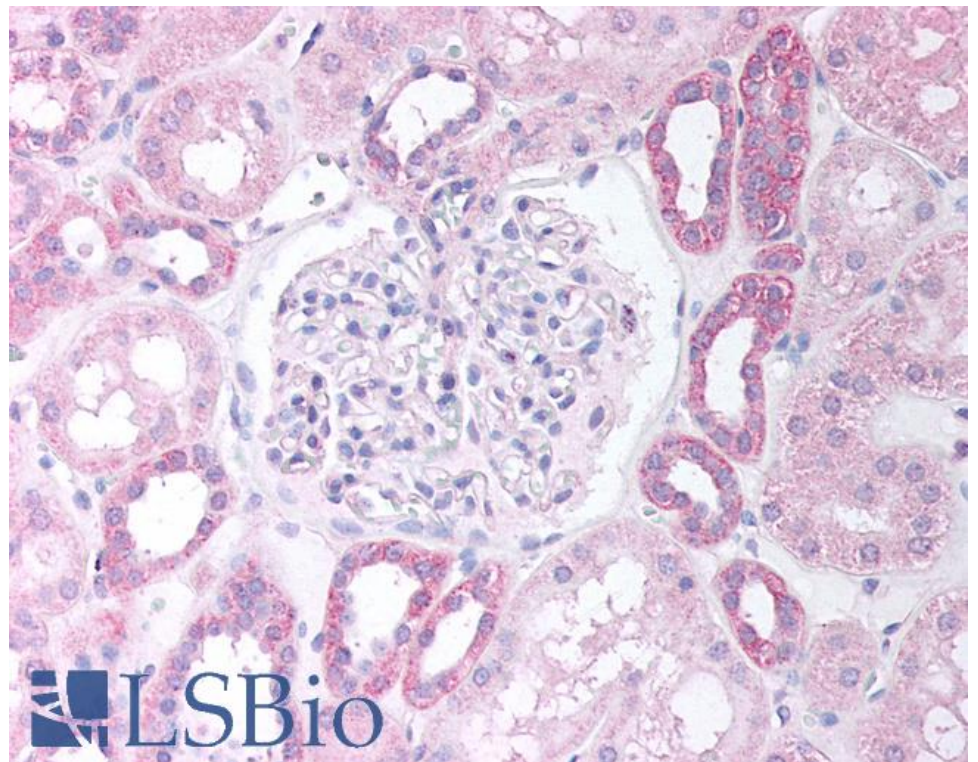
Species Reactivity

Tested: Human

Expected from sequence similarity: Human, Mouse, Rat



EB05513 (1 μ g/ml) staining of Human Kidney (A) and HeLa cell (B) lysate (35 μ g protein in RIPA buffer). Detected by chemiluminescence.



EB05513 (5 μ g/ml) staining of paraffin embedded Human Kidney Cortex. Steamed antigen retrieval with citrate buffer pH 6, AP-staining.