



SZABO SCANDIC

Part of Europa Biosite

Produktinformation



Forschungsprodukte & Biochemikalien



Zellkultur & Verbrauchsmaterial



Diagnostik & molekulare Diagnostik



Laborgeräte & Service

Weitere Information auf den folgenden Seiten!
See the following pages for more information!



Lieferung & Zahlungsart

siehe unsere [Liefer- und Versandbedingungen](#)

Zuschläge

- Mindermengenzuschlag
- Trockeneiszuschlag
- Gefahrgutzuschlag
- Expressversand

SZABO-SCANDIC HandelsgmbH

Quellenstraße 110, A-1100 Wien

T. +43(0)1 489 3961-0

F. +43(0)1 489 3961-7

mail@szabo-scandic.com

www.szabo-scandic.com

[linkedin.com/company/szaboscandic](https://www.linkedin.com/company/szaboscandic) 



UK Office

Everest Biotech Ltd

Cherwell Innovation Centre
77 Heyford Park
Upper Heyford
Oxfordshire
OX25 5HD
UK

Enquiries:

info@everestbiotech.com

Sales:

sales@everestbiotech.com

Tech support:

support@everestbiotech.com

Tel: +44 (0)1869 238326

Fax: +44 (0)1869 238327

US Office

Everest Biotech c/o Abcore

405 Maple Street, Suite A106
Ramona,
CA 92065
USA

Inquiries:

info@everestbiotech.com

Sales:

usasales@everestbiotech.com

Tech support:

support@everestbiotech.com

Tel: 888-320-4628 (toll-free)

Fax: 888-841-9041

www.everestbiotech.com

**Research Use Only. Not for
diagnostic or therapeutic use.**

EB05563 - Goat Anti-CAPE Antibody

Size: 100µg specific antibody in 200µl



Target Protein

Principal Names: SMC2, structural maintenance of chromosomes 2, PRO0324, CAP-E, CAPE, FLJ10093, SMC2L1, hCAP-E, OTTHUMP00000021818, OTTHUMP00000021819, SMC protein 2, SMC-2, SMC2 (structural maintenance of chromosomes 2, yeast)-like 1, SMC2 structural maintenance of chromosomes 2-like 1, XCAP-E homolog, chromosome-associated protein E, structural maintenance of chromosomes (SMC) family member, chromosome-associated protein E, structural maintenance of chromosomes protein 2

Official Symbol: SMC2

Accession Number(s): NP_006435.2

Human GeneID(s): [10592](#)

Important Comments: Reported variants NP_006435.2, NP_001036015.1 and NP_001036016.1 represent identical protein

Immunogen

Peptide with sequence C-SKAKPPKGAHVEV, from the C Terminus of the protein sequence according to NP_006435.2.

Please note the [peptide](#) is available for sale.

Purification and Storage

Purified from goat serum by ammonium sulphate precipitation followed by antigen affinity chromatography using the immunizing peptide.

Supplied at 0.5 mg/ml in Tris saline, 0.02% sodium azide, pH7.3 with 0.5% bovine serum albumin.

Aliquot and store at -20°C. Minimize freezing and thawing.

Applications Tested

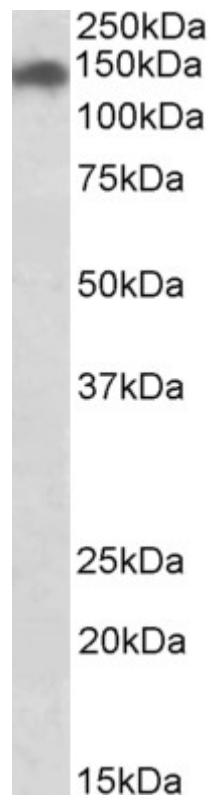
Peptide ELISA: antibody detection limit dilution 1:32000.

Western blot: Approx 140kDa band observed in lysates of cell line HeLa (calculated MW of 136kDa according to NP_006435.2). Recommended concentration: 0.2-0.6µg/ml.

Species Reactivity

Tested: Human

Expected from sequence similarity: Human



EB05563 (0.2 μ g/ml) staining of HeLa lysate (35 μ g protein in RIPA buffer). Primary incubation was 1 hour.
Detected by chemiluminescence.