



SZABO SCANDIC

Part of Europa Biosite

Produktinformation



Forschungsprodukte & Biochemikalien



Zellkultur & Verbrauchsmaterial



Diagnostik & molekulare Diagnostik



Laborgeräte & Service

Weitere Information auf den folgenden Seiten!
See the following pages for more information!



Lieferung & Zahlungsart

siehe unsere [Liefer- und Versandbedingungen](#)

Zuschläge

- Mindermengenzuschlag
- Trockeneiszuschlag
- Gefahrgutzuschlag
- Expressversand

SZABO-SCANDIC HandelsgmbH

Quellenstraße 110, A-1100 Wien

T. +43(0)1 489 3961-0

F. +43(0)1 489 3961-7

mail@szabo-scandic.com

www.szabo-scandic.com

[linkedin.com/company/szaboscandic](https://www.linkedin.com/company/szaboscandic) 



UK Office

Everest Biotech Ltd

Cherwell Innovation Centre
77 Heyford Park
Upper Heyford
Oxfordshire
OX25 5HD
UK

Enquiries:

info@everestbiotech.com

Sales:

sales@everestbiotech.com

Tech support:

support@everestbiotech.com

Tel: +44 (0)1869 238326

Fax: +44 (0)1869 238327

US Office

Everest Biotech c/o Abcore

405 Maple Street, Suite A106
Ramona,
CA 92065
USA

Inquiries:

info@everestbiotech.com

Sales:

usasales@everestbiotech.com

Tech support:

support@everestbiotech.com

Tel: 888-320-4628 (toll-free)

Fax: 888-841-9041

www.everestbiotech.com

**Research Use Only. Not for
diagnostic or therapeutic use.**

EB05677 - Goat Anti-H11 / HSP22 Antibody

Size: 100µg specific antibody in 200µl



Target Protein

Principal Names: HSPB8, heat shock 22kDa protein 8, CMT2L, DHMN2, E2IG1, H11, HMN2, HMN2A, HSP22, Charcot-Marie-Tooth disease, spinal, heat shock 27kDa protein 8, hereditary motor neuropathy, distal, protein kinase H11, small stress protein-like protein HSP22, spinal muscular atrophy, distal, adult, autosomal dominant, E2-induced gene 1, heat shock protein beta-8

Official Symbol: HSPB8

Accession Number(s): NP_055180.1

Human GeneID(s): [26353](#)

Immunogen

Peptide with sequence NELPQDSQEVCT, from the C Terminus of the protein sequence according to NP_055180.1.

Please note the [peptide](#) is available for sale.

Purification and Storage

Purified from goat serum by ammonium sulphate precipitation followed by antigen affinity chromatography using the immunizing peptide.

Supplied at 0.5 mg/ml in Tris saline, 0.02% sodium azide, pH7.3 with 0.5% bovine serum albumin.

Aliquot and store at -20°C. Minimize freezing and thawing.

Applications Tested

Peptide ELISA: antibody detection limit dilution 1:32000.

Western blot: Approx 20-25kDa band seen in Human Skeletal Muscle lysate [Predicted MW of approx. 22kDa according to NP_055180]. Recommended for use at 0.5-1µg/ml.

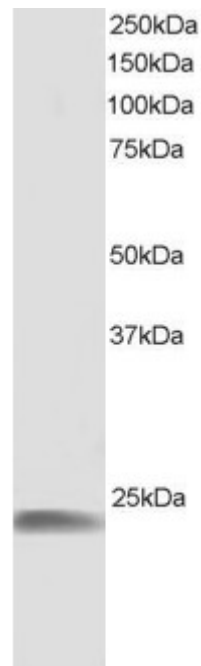
Primary incubated for 1 hour.

IHC: Paraffin embedded Human Adrenal Gland and Tonsil. Recommended concentration: 10µg/ml.

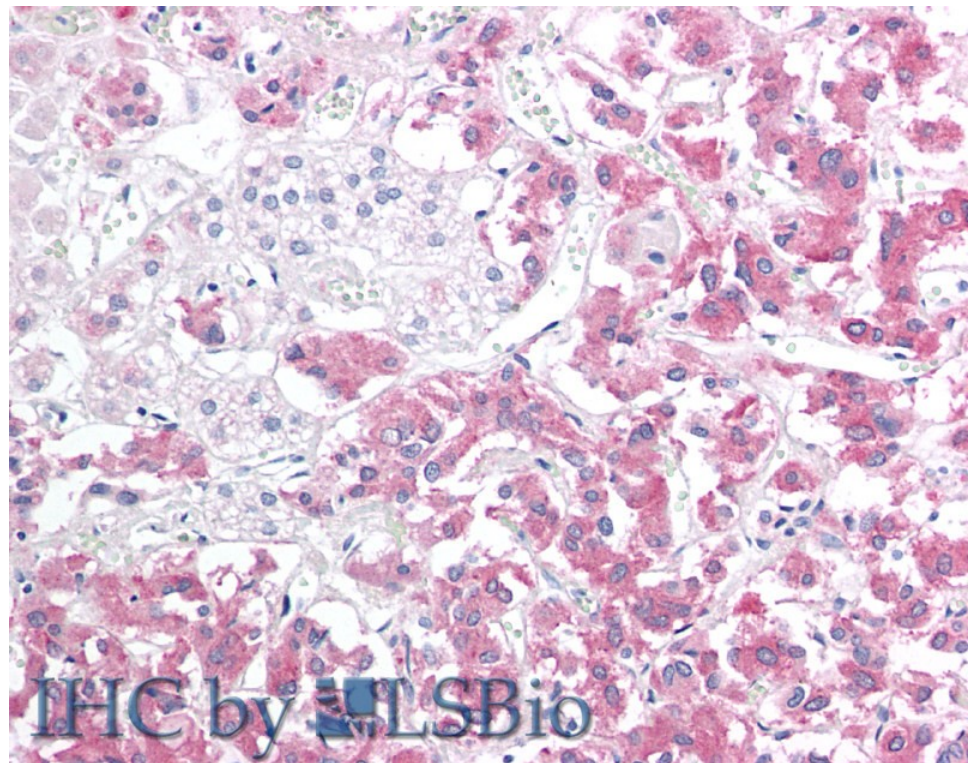
Species Reactivity

Tested: Human

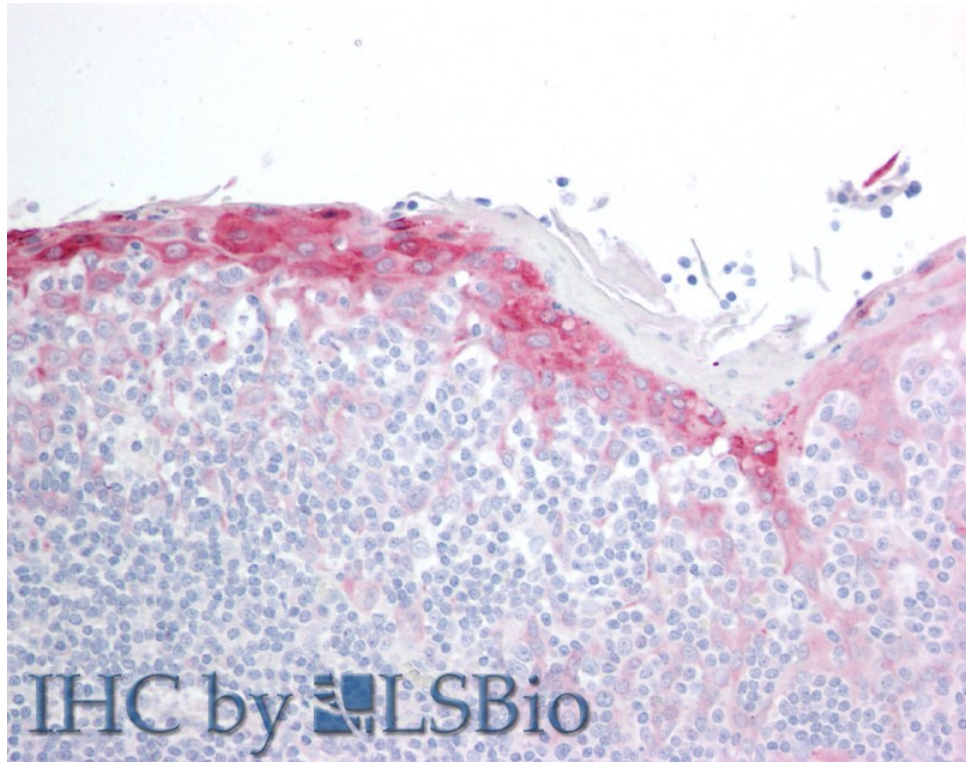
Expected from sequence similarity: Human



EB05677 staining (1 μ g/ml) of Human Muscle lysate (RIPA buffer, 30 μ g total protein per lane). Detected by chemiluminescence.



EB05677 (10 μ g/ml) staining of paraffin embedded Human Adrenal Gland. Steamed antigen retrieval with citrate buffer pH 6, AP-staining.



EB05677 (10 μ g/ml) staining of paraffin embedded Human Tonsil. Steamed antigen retrieval with citrate buffer pH 6, AP-staining.