



SZABO SCANDIC

Part of Europa Biosite

Produktinformation



Forschungsprodukte & Biochemikalien



Zellkultur & Verbrauchsmaterial



Diagnostik & molekulare Diagnostik



Laborgeräte & Service

Weitere Information auf den folgenden Seiten!
See the following pages for more information!



Lieferung & Zahlungsart

siehe unsere [Liefer- und Versandbedingungen](#)

Zuschläge

- Mindermengenzuschlag
- Trockeneiszuschlag
- Gefahrgutzuschlag
- Expressversand

SZABO-SCANDIC HandelsgmbH

Quellenstraße 110, A-1100 Wien

T. +43(0)1 489 3961-0

F. +43(0)1 489 3961-7

mail@szabo-scandic.com

www.szabo-scandic.com

[linkedin.com/company/szaboscandic](https://www.linkedin.com/company/szaboscandic) 



UK Office

Everest Biotech Ltd

Cherwell Innovation Centre
77 Heyford Park
Upper Heyford
Oxfordshire
OX25 5HD
UK

Enquiries:

info@everestbiotech.com

Sales:

sales@everestbiotech.com

Tech support:

support@everestbiotech.com

Tel: +44 (0)1869 238326

Fax: +44 (0)1869 238327

US Office

Everest Biotech c/o Abcore

405 Maple Street, Suite A106
Ramona,
CA 92065
USA

Inquiries:

info@everestbiotech.com

Sales:

usasales@everestbiotech.com

Tech support:

support@everestbiotech.com

Tel: 888-320-4628 (toll-free)

Fax: 888-841-9041

www.everestbiotech.com

**Research Use Only. Not for
diagnostic or therapeutic use.**

EB05735 - Goat Anti-PDIA3 / ERp57 / GRP58 Antibody

Size: 100µg specific antibody in 200µl



Target Protein

Principal Names: PDIA3, GRP58, ERp57, protein disulfide isomerase family A, member 3, ERp60, ERp61, GRP57, HsT17083, P58, PI-PLC, 58 kDa microsomal protein, endoplasmic reticulum P58, glucose regulated protein, 58kDa, phospholipase C-alpha, protein disulfide isomerase-associated 3, ER60, protein disulfide-isomerase A3

Official Symbol: PDIA3

Accession Number(s): NP_005304.3

Human GeneID(s): [2923](#)

Non-Human GeneID(s): 14827 (mouse), 29468 (rat)

Immunogen

Peptide with sequence C-EEKPKKKKKAQEDL, from the C Terminus of the protein sequence according to NP_005304.3.

Please note the [peptide](#) is available for sale.

Purification and Storage

Purified from goat serum by ammonium sulphate precipitation followed by antigen affinity chromatography using the immunizing peptide.

Supplied at 0.5 mg/ml in Tris saline, 0.02% sodium azide, pH7.3 with 0.5% bovine serum albumin.

Aliquot and store at -20°C. Minimize freezing and thawing.

Applications Tested

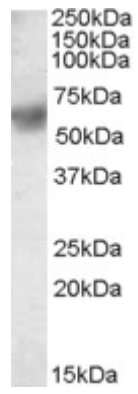
Peptide ELISA: antibody detection limit dilution 1:4000.

Western blot: Approx 60kDa band observed in lysates of cell lines NIH3T3, HepG2 and Daudi (calculated MW of 56.8kDa according to NP_005304.3). Recommended concentration: 0.1-0.3µg/ml. Primary incubation was for 1 hour.

Species Reactivity

Tested: Human, Mouse

Expected from sequence similarity: Human, Mouse, Rat, Cow



EB05735 staining (0.1 μ g/ml) of Daudi lysate (RIPA buffer, 35 μ g total protein per lane). Detected by chemiluminescence.