



SZABO SCANDIC

Part of Europa Biosite

Produktinformation



Forschungsprodukte & Biochemikalien



Zellkultur & Verbrauchsmaterial



Diagnostik & molekulare Diagnostik



Laborgeräte & Service

Weitere Information auf den folgenden Seiten!
See the following pages for more information!



Lieferung & Zahlungsart

siehe unsere [Liefer- und Versandbedingungen](#)

Zuschläge

- Mindermengenzuschlag
- Trockeneiszuschlag
- Gefahrgutzuschlag
- Expressversand

SZABO-SCANDIC HandelsgmbH

Quellenstraße 110, A-1100 Wien

T. +43(0)1 489 3961-0

F. +43(0)1 489 3961-7

mail@szabo-scandic.com

www.szabo-scandic.com

[linkedin.com/company/szaboscandic](https://www.linkedin.com/company/szaboscandic) 



UK Office

Everest Biotech Ltd

Cherwell Innovation Centre
77 Heyford Park
Upper Heyford
Oxfordshire
OX25 5HD
UK

Enquiries:

info@everestbiotech.com

Sales:

sales@everestbiotech.com

Tech support:

support@everestbiotech.com

Tel: +44 (0)1869 238326

Fax: +44 (0)1869 238327

US Office

Everest Biotech c/o Abcore

405 Maple Street, Suite A106
Ramona,
CA 92065
USA

Inquiries:

info@everestbiotech.com

Sales:

usasales@everestbiotech.com

Tech support:

support@everestbiotech.com

Tel: 888-320-4628 (toll-free)

Fax: 888-841-9041

www.everestbiotech.com

**Research Use Only. Not for
diagnostic or therapeutic use.**

EB05759 - Goat Anti-UBE2I Antibody

Size: 100µg specific antibody in 200µl



Target Protein

Principal Names: UBE2I, ubiquitin-conjugating enzyme E2I (UBC9 homolog, yeast), C358B7.1, P18, UBC9, SUMO-1-protein ligase, ubiquitin carrier protein I, ubiquitin conjugating enzyme 9, ubiquitin-conjugating enzyme E2I, ubiquitin-conjugating enzyme E2I (homologous to yeast UBC9), ubiquitin-conjugating enzyme UbcE2A, ubiquitin-like protein SUMO-1 conjugating enzyme, ubiquitin-protein ligase E2I, SUMO-protein ligase, ubiquitin carrier protein 9, ubiquitin-conjugating enzyme E2I (UBC9 homolog, yeast), ubiquitin-protein ligase I

Official Symbol: UBE2I

Accession Number(s): NP_003336.1

Human GeneID(s): [7329](#)

Non-Human GeneID(s): 22196 (mouse), 25573 (rat)

Important Comments: Reported variants represent identical protein: NP_919237.1, NP_003336.1, NP_919236.1, NP_919235.1

Immunogen

Peptide with sequence SGIALSRLAQRK-C, from the N Terminus of the protein sequence according to NP_003336.1.

Please note the [peptide](#) is available for sale.

Purification and Storage

Purified from goat serum by ammonium sulphate precipitation followed by antigen affinity chromatography using the immunizing peptide.

Supplied at 0.5 mg/ml in Tris saline, 0.02% sodium azide, pH7.3 with 0.5% bovine serum albumin.

Aliquot and store at -20°C. Minimize freezing and thawing.

Applications Tested

Peptide ELISA: antibody detection limit dilution 1:64000.

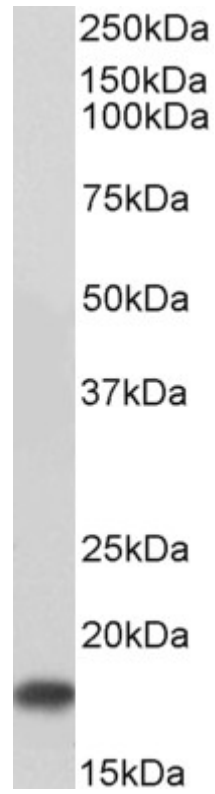
Western blot: Approx 17kDa band observed in Human Kidney lysates and in Rat Ovary, Heart and Testis lysates (calculated MW of 18.0kDa according to Human NP_003336.1). Recommended concentration: 0.1-0.3µg/ml. Primary incubation was 1 hour.

IHC: In paraffin embedded Human Kidney, shows nuclear staining of some epithelial cells of glomeruli and renal tubules. Recommended concentration: 1µg/ml.

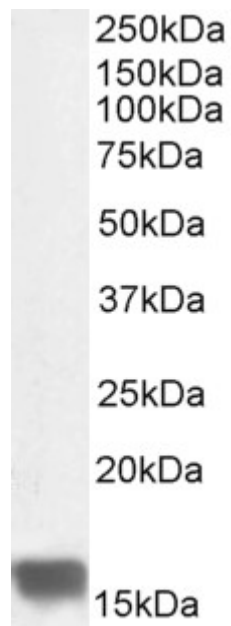
Species Reactivity

Tested: Human, Rat

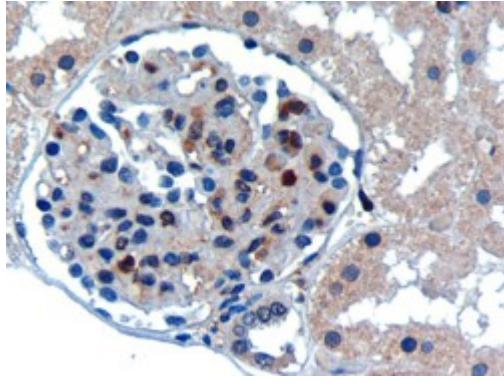
Expected from sequence similarity: Human, Mouse, Rat, Dog



EB05759 (0.1 μ g/ml) staining of Human Kidney lysate (35 μ g protein in RIPA buffer). Detected by chemiluminescence.



EB05759 (0.3 μ g/ml) staining of Rat Ovary lysate (35 μ g protein in RIPA buffer). Detected by chemiluminescence.



EB05759 (0.3 μ g/ml) staining of paraffin embedded Human Kidney. Microwaved antigen retrieval with Tris/EDTA buffer pH9, HRP-staining.