



SZABO SCANDIC

Part of Europa Biosite

Produktinformation



Forschungsprodukte & Biochemikalien



Zellkultur & Verbrauchsmaterial



Diagnostik & molekulare Diagnostik



Laborgeräte & Service

Weitere Information auf den folgenden Seiten!
See the following pages for more information!



Lieferung & Zahlungsart

siehe unsere [Liefer- und Versandbedingungen](#)

Zuschläge

- Mindermengenzuschlag
- Trockeneiszuschlag
- Gefahrgutzuschlag
- Expressversand

SZABO-SCANDIC HandelsgmbH

Quellenstraße 110, A-1100 Wien

T. +43(0)1 489 3961-0

F. +43(0)1 489 3961-7

mail@szabo-scandic.com

www.szabo-scandic.com

[linkedin.com/company/szaboscandic](https://www.linkedin.com/company/szaboscandic) 



UK Office

Everest Biotech Ltd

Cherwell Innovation Centre
77 Heyford Park
Upper Heyford
Oxfordshire
OX25 5HD
UK

Enquiries:

info@everestbiotech.com

Sales:

sales@everestbiotech.com

Tech support:

support@everestbiotech.com

Tel: +44 (0)1869 238326

Fax: +44 (0)1869 238327

US Office

Everest Biotech c/o Abcore

405 Maple Street, Suite A106
Ramona,
CA 92065
USA

Inquiries:

info@everestbiotech.com

Sales:

usasales@everestbiotech.com

Tech support:

support@everestbiotech.com

Tel: 888-320-4628 (toll-free)

Fax: 888-841-9041

www.everestbiotech.com

**Research Use Only. Not for
diagnostic or therapeutic use.**

EB05807 - Goat Anti-TIF1A / TRIM24 Antibody

Size: 100µg specific antibody in 200µl



Target Protein

Principal Names: TRIM24, TIF1, transcriptional intermediary factor 1, PTC6, TF1A, TIF1A, Tif1a, hTIF1, TIF1ALPHA, transcriptional intermediary factor 1 alpha, tripartite motif protein 24, tripartite motif-containing 24, RNF82

Official Symbol: TRIM24

Accession Number(s): NP_056989.2; NP_003843.3

Human GeneID(s): [8805](#)

Important Comments: This antibody is expected to recognise both reported isoforms, as represented by NP_003843.3 and NP_056989.2.

Immunogen

Peptide with sequence C-KRLKSIEERQLLK, from the C Terminus of the protein sequence according to NP_056989.2; NP_003843.3.

Please note the [peptide](#) is available for sale.

Purification and Storage

Purified from goat serum by ammonium sulphate precipitation followed by antigen affinity chromatography using the immunizing peptide.

Supplied at 0.5 mg/ml in Tris saline, 0.02% sodium azide, pH7.3 with 0.5% bovine serum albumin.

Aliquot and store at -20°C. Minimize freezing and thawing.

Applications Tested

Peptide ELISA: antibody detection limit dilution 1:32000.

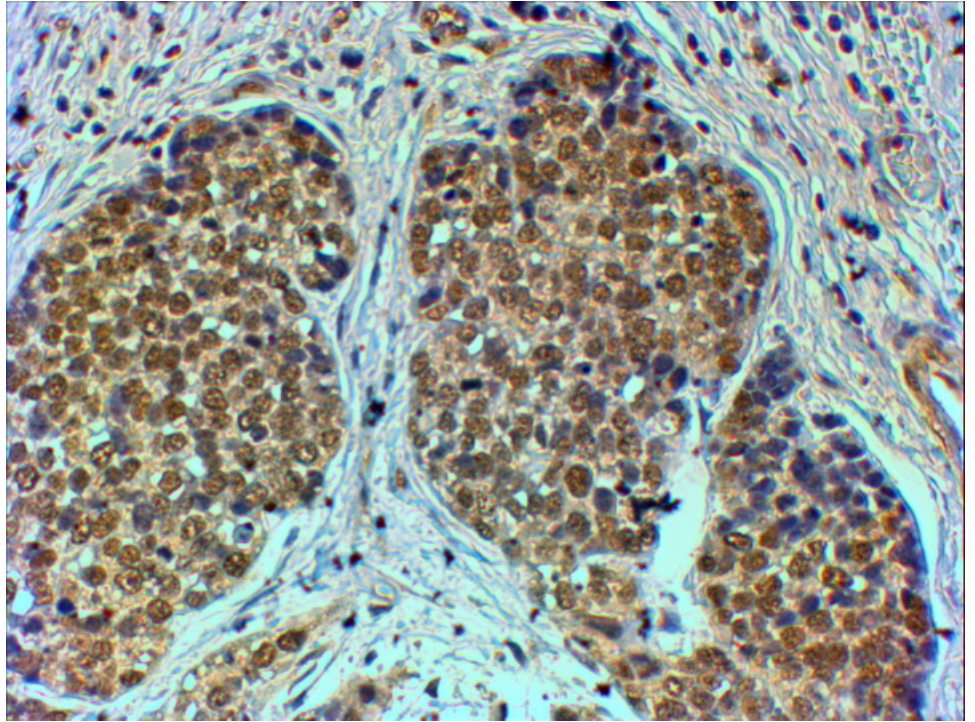
Western blot: Preliminary experiments gave an approx 120kDa band in human kidney and heart lysates at 1ug/ml, however prominent bands were also seen at 25kDa and 45kDa. Please note that currently we cannot find an explanation in the literature for some of the bands we observe given the predicted sizes of approx. 117kDa and 121kDa according to NP_003843 and NP_056989. We would appreciate any feedback from people in the field - have any results been reported with other antibodies/lysates? Have any further splice variants/modified forms been reported?

IHC: In paraffin embedded Human Breast cancer shows nuclear staining in the distorted lobules. Recommended concentration, 4-6µg/ml.

Species Reactivity

Tested: Human

Expected from sequence similarity: Human, Cow



EB05807 (4µg/ml) staining of paraffin embedded Human Breast cancer. Steamed antigen retrieval with citrate buffer pH 6, HRP-staining.