



SZABO SCANDIC

Part of Europa Biosite

Produktinformation



Forschungsprodukte & Biochemikalien



Zellkultur & Verbrauchsmaterial



Diagnostik & molekulare Diagnostik



Laborgeräte & Service

Weitere Information auf den folgenden Seiten!
See the following pages for more information!



Lieferung & Zahlungsart

siehe unsere [Liefer- und Versandbedingungen](#)

Zuschläge

- Mindermengenzuschlag
- Trockeneiszuschlag
- Gefahrgutzuschlag
- Expressversand

SZABO-SCANDIC HandelsgmbH

Quellenstraße 110, A-1100 Wien

T. +43(0)1 489 3961-0

F. +43(0)1 489 3961-7

mail@szabo-scandic.com

www.szabo-scandic.com

[linkedin.com/company/szaboscandic](https://www.linkedin.com/company/szaboscandic) 



UK Office

Everest Biotech Ltd

Cherwell Innovation Centre
77 Heyford Park
Upper Heyford
Oxfordshire
OX25 5HD
UK

Enquiries:

info@everestbiotech.com

Sales:

sales@everestbiotech.com

Tech support:

support@everestbiotech.com

Tel: +44 (0)1869 238326

Fax: +44 (0)1869 238327

US Office

Everest Biotech c/o Abcore

405 Maple Street, Suite A106
Ramona,
CA 92065
USA

Inquiries:

info@everestbiotech.com

Sales:

usasales@everestbiotech.com

Tech support:

support@everestbiotech.com

Tel: 888-320-4628 (toll-free)

Fax: 888-841-9041

www.everestbiotech.com

**Research Use Only. Not for
diagnostic or therapeutic use.**

EB05845 - Goat Anti-PI31 / PSMF1 (Isoform 1) Antibody

Size: 100µg specific antibody in 200µl



Target Protein

Principal Names: PSMF1, PI31, proteasome (prosome, macropain) inhibitor subunit 1 (PI31), RP4-545L17.1, proteasome inhibitor hP131 subunit, proteasome inhibitor subunit 1

Official Symbol: PSMF1

Accession Number(s): NP_006805.2

Human GeneID(s): [9491](#)

Non-Human GeneID(s): 228769 (mouse)

Important Comments: This antibody is expected to recognize isoform 1 (NP_006805.2 and NP_848693.2).

Immunogen

Peptide with sequence C-DHLPPPGYDDMYL, from the C Terminus of the protein sequence according to NP_006805.2.

Please note the [peptide](#) is available for sale.

Purification and Storage

Purified from goat serum by ammonium sulphate precipitation followed by antigen affinity chromatography using the immunizing peptide.

Supplied at 0.5 mg/ml in Tris saline, 0.02% sodium azide, pH7.3 with 0.5% bovine serum albumin.

Aliquot and store at -20°C. Minimize freezing and thawing.

Applications Tested

Peptide ELISA: antibody detection limit dilution 1:32000.

Western blot: Approx 30kDa band observed in lysates of cell line HEK293, approx 30-32kDa in lysates of cell lines K562, NIH3T3, Neuro2a and KNRK, and approx. 35kDa in lysates of cell line LNCaP (calculated MW of 29.8kDa according to Human NP_006805.2 and Rat NP_001094475.1, and 28.7kDa according to Mouse NP_997611.1). Recommended concentration: 0.3-1µg/ml Primary incubation 1 hour at room temperature.

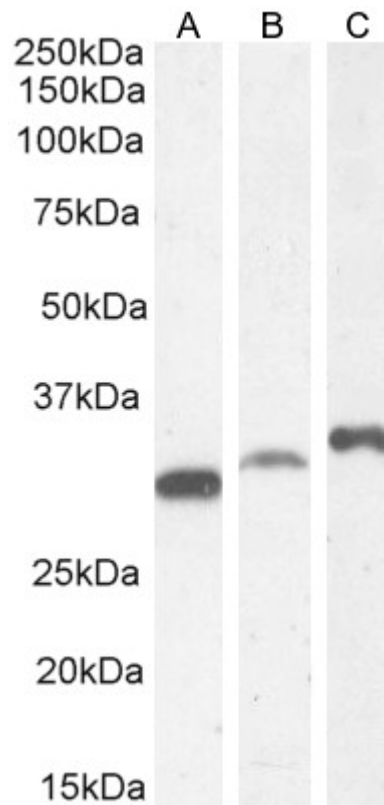
Immunofluorescence: Strong expression of the protein seen in the endoplasmic reticulum and cytoplasm of A431 cells. Recommended concentration: 10µg/ml.

Flow Cytometry: A customer reported weak staining of A431 cells at 10ug/ml.

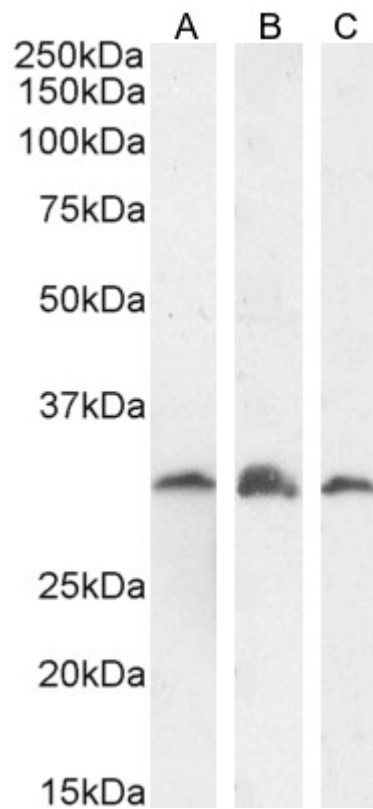
Species Reactivity

Tested: Human, Mouse, Rat

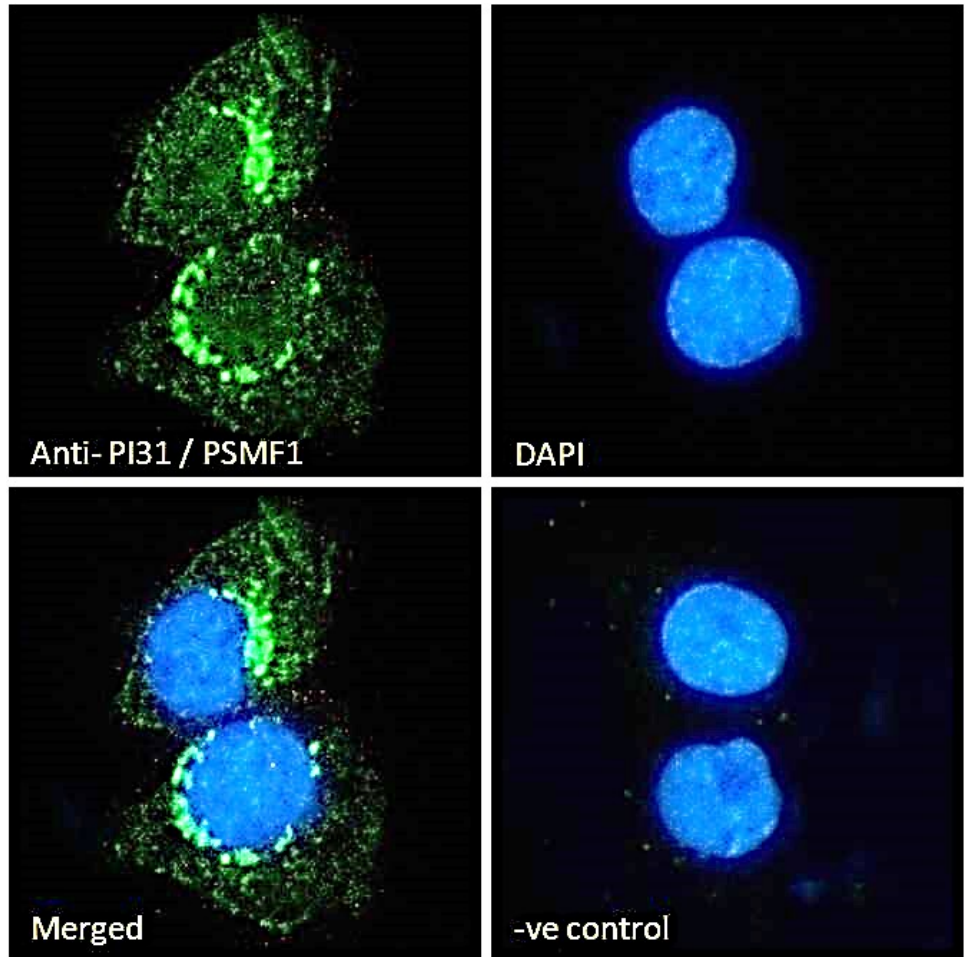
Expected from sequence similarity: Human, Mouse, Rat, Dog, Cow



EB05845 (0.3 μ g/ml) staining of HEK293 (A), K562 (B) and (1 μ g/ml) LNCaP (C) cell lysate (35 μ g protein in RIPA buffer). Detected by chemiluminescence.



EB05845 (1 μ g/ml) staining of KNRK (A), NIH3T3 (B) and (0.3 μ g/ml) Neuro2a (C) cell lysate (35 μ g protein in RIPA buffer). Detected by chemiluminescence.



EB05845 Immunofluorescence analysis of paraformaldehyde fixed A431 cells, permeabilized with 0.15% Triton. Primary incubation 1hr (10ug/ml) followed by Alexa Fluor 488 secondary antibody (2ug/ml), showing endoplasmic reticulum and cytoplasmic staining. The nuclear stain is DAPI (blue). Negative control: Unimmunized goat IgG (10ug/ml) followed by Alexa Fluor 488 secondary antibody (2ug/ml).