



# SZABO SCANDIC

Part of Europa Biosite

## Produktinformation



Forschungsprodukte & Biochemikalien



Zellkultur & Verbrauchsmaterial



Diagnostik & molekulare Diagnostik



Laborgeräte & Service

Weitere Information auf den folgenden Seiten!  
See the following pages for more information!



### Lieferung & Zahlungsart

siehe unsere [Liefer- und Versandbedingungen](#)

### Zuschläge

- Mindermengenzuschlag
- Trockeneiszuschlag
- Gefahrgutzuschlag
- Expressversand

### SZABO-SCANDIC HandelsgmbH

Quellenstraße 110, A-1100 Wien

T. +43(0)1 489 3961-0

F. +43(0)1 489 3961-7

[mail@szabo-scandic.com](mailto:mail@szabo-scandic.com)

[www.szabo-scandic.com](http://www.szabo-scandic.com)

[linkedin.com/company/szaboscandic](https://www.linkedin.com/company/szaboscandic) 



## UK Office

### Everest Biotech Ltd

Cherwell Innovation Centre  
77 Heyford Park  
Upper Heyford  
Oxfordshire  
OX25 5HD  
UK

Enquiries:

[info@everestbiotech.com](mailto:info@everestbiotech.com)

Sales:

[sales@everestbiotech.com](mailto:sales@everestbiotech.com)

Tech support:

[support@everestbiotech.com](mailto:support@everestbiotech.com)

Tel: +44 (0)1869 238326

Fax: +44 (0)1869 238327

## US Office

### Everest Biotech c/o Abcore

405 Maple Street, Suite A106  
Ramona,  
CA 92065  
USA

Inquiries:

[info@everestbiotech.com](mailto:info@everestbiotech.com)

Sales:

[usasales@everestbiotech.com](mailto:usasales@everestbiotech.com)

Tech support:

[support@everestbiotech.com](mailto:support@everestbiotech.com)

Tel: 888-320-4628 (toll-free)

Fax: 888-841-9041

[www.everestbiotech.com](http://www.everestbiotech.com)

**Research Use Only. Not for  
diagnostic or therapeutic use.**

## EB05869 - Goat Anti-ALS2CR1 / NIF3L1 Antibody

Size: 100µg specific antibody in 200µl



### Target Protein

**Principal Names:** NIF3L1, ALS2CR1, NIF3 NGG1 interacting factor 3-like 1 (S. pombe), CALS-7, MDS015, NIF3 (Ngg1 interacting factor 3, S.pombe homolog)-like 1, amyotrophic lateral sclerosis 2 (juvenile) chromosome region, candidate 1, NIF3 NGG1 interacting factor 3-like 1, OTTHUMP00000206190, OTTHUMP00000206191, OTTHUMP00000206192

**Official Symbol:** NIF3L1

**Accession Number(s):** NP\_001129511.1; NP\_068596.2

**Human GeneID(s):** [60491](#)

**Non-Human GeneID(s):** 65102 (mouse)

**Important Comments:** This antibody is expected to recognise both reported isoforms. Variants (NP\_001135827.1; NP\_068596.2) encode the same isoform.

### Immunogen

Peptide with sequence C-ILSETDRDPLQVV, from the C Terminus of the protein sequence according to NP\_001129511.1; NP\_068596.2.

Please note the [peptide](#) is available for sale.

### Purification and Storage

Purified from goat serum by ammonium sulphate precipitation followed by antigen affinity chromatography using the immunizing peptide.

Supplied at 0.5 mg/ml in Tris saline, 0.02% sodium azide, pH7.3 with 0.5% bovine serum albumin.

Aliquot and store at -20°C. Minimize freezing and thawing.

### Applications Tested

**Peptide ELISA:** antibody detection limit dilution 1:32000.

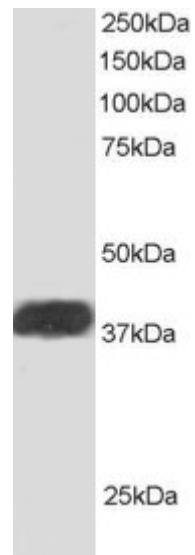
**Western blot:** Approx 40kDa band seen in Human Heart and Human Testis extracts [Predicted MW of approx. 39kDa according to NP\_068596]. Recommended for use at 0.2-1µg/ml.

**IHC:** In paraffin embedded Human Breast shows strong cytoplasm staining in epithelial and myoepithelial duct cells. Recommended concentration, 2-4µg/ml.

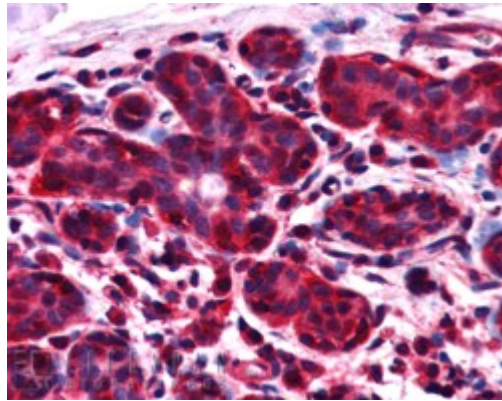
### Species Reactivity

**Tested:** Human

**Expected from sequence similarity:** Human, Mouse



EB05869 staining (1ug/ml) of Human Heart lysate (RIPA buffer, 30ug total protein per lane). Primary incubated for 1 hour. Detected by western blot using chemiluminescence.



EB05869 (2.5µg/ml) staining of paraffin embedded Human Breast. Steamed antigen retrieval with citrate buffer pH 6, AP-staining.