



SZABO SCANDIC

Part of Europa Biosite

Produktinformation



Forschungsprodukte & Biochemikalien



Zellkultur & Verbrauchsmaterial



Diagnostik & molekulare Diagnostik



Laborgeräte & Service

Weitere Information auf den folgenden Seiten!
See the following pages for more information!



Lieferung & Zahlungsart

siehe unsere [Liefer- und Versandbedingungen](#)

Zuschläge

- Mindermengenzuschlag
- Trockeneiszuschlag
- Gefahrgutzuschlag
- Expressversand

SZABO-SCANDIC HandelsgmbH

Quellenstraße 110, A-1100 Wien

T. +43(0)1 489 3961-0

F. +43(0)1 489 3961-7

mail@szabo-scandic.com

www.szabo-scandic.com

[linkedin.com/company/szaboscandic](https://www.linkedin.com/company/szaboscandic) 



UK Office

Everest Biotech Ltd

Cherwell Innovation Centre
77 Heyford Park
Upper Heyford
Oxfordshire
OX25 5HD
UK

Enquiries:

info@everestbiotech.com

Sales:

sales@everestbiotech.com

Tech support:

support@everestbiotech.com

Tel: +44 (0)1869 238326

Fax: +44 (0)1869 238327

US Office

Everest Biotech c/o Abcore

405 Maple Street, Suite A106
Ramona,
CA 92065
USA

Inquiries:

info@everestbiotech.com

Sales:

usasales@everestbiotech.com

Tech support:

support@everestbiotech.com

Tel: 888-320-4628 (toll-free)

Fax: 888-841-9041

www.everestbiotech.com

**Research Use Only. Not for
diagnostic or therapeutic use.**

EB05904 - Goat Anti-SNX16 Antibody

Size: 100µg specific antibody in 200µl



Target Protein

Principal Names: SNX16, sorting nexin 16, DKFZp666H147

Official Symbol: SNX16

Accession Number(s): NP_071416.2; NP_690049.1; NP_690050.1

Human GeneID(s): [64089](#)

Non-Human GeneID(s): 74718 (mouse), 64088 (rat)

Important Comments: This antibody is expected to recognise both isoform a (NP_071416.2; NP_690049.1) and isoform b (NP_690050.1).

Immunogen

Peptide with sequence ATPYVPVPMPIGN-C, from the N Terminus of the protein sequence according to NP_071416.2; NP_690049.1; NP_690050.1.

Please note the [peptide](#) is available for sale.

Purification and Storage

Purified from goat serum by ammonium sulphate precipitation followed by antigen affinity chromatography using the immunizing peptide.

Supplied at 0.5 mg/ml in Tris saline, 0.02% sodium azide, pH7.3 with 0.5% bovine serum albumin.

Aliquot and store at -20°C. Minimize freezing and thawing.

Applications Tested

Peptide ELISA: antibody detection limit dilution 1:64000.

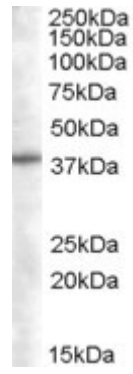
Western blot: Approx 38kDa band observed in lysates of cell line Daudi (calculated MW of 39.2kDa according to NP_071416.2). In transfected HEK293 transiently expressing SNX16 a band of approx. 40kDa is observed. This band is not observed in the non-transfected HEK293. Recommended concentration: 0.05-0.2µg/ml.

IHC: Paraffin embedded Human Placenta, Tonsil and Breast. Recommended concentration: 3.75µg/ml.

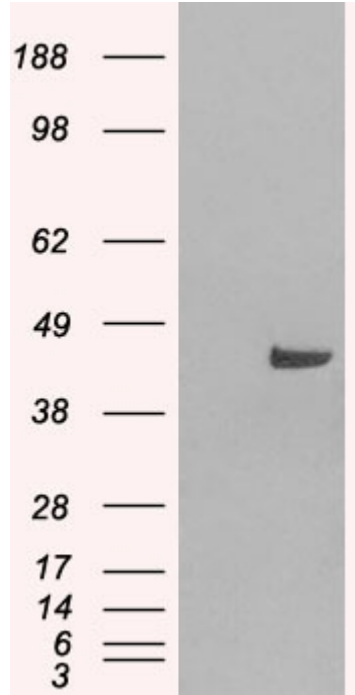
Species Reactivity

Tested: Human

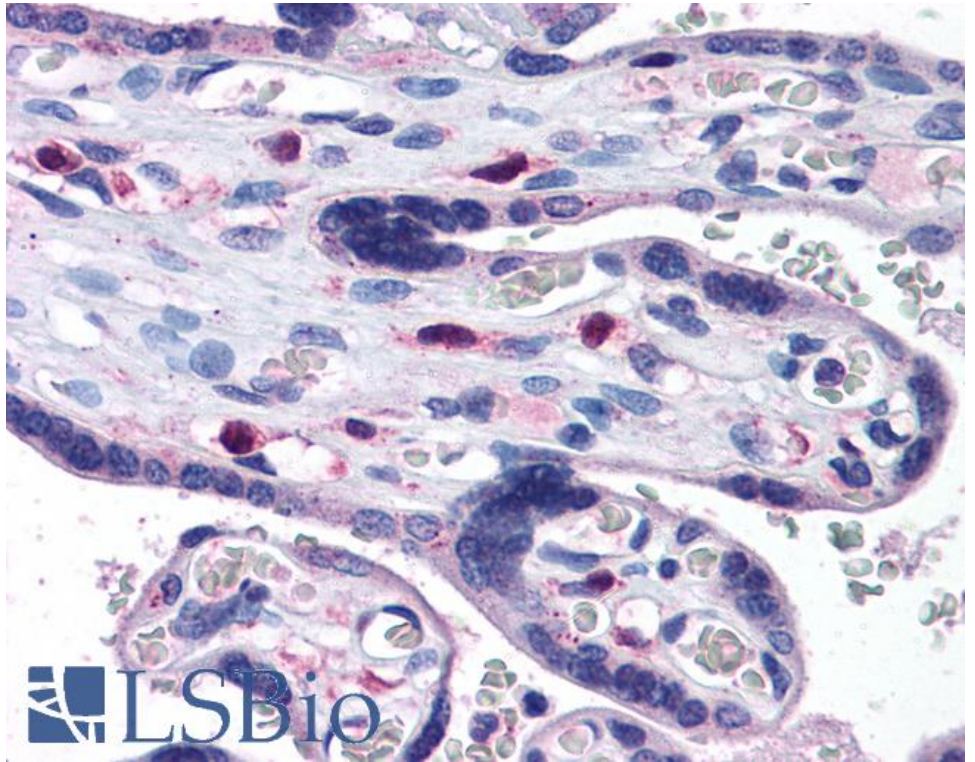
Expected from sequence similarity: Human, Mouse, Rat, Dog, Pig, Cow



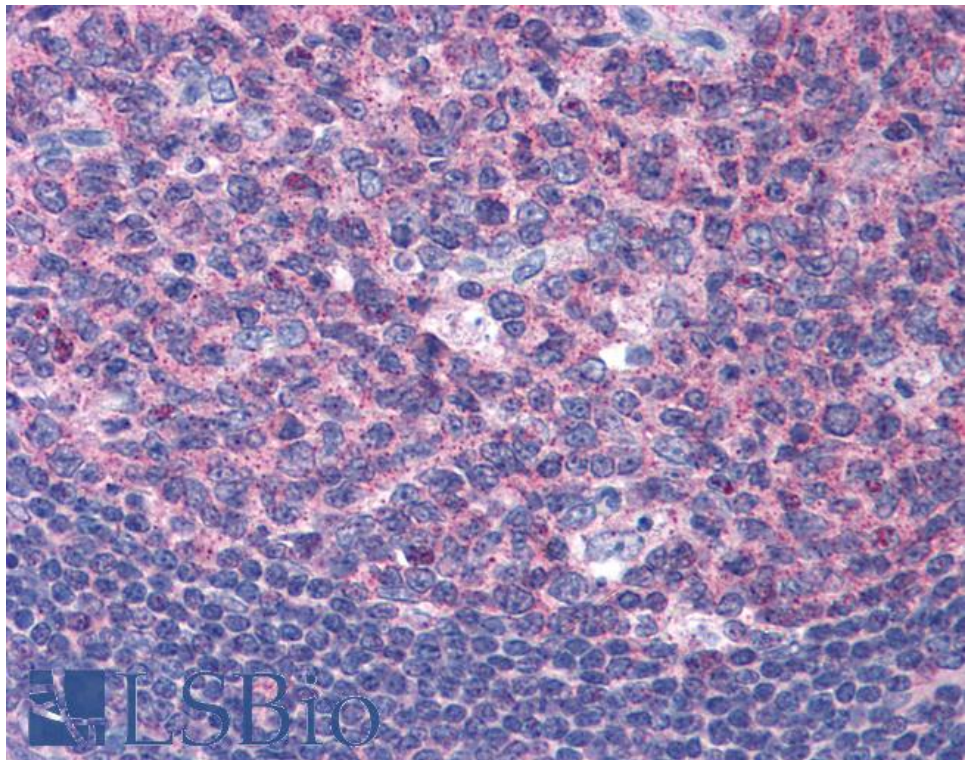
EB05904 (0.05µg/ml) staining of Daudi lysate (35µg protein in RIPA buffer). Primary incubation was 1 hour.
Detected by chemiluminescence.



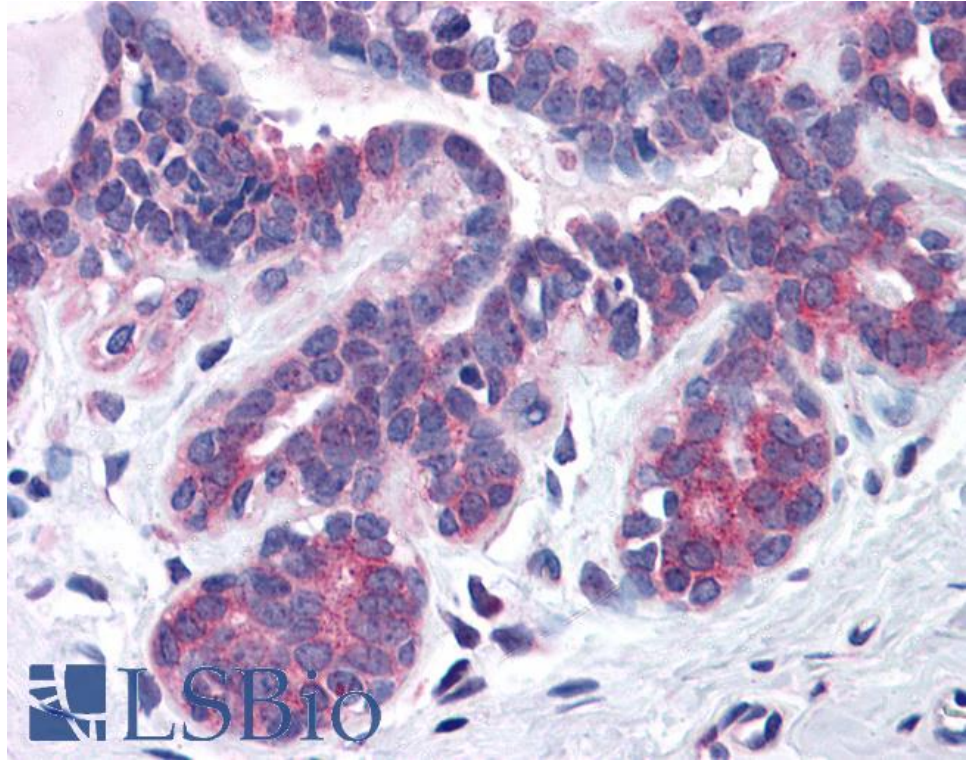
HEK293 overexpressing SNX16 (RC207476) and probed with EB05904 (mock transfection in first lane), tested by Origene.



EB05904 (3.75µg/ml) staining of paraffin embedded Human Placenta. Steamed antigen retrieval with citrate buffer pH 6, AP-staining.



EB05904 (3.75µg/ml) staining of paraffin embedded Human Tonsil. Steamed antigen retrieval with citrate buffer pH 6, AP-staining.



EB05904 (3.75µg/ml) staining of paraffin embedded Human Breast. Steamed antigen retrieval with citrate buffer pH 6, AP-staining.