



SZABO SCANDIC

Part of Europa Biosite

Produktinformation



Forschungsprodukte & Biochemikalien



Zellkultur & Verbrauchsmaterial



Diagnostik & molekulare Diagnostik



Laborgeräte & Service

Weitere Information auf den folgenden Seiten!
See the following pages for more information!



Lieferung & Zahlungsart

siehe unsere [Liefer- und Versandbedingungen](#)

Zuschläge

- Mindermengenzuschlag
- Trockeneiszuschlag
- Gefahrgutzuschlag
- Expressversand

SZABO-SCANDIC HandelsgmbH

Quellenstraße 110, A-1100 Wien

T. +43(0)1 489 3961-0

F. +43(0)1 489 3961-7

mail@szabo-scandic.com

www.szabo-scandic.com

[linkedin.com/company/szaboscandic](https://www.linkedin.com/company/szaboscandic) 



UK Office

Everest Biotech Ltd

Cherwell Innovation Centre
77 Heyford Park
Upper Heyford
Oxfordshire
OX25 5HD
UK

Enquiries:

info@everestbiotech.com

Sales:

sales@everestbiotech.com

Tech support:

support@everestbiotech.com

Tel: +44 (0)1869 238326

Fax: +44 (0)1869 238327

US Office

Everest Biotech c/o Abcore

405 Maple Street, Suite A106
Ramona,
CA 92065
USA

Inquiries:

info@everestbiotech.com

Sales:

usasales@everestbiotech.com

Tech support:

support@everestbiotech.com

Tel: 888-320-4628 (toll-free)

Fax: 888-841-9041

www.everestbiotech.com

**Research Use Only. Not for
diagnostic or therapeutic use.**

EB05905 - Goat Anti-Npap60 / Nup50 Antibody

Size: 100µg specific antibody in 200µl



Target Protein

Principal Names: NUP50, NPAP60, NPAP60L, MGC39961, DKFZP564A043, nucleoporin 50kDa, nuclear pore-associated protein 60L, CTA-268H5.7, OTTHUMP00000199530

Official Symbol: NUP50

Accession Number(s): NP_009103.2; NP_705931.1

Human GeneID(s): [10762](#)

Non-Human GeneID(s): 18141 (mouse)

Important Comments: This antibody is expected to recognise both reported isoforms (NP_009103.2; NP_705931.1).

Immunogen

Peptide with sequence C-ELHKILLEKKDA, from the C Terminus of the protein sequence according to NP_009103.2; NP_705931.1.

Please note the [peptide](#) is available for sale.

Purification and Storage

Purified from goat serum by ammonium sulphate precipitation followed by antigen affinity chromatography using the immunizing peptide.

Supplied at 0.5 mg/ml in Tris saline, 0.02% sodium azide, pH7.3 with 0.5% bovine serum albumin.

Aliquot and store at -20°C. Minimize freezing and thawing.

Applications Tested

Peptide ELISA: antibody detection limit dilution 1:32000.

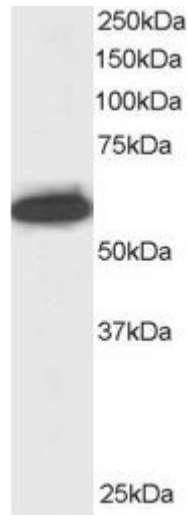
Western blot: Approx 60kDa band observed in lysates of cell line Jurkat (calculated MW 50.1 kDa according to NP_009103.2). Recommended for use at 0.2-1µg/ml.

IHC: In paraffin embedded Human Uterus shows textured nuclear staining of endometrial cells. Recommended concentration, 2.5-3.8µg/ml.

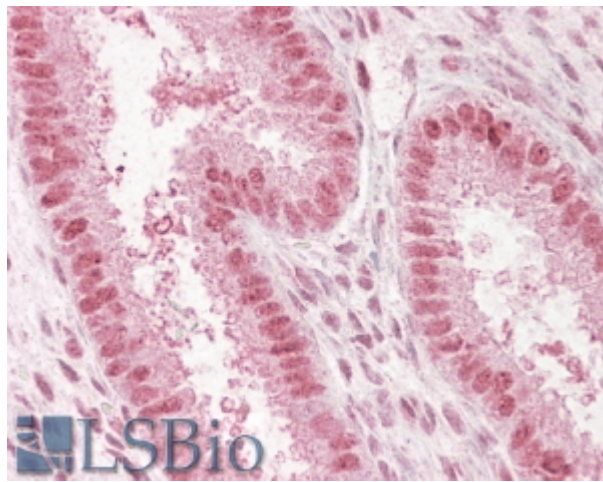
Species Reactivity

Tested: Human

Expected from sequence similarity: Human, Mouse, Rat, Cow



EB05905 staining (0.5 μ g/ml) of Jurkat lysate (RIPA buffer, 30 μ g total protein per lane). Primary incubated for 1 hour. Detected by western blot using chemiluminescence.



EB05905 (3.8 μ g/ml) staining of paraffin embedded Human Uterus. Steamed antigen retrieval with citrate buffer pH 6, AP-staining.