



# SZABO SCANDIC

Part of Europa Biosite

## Produktinformation



Forschungsprodukte & Biochemikalien



Zellkultur & Verbrauchsmaterial



Diagnostik & molekulare Diagnostik



Laborgeräte & Service

Weitere Information auf den folgenden Seiten!  
See the following pages for more information!



### Lieferung & Zahlungsart

siehe unsere [Liefer- und Versandbedingungen](#)

### Zuschläge

- Mindermengenzuschlag
- Trockeneiszuschlag
- Gefahrgutzuschlag
- Expressversand

### SZABO-SCANDIC HandelsgmbH

Quellenstraße 110, A-1100 Wien

T. +43(0)1 489 3961-0

F. +43(0)1 489 3961-7

[mail@szabo-scandic.com](mailto:mail@szabo-scandic.com)

[www.szabo-scandic.com](http://www.szabo-scandic.com)

[linkedin.com/company/szaboscandic](https://www.linkedin.com/company/szaboscandic) 



## EB05953 - Goat Anti-CSN2 / TRIP15 Antibody

Size: 100µg specific antibody in 200µl



### UK Office

#### Everest Biotech Ltd

Cherwell Innovation Centre  
77 Heyford Park  
Upper Heyford  
Oxfordshire  
OX25 5HD  
UK

Enquiries:

[info@everestbiotech.com](mailto:info@everestbiotech.com)

Sales:

[sales@everestbiotech.com](mailto:sales@everestbiotech.com)

Tech support:

[support@everestbiotech.com](mailto:support@everestbiotech.com)

Tel: +44 (0)1869 238326

Fax: +44 (0)1869 238327

### US Office

#### Everest Biotech c/o Abcore

405 Maple Street, Suite A106  
Ramona,  
CA 92065  
USA

Inquiries:

[info@everestbiotech.com](mailto:info@everestbiotech.com)

Sales:

[usasales@everestbiotech.com](mailto:usasales@everestbiotech.com)

Tech support:

[support@everestbiotech.com](mailto:support@everestbiotech.com)

Tel: 888-320-4628 (toll-free)

Fax: 888-841-9041

[www.everestbiotech.com](http://www.everestbiotech.com)

**Research Use Only. Not for  
diagnostic or therapeutic use.**

### Target Protein

**Principal Names:** COPS2, TRIP15, COPS2, CSN2, thyroid receptor interacting protein 15, SGN2, COP9 constitutive photomorphogenic homolog subunit 2, thyroid receptor interacting protein 15, COP9 constitutive photomorphogenic homolog subunit 2 (Arabidopsis), COP9, subunit 2, ALIEN, COP9 signalosome complex subunit 2, JAB1-containing signalosome subunit 2

**Official Symbol:** COPS2

**Accession Number(s):** NP\_004227.1; NP\_001137359.1

**Human GeneID(s):** [9318](#)

**Non-Human GeneID(s):** 12848 (mouse), 261736 (rat)

### Immunogen

Peptide with sequence C-LNSLNQAVVSKLA, from the C Terminus of the protein sequence according to NP\_004227.1; NP\_001137359.1.

Please note the [peptide](#) is available for sale.

### Purification and Storage

Purified from goat serum by ammonium sulphate precipitation followed by antigen affinity chromatography using the immunizing peptide.

Supplied at 0.5 mg/ml in Tris saline, 0.02% sodium azide, pH7.3 with 0.5% bovine serum albumin.

Aliquot and store at -20°C. Minimize freezing and thawing.

### Applications Tested

**Peptide ELISA:** antibody detection limit dilution 1:16000.

**Western blot:** Approx. 48kDa band observed in lysates of Mouse pituitary cell line NIH3T3 (calculated MW of 51.6kDa according to NP\_004227.1). Recommended concentration: 1-3µg/ml.

**IHC:** In paraffin embedded Human Thyroid Gland shows nuclear and cytoplasm staining in activated epithelial cells Recommended concentration: 3-5µg/ml.

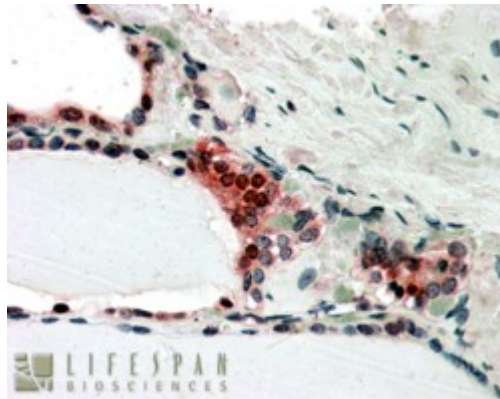
### Species Reactivity

**Tested:** Human, Mouse

**Expected from sequence similarity:** Human, Mouse, Rat, Dog, Cow



EB05953 staining (0.03 $\mu$ g/ml) of NIH3T3 lysates (RIPA buffer, 30 $\mu$ g total protein per lane). Primary incubated for 1 hour. Detected by chemiluminescence.



In paraffin embedded Human Thyroid Gland shows nuclear and cytoplasm staining in activated epithelial cells  
Recommended concentration, 3-5 $\mu$ g/ml.