



SZABO SCANDIC

Part of Europa Biosite

Produktinformation



Forschungsprodukte & Biochemikalien



Zellkultur & Verbrauchsmaterial



Diagnostik & molekulare Diagnostik



Laborgeräte & Service

Weitere Information auf den folgenden Seiten!
See the following pages for more information!



Lieferung & Zahlungsart

siehe unsere [Liefer- und Versandbedingungen](#)

Zuschläge

- Mindermengenzuschlag
- Trockeneiszuschlag
- Gefahrgutzuschlag
- Expressversand

SZABO-SCANDIC HandelsgmbH

Quellenstraße 110, A-1100 Wien

T. +43(0)1 489 3961-0

F. +43(0)1 489 3961-7

mail@szabo-scandic.com

www.szabo-scandic.com

[linkedin.com/company/szaboscandic](https://www.linkedin.com/company/szaboscandic) 



UK Office

Everest Biotech Ltd

Cherwell Innovation Centre
77 Heyford Park
Upper Heyford
Oxfordshire
OX25 5HD
UK

Enquiries:

info@everestbiotech.com

Sales:

sales@everestbiotech.com

Tech support:

support@everestbiotech.com

Tel: +44 (0)1869 238326

Fax: +44 (0)1869 238327

US Office

Everest Biotech c/o Abcore

405 Maple Street, Suite A106
Ramona,
CA 92065
USA

Inquiries:

info@everestbiotech.com

Sales:

usasales@everestbiotech.com

Tech support:

support@everestbiotech.com

Tel: 888-320-4628 (toll-free)

Fax: 888-841-9041

www.everestbiotech.com

**Research Use Only. Not for
diagnostic or therapeutic use.**

EB05989 - Goat Anti-REV1L Antibody

Size: 100µg specific antibody in 200µl



Target Protein

Principal Names: REV1, REV1L, REV1-like (yeast), REV1, REV1 protein, REV1 (yeast homolog)- like, REV1 homolog (S. cerevisiae), FLJ21523, MGC163283, MGC26225, REV1- like

Official Symbol: REV1

Accession Number(s): NP_057400.1; NP_001032961.1

Human GeneID(s): [51455](#)

Non-Human GeneID(s): 56210 (mouse)

Important Comments: This antibody is expected to recognise both reported isoforms.

Immunogen

Peptide with sequence C-VLQQTYGSTLKVT, from the C Terminus of the protein sequence according to NP_057400.1; NP_001032961.1.

Please note the [peptide](#) is available for sale.

Purification and Storage

Purified from goat serum by ammonium sulphate precipitation followed by antigen affinity chromatography using the immunizing peptide.

Supplied at 0.5 mg/ml in Tris saline, 0.02% sodium azide, pH7.3 with 0.5% bovine serum albumin.

Aliquot and store at -20°C. Minimize freezing and thawing.

Applications Tested

Peptide ELISA: antibody detection limit dilution 1:8000.

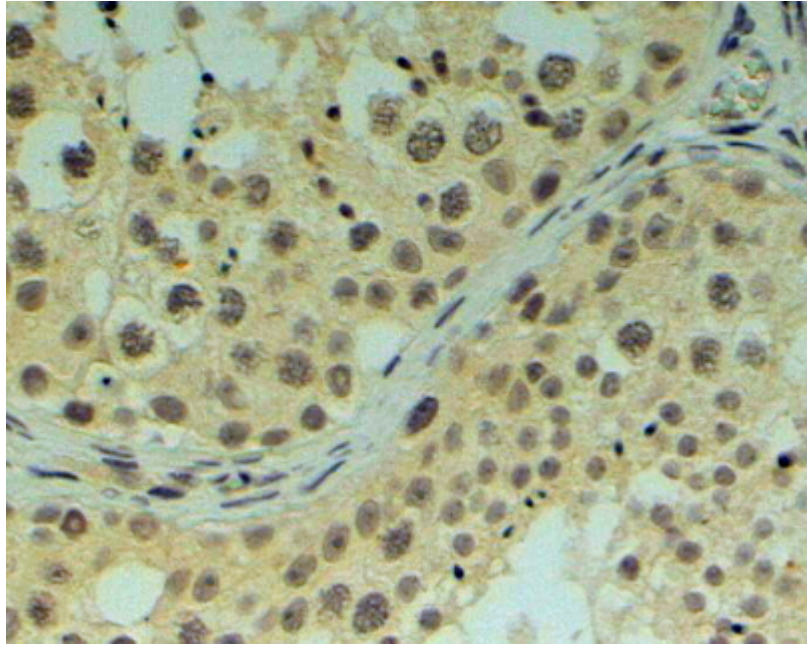
Western blot: No signal obtained yet but low background observed in MOLT-4 lysates at up to 1.5µg/ml. We would appreciate any feedback from people in the field - have any results been reported with other antibodies/lysates?

IHC: In paraffin embedded Human Testis shows nuclear staining in spermatogonia and spermatocytes. Recommended concentration, 4-6µg/ml.

Species Reactivity

Tested: Human

Expected from sequence similarity: Human, Mouse, Rat, Dog, Cow



EB05989 (4µg/ml) staining of paraffin embedded Human Testis. Steamed antigen retrieval with Tris/EDTA buffer pH 9, HRP-staining.