



SZABO SCANDIC

Part of Europa Biosite

Produktinformation



Forschungsprodukte & Biochemikalien



Zellkultur & Verbrauchsmaterial



Diagnostik & molekulare Diagnostik



Laborgeräte & Service

Weitere Information auf den folgenden Seiten!
See the following pages for more information!



Lieferung & Zahlungsart

siehe unsere [Liefer- und Versandbedingungen](#)

Zuschläge

- Mindermengenzuschlag
- Trockeneiszuschlag
- Gefahrgutzuschlag
- Expressversand

SZABO-SCANDIC HandelsgmbH

Quellenstraße 110, A-1100 Wien

T. +43(0)1 489 3961-0

F. +43(0)1 489 3961-7

mail@szabo-scandic.com

www.szabo-scandic.com

[linkedin.com/company/szaboscandic](https://www.linkedin.com/company/szaboscandic) 



UK Office

Everest Biotech Ltd

Cherwell Innovation Centre
77 Heyford Park
Upper Heyford
Oxfordshire
OX25 5HD
UK

Enquiries:

info@everestbiotech.com

Sales:

sales@everestbiotech.com

Tech support:

support@everestbiotech.com

Tel: +44 (0)1869 238326

Fax: +44 (0)1869 238327

US Office

Everest Biotech c/o Abcore

405 Maple Street, Suite A106
Ramona,
CA 92065
USA

Inquiries:

info@everestbiotech.com

Sales:

usasales@everestbiotech.com

Tech support:

support@everestbiotech.com

Tel: 888-320-4628 (toll-free)

Fax: 888-841-9041

www.everestbiotech.com

**Research Use Only. Not for
diagnostic or therapeutic use.**

EB06007 - Goat Anti-FOXC2 Antibody

Size: 100µg specific antibody in 200µl



Target Protein

Principal Names: FOXC2, forkhead box C2 (MFH-1, mesenchyme forkhead 1), MFH1, MFH-1, FKHL14, MFH-1, mesenchyme forkhead 1, forkhead (Drosophila)-like 14, forkhead, Drosophila, homolog-like 14, forkhead (Drosophila)-like 14 (MFH-1, mesenchyme forkhead 1), LD, forkhead box C2, forkhead, Drosophila, homolog-like 14

Official Symbol: FOXC2

Accession Number(s): NP_005242.1

Human GeneID(s): [2303](#)

Non-Human GeneID(s): 14234 (mouse)

Immunogen

Peptide with sequence RHAAPYSYDCTKY, from the C Terminus of the protein sequence according to NP_005242.1.

Please note the [peptide](#) is available for sale.

Purification and Storage

Purified from goat serum by ammonium sulphate precipitation followed by antigen affinity chromatography using the immunizing peptide.

Supplied at 0.5 mg/ml in Tris saline, 0.02% sodium azide, pH7.3 with 0.5% bovine serum albumin.

Aliquot and store at -20°C. Minimize freezing and thawing.

Applications Tested

Peptide ELISA: antibody detection limit dilution 1:4000.

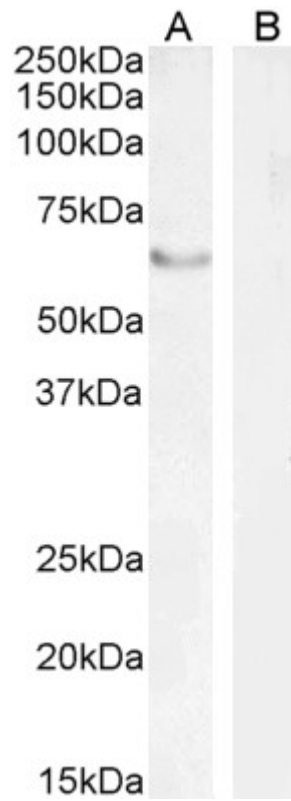
Western blot: Approx 60-70kDa band observed in nuclear lysates of cell lines HEK293 (calculated MW of 53.7kDa according to NP_005242.1). This molecular weight is routinely observed by other sources e.g. Berry, FB et al; PMID: 16081467. Recommended concentration: 2µg/ml. Primary incubation 1 hour at room temperature. **Negative Control:** Human Pancreas lysate. Recommended concentration, 0.3-1µg/ml. Preliminary testing was unsuccessful on NIH3T3 for this particular batch.

Flow Cytometry: Flow cytometric analysis of HEK293 cells. Recommended concentration: 10ug/ml.

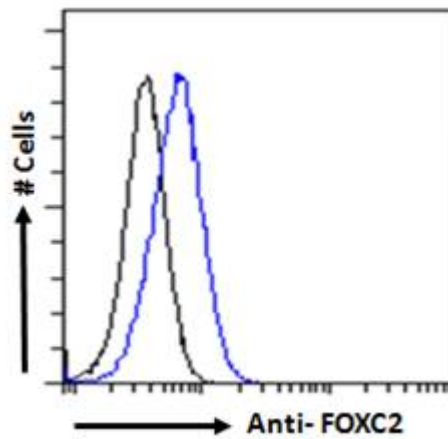
Species Reactivity

Tested: Human

Expected from sequence similarity: Human, Rat, Dog, Cow



EB06007 staining (2 μ g/ml) of nuclear HEK293 (A) and (1 μ g/ml) negative control Human Pancreas (B) lysate [RIPA buffer, 35 μ g total protein per lane]. Detected by chemiluminescence.



EB06007 Flow cytometric analysis of paraformaldehyde fixed HEK293 cells (blue line), permeabilized with 0.5% Triton. Primary incubation 1hr (10 μ g/ml) followed by Alexa Fluor 488 secondary antibody (1 μ g/ml). IgG control: Unimmunized goat IgG (black line) followed by Alexa Fluor 488 secondary antibody.