



SZABO SCANDIC

Part of Europa Biosite

Produktinformation



Forschungsprodukte & Biochemikalien



Zellkultur & Verbrauchsmaterial



Diagnostik & molekulare Diagnostik



Laborgeräte & Service

Weitere Information auf den folgenden Seiten!
See the following pages for more information!



Lieferung & Zahlungsart

siehe unsere [Liefer- und Versandbedingungen](#)

Zuschläge

- Mindermengenzuschlag
- Trockeneiszuschlag
- Gefahrgutzuschlag
- Expressversand

SZABO-SCANDIC HandelsgmbH

Quellenstraße 110, A-1100 Wien

T. +43(0)1 489 3961-0

F. +43(0)1 489 3961-7

mail@szabo-scandic.com

www.szabo-scandic.com

[linkedin.com/company/szaboscandic](https://www.linkedin.com/company/szaboscandic) 



UK Office

Everest Biotech Ltd

Cherwell Innovation Centre
77 Heyford Park
Upper Heyford
Oxfordshire
OX25 5HD
UK

Enquiries:

info@everestbiotech.com

Sales:

sales@everestbiotech.com

Tech support:

support@everestbiotech.com

Tel: +44 (0)1869 238326

Fax: +44 (0)1869 238327

US Office

Everest Biotech c/o Abcore

405 Maple Street, Suite A106
Ramona,
CA 92065
USA

Inquiries:

info@everestbiotech.com

Sales:

usasales@everestbiotech.com

Tech support:

support@everestbiotech.com

Tel: 888-320-4628 (toll-free)

Fax: 888-841-9041

www.everestbiotech.com

**Research Use Only. Not for
diagnostic or therapeutic use.**

EB06019 - Goat Anti-FOX11 / FKHL10 Antibody

Size: 100µg specific antibody in 200µl



Target Protein

Principal Names: FOX11, forkhead box I1, HFH3, FKHL10, FREAC6, HNF-3/fork-head homolog-3, forkhead-related activator 6, forkhead (Drosophila)-like 10, Forkhead, drosophila, homolog-like 10, hepatocyte nuclear factor 3 forkhead homolog 3, FKHL10, MGC34197, forkhead-like 10

Official Symbol: FOX11

Accession Number(s): NP_036320.2; NP_658982.1

Human GeneID(s): [2299](#)

Important Comments: This antibody is expected to recognise both reported human isoforms (NP_036320.2; NP_658982.1).

Immunogen

Peptide with sequence C-TSGVLYPREGTEV, from the C Terminus of the protein sequence according to NP_036320.2; NP_658982.1.

Please note the [peptide](#) is available for sale.

Purification and Storage

Purified from goat serum by ammonium sulphate precipitation followed by antigen affinity chromatography using the immunizing peptide.

Supplied at 0.5 mg/ml in Tris saline, 0.02% sodium azide, pH7.3 with 0.5% bovine serum albumin.

Aliquot and store at -20°C. Minimize freezing and thawing.

Applications Tested

Peptide ELISA: antibody detection limit dilution 1:8000.

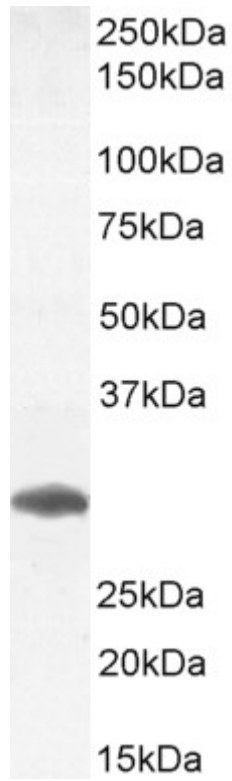
Western blot: Approx 30kDa band observed in Human Testis lysates and in preliminary testing of Human Breast lysate, and approx. 40kDa in preliminary testing of U251 and MCF7 cell lysate (calculated MW of 30.8kDa according to NP_658982.1 and 41.0kDa according to NP_036320.2). Recommended concentration: 1-3µg/ml. Primary incubation 1 hour at room temperature.

IHC: Paraffin embedded Human Kidney. Recommended concentration: 5-6µg/ml.

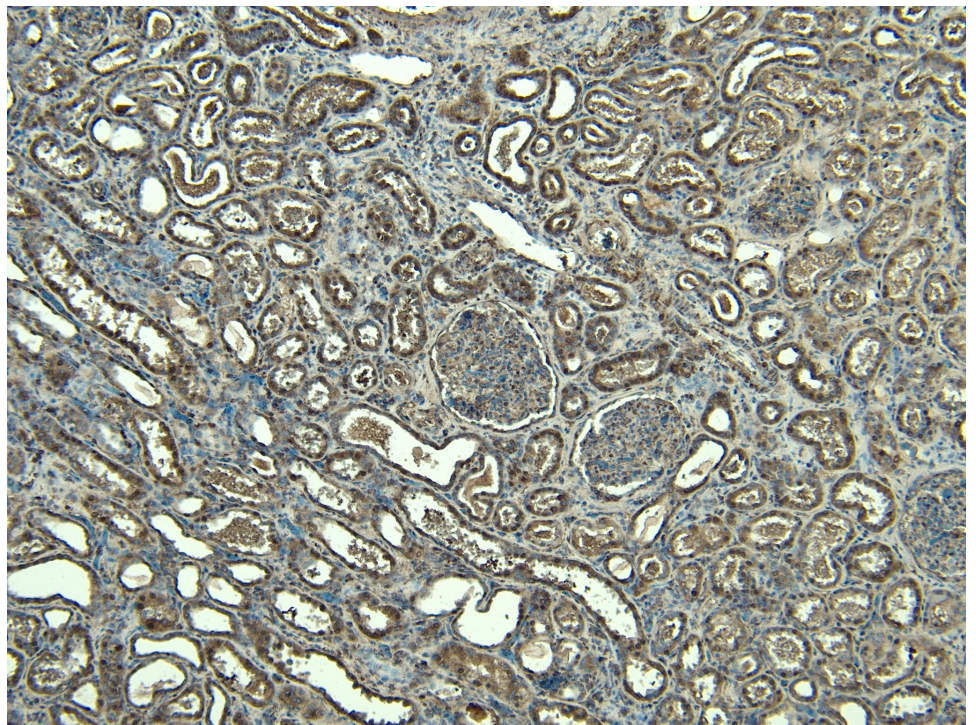
Species Reactivity

Tested: Human

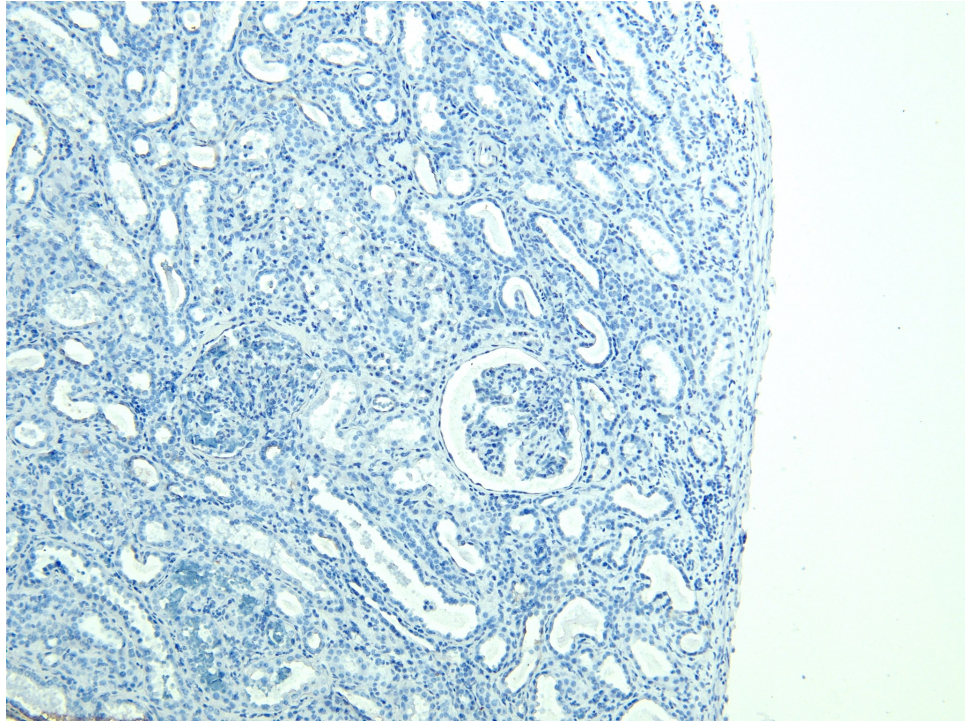
Expected from sequence similarity: Human



B06019 (1 μ g/ml) staining of Human Testes lysate (35 μ g protein in RIPA buffer). Detected by chemiluminescence.



EB06019 (6 μ g/ml) staining of paraffin embedded Human Kidney. Heat induced antigen retrieval with citrate buffer pH 6, HRP-staining.



EB06019 Negative Control showing staining of paraffin embedded Human Kidney, with no primary antibody.