



SZABO SCANDIC

Part of Europa Biosite

Produktinformation



Forschungsprodukte & Biochemikalien



Zellkultur & Verbrauchsmaterial



Diagnostik & molekulare Diagnostik



Laborgeräte & Service

Weitere Information auf den folgenden Seiten!
See the following pages for more information!



Lieferung & Zahlungsart

siehe unsere [Liefer- und Versandbedingungen](#)

Zuschläge

- Mindermengenzuschlag
- Trockeneiszuschlag
- Gefahrgutzuschlag
- Expressversand

SZABO-SCANDIC HandelsgmbH

Quellenstraße 110, A-1100 Wien

T. +43(0)1 489 3961-0

F. +43(0)1 489 3961-7

mail@szabo-scandic.com

www.szabo-scandic.com

[linkedin.com/company/szaboscandic](https://www.linkedin.com/company/szaboscandic) 



UK Office

Everest Biotech Ltd

Cherwell Innovation Centre
77 Heyford Park
Upper Heyford
Oxfordshire
OX25 5HD
UK

Enquiries:

info@everestbiotech.com

Sales:

sales@everestbiotech.com

Tech support:

support@everestbiotech.com

Tel: +44 (0)1869 238326

Fax: +44 (0)1869 238327

US Office

Everest Biotech c/o Abcore

405 Maple Street, Suite A106
Ramona,
CA 92065
USA

Inquiries:

info@everestbiotech.com

Sales:

usasales@everestbiotech.com

Tech support:

support@everestbiotech.com

Tel: 888-320-4628 (toll-free)

Fax: 888-841-9041

www.everestbiotech.com

**Research Use Only. Not for
diagnostic or therapeutic use.**

EB06022 - Goat Anti-FOXL2 / BPES Antibody

Size: 100µg specific antibody in 200µl



Target Protein

Principal Names: FOXL2, BPES, forkhead box L2, PFRK, BPES1, PINTO, forkhead transcription factor FOXL2, blepharophimosis, epicanthus inversus and ptosis, Blepharophimosis, epicanthus inversus, and ptosis 1, POF3

Official Symbol: FOXL2

Accession Number(s): NP_075555.1

Human GeneID(s): [668](#)

Non-Human GeneID(s): 26927 (mouse)

Immunogen

Peptide with sequence C-DSKTGALHSRLDL, from the C Terminus of the protein sequence according to NP_075555.1.

Please note the [peptide](#) is available for sale.

Purification and Storage

Purified from goat serum by ammonium sulphate precipitation followed by antigen affinity chromatography using the immunizing peptide.

Supplied at 0.5 mg/ml in Tris saline, 0.02% sodium azide, pH7.3 with 0.5% bovine serum albumin.

Aliquot and store at -20°C. Minimize freezing and thawing.

Applications Tested

Peptide ELISA: antibody detection limit dilution 1:64000.

Western blot: Approx. 50kDa band observed in Human and Mouse Ovary lysates (calculated MW of 38.8kDa according to Human NP_075555.1 and Mouse NP_036150.1). This molecular weight is observed by other Sources. Recommended concentration 1-3µg/ul. Primary incubation 1 hour at room temperature.

IHC: Paraffin embedded Human Ovary. Recommended concentration: 5µg/ml.

Species Reactivity

Tested: Human, Mouse

Expected from sequence similarity: Human, Mouse, Rat, Cow

Specific Reference

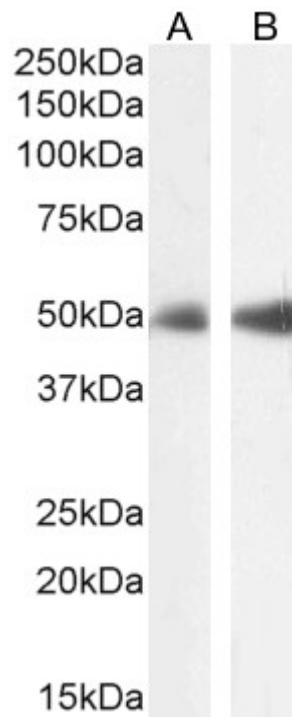
This antibody (previous batch) has been successfully used in IF on Mouse:

Padua MB, Fox SC, Jiang T, Morse DA, Tevosian SG.

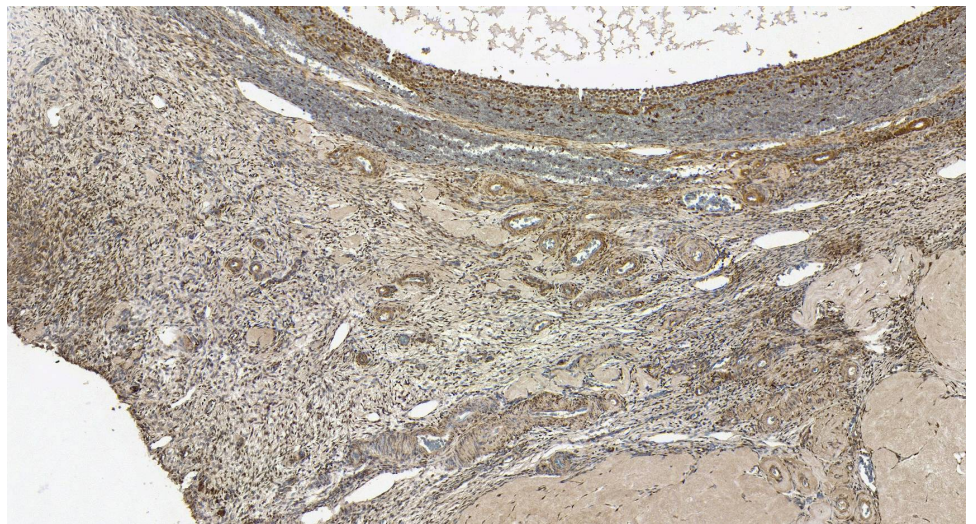
Simultaneous Gene Deletion of Gata4 and Gata6 Leads to Early Disruption of Follicular Development and Germ Cell Loss in the Murine Ovary.

Biol Reprod. 2014 Jun 4.

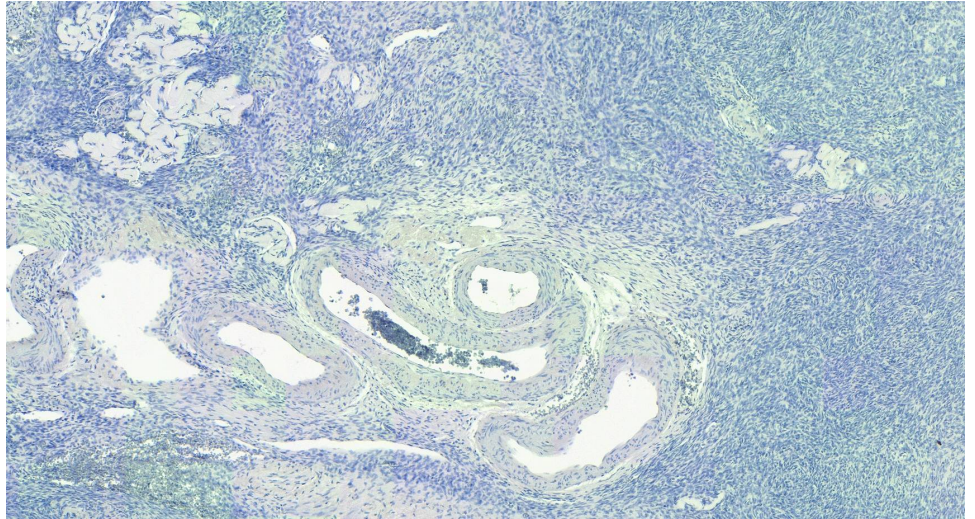
PMID: 24899573



EB06022 (2 μ g/ml) staining of Human (A) and (1 μ g/ml) Mouse (B) Ovary lysate (35 μ g protein in RIPA buffer). Detected by chemiluminescence.



EB06022 (5 μ g/ml) staining of paraffin embedded Human Ovary. Heat induced antigen retrieval with citrate buffer pH 6, HRP-staining.



EB06022 Negative Control showing staining of paraffin embedded Human Ovary, with no primary antibody.