



# SZABO SCANDIC

Part of Europa Biosite

## Produktinformation



Forschungsprodukte & Biochemikalien



Zellkultur & Verbrauchsmaterial



Diagnostik & molekulare Diagnostik



Laborgeräte & Service

Weitere Information auf den folgenden Seiten!  
See the following pages for more information!



### Lieferung & Zahlungsart

siehe unsere [Liefer- und Versandbedingungen](#)

### Zuschläge

- Mindermengenzuschlag
- Trockeneiszuschlag
- Gefahrgutzuschlag
- Expressversand

### SZABO-SCANDIC HandelsgmbH

Quellenstraße 110, A-1100 Wien

T. +43(0)1 489 3961-0

F. +43(0)1 489 3961-7

[mail@szabo-scandic.com](mailto:mail@szabo-scandic.com)

[www.szabo-scandic.com](http://www.szabo-scandic.com)

[linkedin.com/company/szaboscandic](https://www.linkedin.com/company/szaboscandic) 



## UK Office

### Everest Biotech Ltd

Cherwell Innovation Centre  
77 Heyford Park  
Upper Heyford  
Oxfordshire  
OX25 5HD  
UK

Enquiries:

[info@everestbiotech.com](mailto:info@everestbiotech.com)

Sales:

[sales@everestbiotech.com](mailto:sales@everestbiotech.com)

Tech support:

[support@everestbiotech.com](mailto:support@everestbiotech.com)

Tel: +44 (0)1869 238326

Fax: +44 (0)1869 238327

## US Office

### Everest Biotech c/o Abcore

405 Maple Street, Suite A106  
Ramona,  
CA 92065  
USA

Inquiries:

[info@everestbiotech.com](mailto:info@everestbiotech.com)

Sales:

[usasales@everestbiotech.com](mailto:usasales@everestbiotech.com)

Tech support:

[support@everestbiotech.com](mailto:support@everestbiotech.com)

Tel: 888-320-4628 (toll-free)

Fax: 888-841-9041

[www.everestbiotech.com](http://www.everestbiotech.com)

**Research Use Only. Not for  
diagnostic or therapeutic use.**

## EB06037 - Goat Anti-NIPP1 / PPP1R8 Antibody

Size: 100µg specific antibody in 200µl



### Target Protein

**Principal Names:** PPP1R8, NIPP1, protein phosphatase 1, regulatory (inhibitor) subunit 8, ARD1, NIPP-1, PRO2047, ard-1, activator of RNA decay, nuclear subunit of PP-1, homolog of E.coli RNase E, nuclear inhibitor of protein phosphatase-1, protein phosphatase-1, regulatory subunit-8, ARD-1, RNase E, protein phosphatase 1 regulatory inhibitor subunit 8, protein phosphatase 1 regulatory subunit 8

**Official Symbol:** PPP1R8

**Accession Number(s):** NP\_002704.1; NP\_054829.2; NP\_612568.1

**Human GeneID(s):** [5511](#)

**Non-Human GeneID(s):** 100336 (mouse)

**Important Comments:** This antibody is expected to recognise all three human isoforms of this protein.

### Immunogen

Peptide with sequence C-EAWPGKKPTPSLLI, from the C Terminus of the protein sequence according to NP\_002704.1; NP\_054829.2; NP\_612568.1.

Please note the [peptide](#) is available for sale.

### Purification and Storage

Purified from goat serum by ammonium sulphate precipitation followed by antigen affinity chromatography using the immunizing peptide.

Supplied at 0.5 mg/ml in Tris saline, 0.02% sodium azide, pH7.3 with 0.5% bovine serum albumin.

Aliquot and store at -20°C. Minimize freezing and thawing.

### Applications Tested

**Peptide ELISA:** antibody detection limit dilution 1:32000.

**Western blot:** Approx 40kDa band observed in nuclear lysates of cell lines HeLa, HepG2, Jurkat and NIH3T3 (calculated MW of 38.5kDa according to Human NP\_054829.2 and to Mouse NP\_666266.1). Recommended concentration: 0.3-1µg/ml. Primary incubation was 1 hour. Preliminary testing was unsuccessful on Rat Lung for this particular batch.

**IHC:** In paraffin embedded Human Thymus shows speckled staining of nuclei. Recommended concentration: 2.5-3.8µg/ml.

**Additional validation:** This antibody has been successfully used in the following paper: Sikorski et al. (2018) PMID: 30377371.

### Species Reactivity

**Tested:** Human, Mouse

**Expected from sequence similarity:** Human, Mouse, Dog, Cow

### Specific Reference

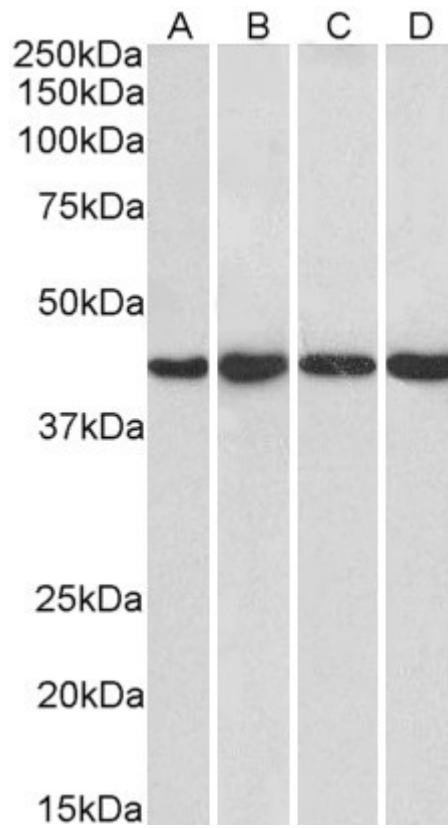
**This antibody has been successfully used in the following paper:**

Krzysztof Sikorski, Adi Mehta, Marit Inngjerdingen, Flourina Thakor, Simon Kling, Tomas Kalina, Tuula A. Nyman, Maria Ekman Stensland, Wei Zhou, Gustavo A. De Souza, Lars Holden, Jan Stuchly, Markus Templin and Fridtjof Lund-Johansen

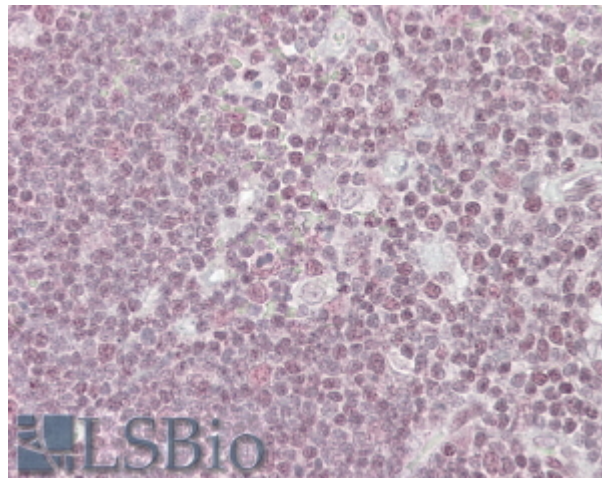
A high-throughput pipeline for validation of antibodies

Nat Methods. 2018 Nov;15(11):909-912

PMID: 30377371



EB06037 (1 $\mu$ g/ml) staining of HeLa (A), HepG2 (B), Jurkat (C) and NIH3T3 (D) nuclear lysate (35 $\mu$ g protein in RIPA buffer). Detected by chemiluminescence.



EB06037 (3.8 $\mu$ g/ml) staining of paraffin embedded Human Thymus. Steamed antigen retrieval with citrate buffer pH 6, AP-staining.