



SZABO SCANDIC

Part of Europa Biosite

Produktinformation



Forschungsprodukte & Biochemikalien



Zellkultur & Verbrauchsmaterial



Diagnostik & molekulare Diagnostik



Laborgeräte & Service

Weitere Information auf den folgenden Seiten!
See the following pages for more information!



Lieferung & Zahlungsart

siehe unsere [Liefer- und Versandbedingungen](#)

Zuschläge

- Mindermengenzuschlag
- Trockeneiszuschlag
- Gefahrgutzuschlag
- Expressversand

SZABO-SCANDIC HandelsgmbH

Quellenstraße 110, A-1100 Wien

T. +43(0)1 489 3961-0

F. +43(0)1 489 3961-7

mail@szabo-scandic.com

www.szabo-scandic.com

[linkedin.com/company/szaboscandic](https://www.linkedin.com/company/szaboscandic) 



UK Office

Everest Biotech Ltd

Cherwell Innovation Centre
77 Heyford Park
Upper Heyford
Oxfordshire
OX25 5HD
UK

Enquiries:

info@everestbiotech.com

Sales:

sales@everestbiotech.com

Tech support:

support@everestbiotech.com

Tel: +44 (0)1869 238326

Fax: +44 (0)1869 238327

US Office

Everest Biotech c/o Abcore

405 Maple Street, Suite A106
Ramona,
CA 92065
USA

Inquiries:

info@everestbiotech.com

Sales:

usasales@everestbiotech.com

Tech support:

support@everestbiotech.com

Tel: 888-320-4628 (toll-free)

Fax: 888-841-9041

www.everestbiotech.com

**Research Use Only. Not for
diagnostic or therapeutic use.**

EB06048 - Goat Anti-FBXL10 / PCCX2 Antibody

Size: 100µg specific antibody in 200µl



Target Protein

Principal Names: KDM2B, lysine (K)-specific demethylase 2B, FBL10, FBXL10, F-box and leucine-rich repeat protein 10, CXXC2, Fbl10, JHDM1B, PCCX2, JEMMA (Jumonji domain, EMSY-interactor, methyltransferase motif) protein, protein containing CXXC domain 2, jumonji C domain-containing histone demethylase 1B

Official Symbol: KDM2B

Accession Number(s): NP_115979.3

Human GeneID(s): [84678](#)

Non-Human GeneID(s): 30841 (mouse), 304495 (rat)

Important Comments: This antibody is expected to recognize isoform a (NP_115979.3) only.

Immunogen

Peptide with sequence C-FGQVEEKLLQKLS, from the C Terminus of the protein sequence according to NP_115979.3.

Please note the [peptide](#) is available for sale.

Purification and Storage

Purified from goat serum by ammonium sulphate precipitation followed by antigen affinity chromatography using the immunizing peptide.

Supplied at 0.5 mg/ml in Tris saline, 0.02% sodium azide, pH7.3 with 0.5% bovine serum albumin.

Aliquot and store at -20°C. Minimize freezing and thawing.

Applications Tested

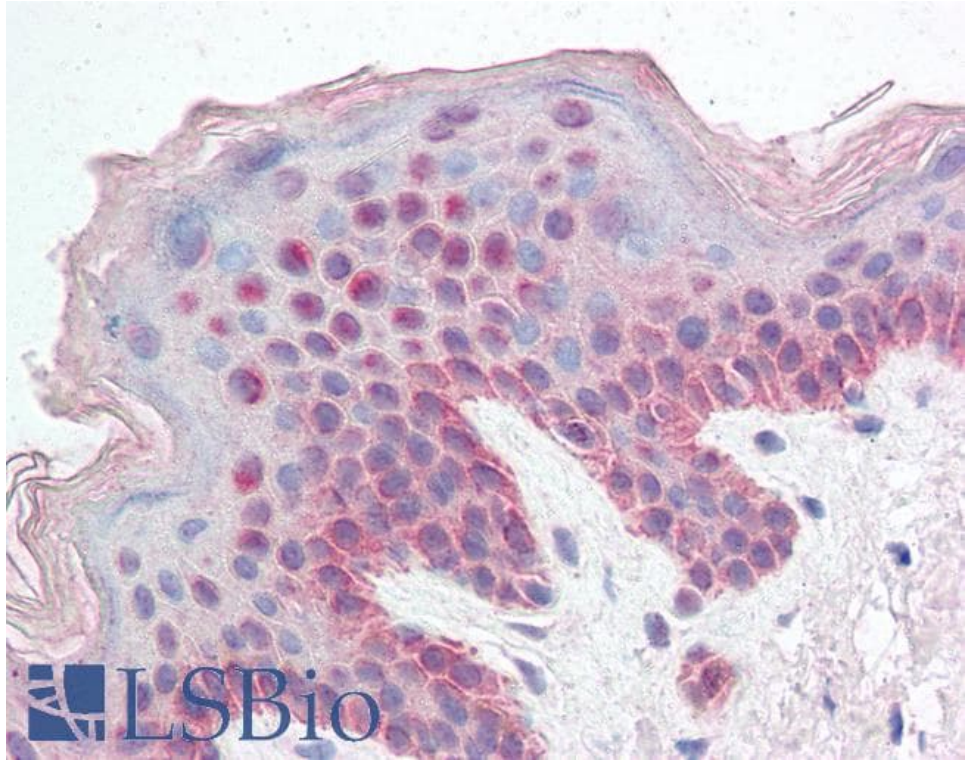
Peptide ELISA: antibody detection limit dilution 1:32000.

IHC: Paraffin embedded Human Skin. Recommended concentration: 5-7µg/ml.

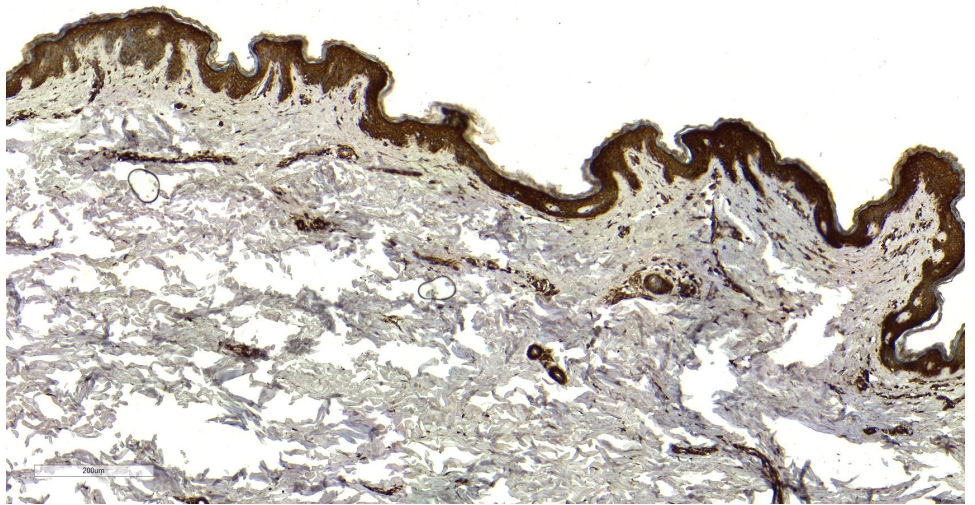
Species Reactivity

Tested: Human

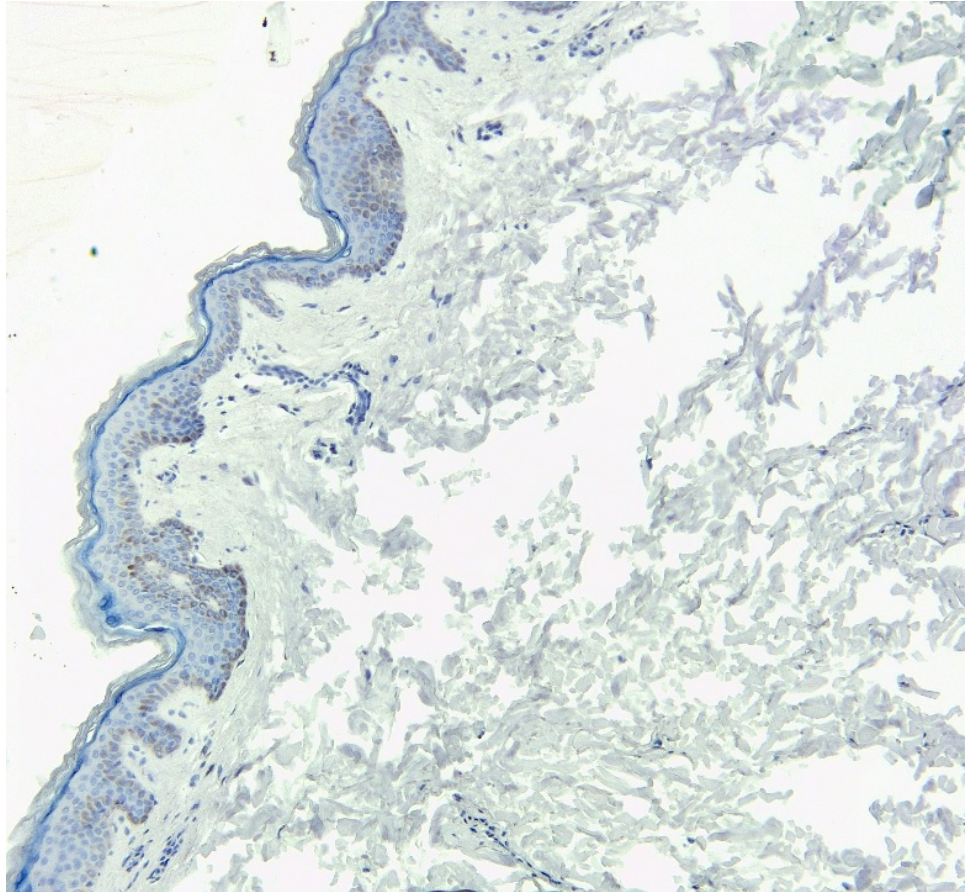
Expected from sequence similarity: Human, Mouse, Rat, Dog



EB06048 (5µg/ml) staining of paraffin embedded Human Skin. Steamed antigen retrieval with citrate buffer pH 6, AP-staining.



EB06048 (7µg/ml) staining of paraffin embedded Human Skin. Heat induced antigen retrieval with citrate buffer pH 6, HRP-staining.



EB06048 Negative Control showing staining of paraffin embedded Human Skin, with no primary antibody.