



# SZABO SCANDIC

Part of Europa Biosite

## Produktinformation



Forschungsprodukte & Biochemikalien



Zellkultur & Verbrauchsmaterial



Diagnostik & molekulare Diagnostik



Laborgeräte & Service

Weitere Information auf den folgenden Seiten!  
See the following pages for more information!



### Lieferung & Zahlungsart

siehe unsere [Liefer- und Versandbedingungen](#)

### Zuschläge

- Mindermengenzuschlag
- Trockeneiszuschlag
- Gefahrgutzuschlag
- Expressversand

### SZABO-SCANDIC HandelsgmbH

Quellenstraße 110, A-1100 Wien

T. +43(0)1 489 3961-0

F. +43(0)1 489 3961-7

[mail@szabo-scandic.com](mailto:mail@szabo-scandic.com)

[www.szabo-scandic.com](http://www.szabo-scandic.com)

[linkedin.com/company/szaboscandic](https://www.linkedin.com/company/szaboscandic) 

## UK Office

### Everest Biotech Ltd

Cherwell Innovation Centre  
77 Heyford Park  
Upper Heyford  
Oxfordshire  
OX25 5HD  
UK

Enquiries:

[info@everestbiotech.com](mailto:info@everestbiotech.com)

Sales:

[sales@everestbiotech.com](mailto:sales@everestbiotech.com)

Tech support:

[support@everestbiotech.com](mailto:support@everestbiotech.com)

Tel: +44 (0)1869 238326

Fax: +44 (0)1869 238327

## US Office

### Everest Biotech c/o Abcore

405 Maple Street, Suite A106  
Ramona,  
CA 92065  
USA

Inquiries:

[info@everestbiotech.com](mailto:info@everestbiotech.com)

Sales:

[usasales@everestbiotech.com](mailto:usasales@everestbiotech.com)

Tech support:

[support@everestbiotech.com](mailto:support@everestbiotech.com)

Tel: 888-320-4628 (toll-free)

Fax: 888-841-9041

[www.everestbiotech.com](http://www.everestbiotech.com)

**Research Use Only. Not for  
diagnostic or therapeutic use.**

## EB06054 - Goat Anti-BAF57 / SMARCE1 Antibody

Size: 100µg specific antibody in 200µl



### Target Protein

**Principal Names:** SMARCE1, BAF57, SWI/SNF related, matrix associated, actin dependent regulator of chromatin, subfamily e, member 1, mammalian chromatin remodeling complex BRG1-associated factor 57, BAF57, SWI/SNF-related matrix-associated actin-dependent regulator of chromatin e1

**Official Symbol:** SMARCE1

**Accession Number(s):** NP\_003070.3

**Human GeneID(s):** [6605](#)

**Non-Human GeneID(s):** 57376 (mouse)

### Immunogen

Peptide with sequence C-PPTDPIPEDEKKE, from the C Terminus of the protein sequence according to NP\_003070.3.

Please note the [peptide](#) is available for sale.

### Purification and Storage

Purified from goat serum by ammonium sulphate precipitation followed by antigen affinity chromatography using the immunizing peptide.

Supplied at 0.5 mg/ml in Tris saline, 0.02% sodium azide, pH7.3 with 0.5% bovine serum albumin.

Aliquot and store at -20°C. Minimize freezing and thawing.

### Applications Tested

**Peptide ELISA:** antibody detection limit dilution 1:16000.

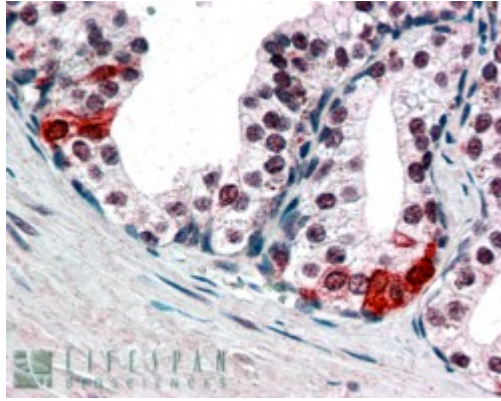
**Western blot:** Approx 50kDa band observed in lysates of cell lines HEPG2, HeLa and Jurkat (calculated MW of 46.6kDa according to NP\_003070.3). A 48kDa band was observed in transfected HEK293 transiently expressing BAF57. This band is not observed in the non-transfected HEK293. Recommended concentration: 0.2-0.6 µg/ml. Full caption: A) HEK293 overexpressing BAF57 (RC209444) and probed with EB06054 (mock transfection in first lane), tested by Origene. B) EB06054 staining (0.2µg/ml) of Jurkat lysate (RIPA buffer, 35µg total protein per lane). Primary incubated for 1 hour. Detected by western blot using chemiluminescence.

**IHC:** In paraffin embedded Human Prostate shows nuclear staining in secretory epithelial cells. Recommended concentration, 3-5µg/ml.

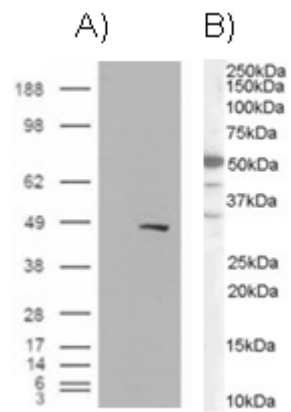
### Species Reactivity

**Tested:** Human

**Expected from sequence similarity:** Human, Mouse



In paraffin embedded Human Prostate shows nuclear staining in secretory epithelial cells. Recommended concentration, 3-5 $\mu$ g/ml.



A) HEK293 overexpressing BAF57 (RC209444) and probed with EB06054 (mock transfection in first lane), tested by Origene. B) see Western Blot.