



SZABO SCANDIC

Part of Europa Biosite

Produktinformation



Forschungsprodukte & Biochemikalien



Zellkultur & Verbrauchsmaterial



Diagnostik & molekulare Diagnostik



Laborgeräte & Service

Weitere Information auf den folgenden Seiten!
See the following pages for more information!



Lieferung & Zahlungsart

siehe unsere [Liefer- und Versandbedingungen](#)

Zuschläge

- Mindermengenzuschlag
- Trockeneiszuschlag
- Gefahrgutzuschlag
- Expressversand

SZABO-SCANDIC HandelsgmbH

Quellenstraße 110, A-1100 Wien

T. +43(0)1 489 3961-0

F. +43(0)1 489 3961-7

mail@szabo-scandic.com

www.szabo-scandic.com

[linkedin.com/company/szaboscandic](https://www.linkedin.com/company/szaboscandic) 

UK Office

Everest Biotech Ltd

Cherwell Innovation Centre
77 Heyford Park
Upper Heyford
Oxfordshire
OX25 5HD
UK

Enquiries:

info@everestbiotech.com

Sales:

sales@everestbiotech.com

Tech support:

support@everestbiotech.com

Tel: +44 (0)1869 238326

Fax: +44 (0)1869 238327

US Office

Everest Biotech c/o Abcore

405 Maple Street, Suite A106
Ramona,
CA 92065
USA

Inquiries:

info@everestbiotech.com

Sales:

usasales@everestbiotech.com

Tech support:

support@everestbiotech.com

Tel: 888-320-4628 (toll-free)

Fax: 888-841-9041

www.everestbiotech.com

**Research Use Only. Not for
diagnostic or therapeutic use.**

EB06057 - Goat Anti-Coronin 1 / TACO Antibody

Size: 100µg specific antibody in 200µl



Target Protein

Principal Names: CORO1A, Coronin 1, TACO, p57, CLABP, HCORO1, CLIPINA, Clabp
TACO, coronin, actin binding protein, 1A, coronin-1, coronin, actin-binding, 1A, coronin,
actin-binding protein, 1A, FLJ41407, MGC117380

Official Symbol: CORO1A

Accession Number(s): NP_009005.1

Human GeneID(s): [11151](#)

Non-Human GeneID(s): 12721 (mouse), 155151 (rat)

Immunogen

Peptide with sequence C-KRLDRLEETVQAK, from the C Terminus of the protein
sequence according to NP_009005.1.

Please note the [peptide](#) is available for sale.

Purification and Storage

Purified from goat serum by ammonium sulphate precipitation followed by antigen affinity
chromatography using the immunizing peptide.

Supplied at 0.5 mg/ml in Tris saline, 0.02% sodium azide, pH7.3 with 0.5% bovine serum
albumin.

Aliquot and store at -20°C. Minimize freezing and thawing.

Applications Tested

Peptide ELISA: antibody detection limit dilution 1:16000.

Western blot: Approx 60kDa band observed in lysates of cell lines Daudi, Jurkat and
MOLT4 and approx. 55kDa in Human Lymph node and Spleen lysates (calculated MW of
51.0kDa according to Human NP_009005.1). These molecular weights are routinely
observed by other sources. Recommended concentration: 0.3-1µg/ml. Primary incubation
1 hour at room temperature.

IHC: Paraffin embedded Human Spleen and Small Intestine. Recommended
concentration: 3.75µg/ml.

Flow Cytometry: Flow cytometric analysis of Jurkat cells. Recommended concentration:
10ug/ml.

Species Reactivity

Tested: Human

Expected from sequence similarity: Human, Mouse, Rat, Dog, Cow

Specific Reference

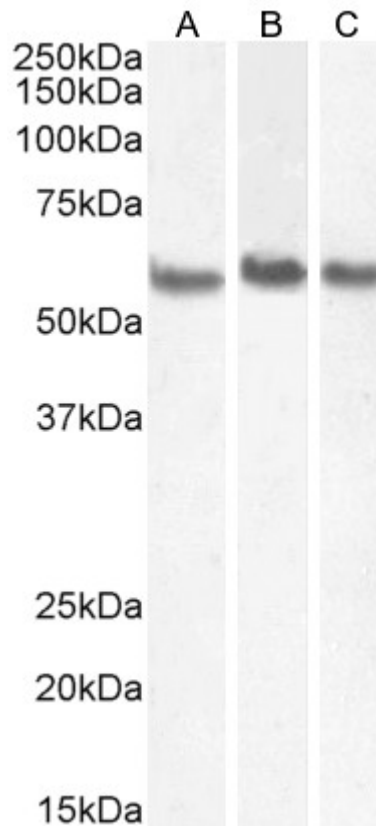
This antibody (previous batch) has been successfully used in WB on Mouse:

Honoré B, Buus S, Claesson MH.

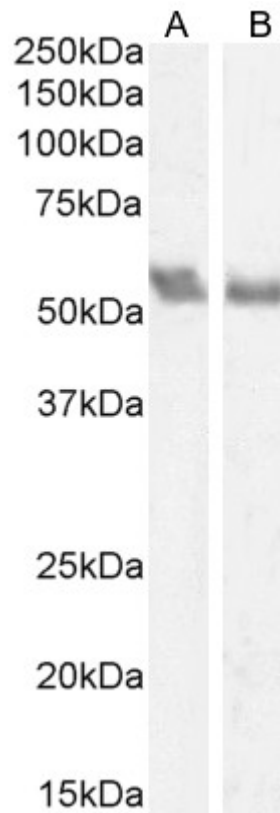
Identification of differentially expressed proteins in spontaneous thymic lymphomas from
knockout mice with deletion of p53.

Proteome Sci. 2008 Jun 10;6:18.

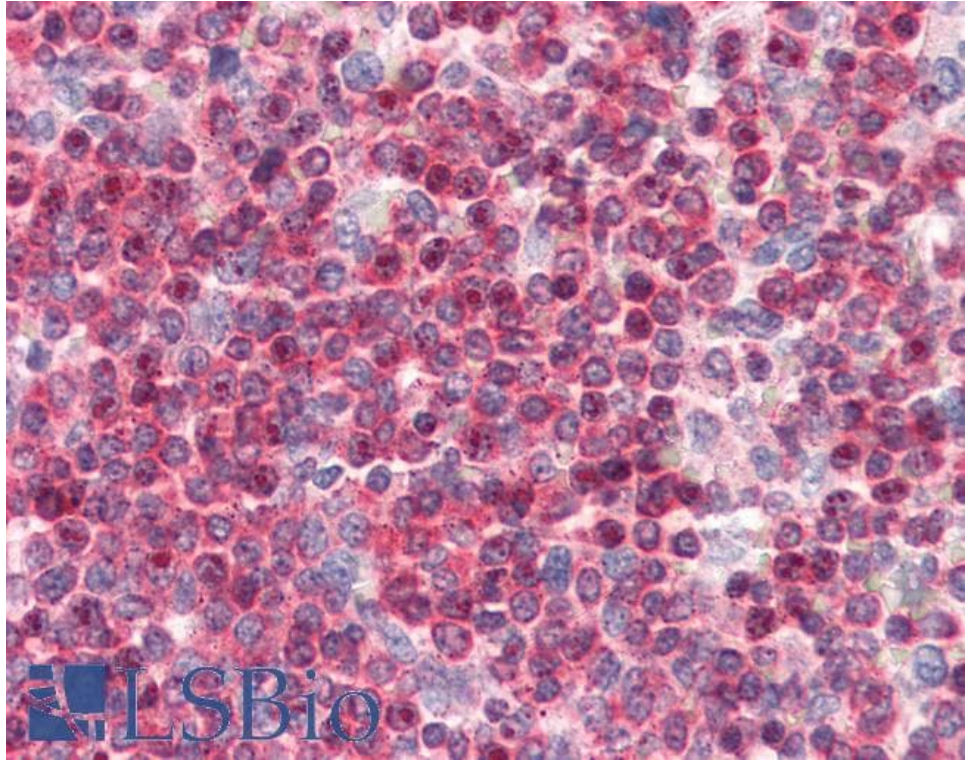
PMID: 18544163



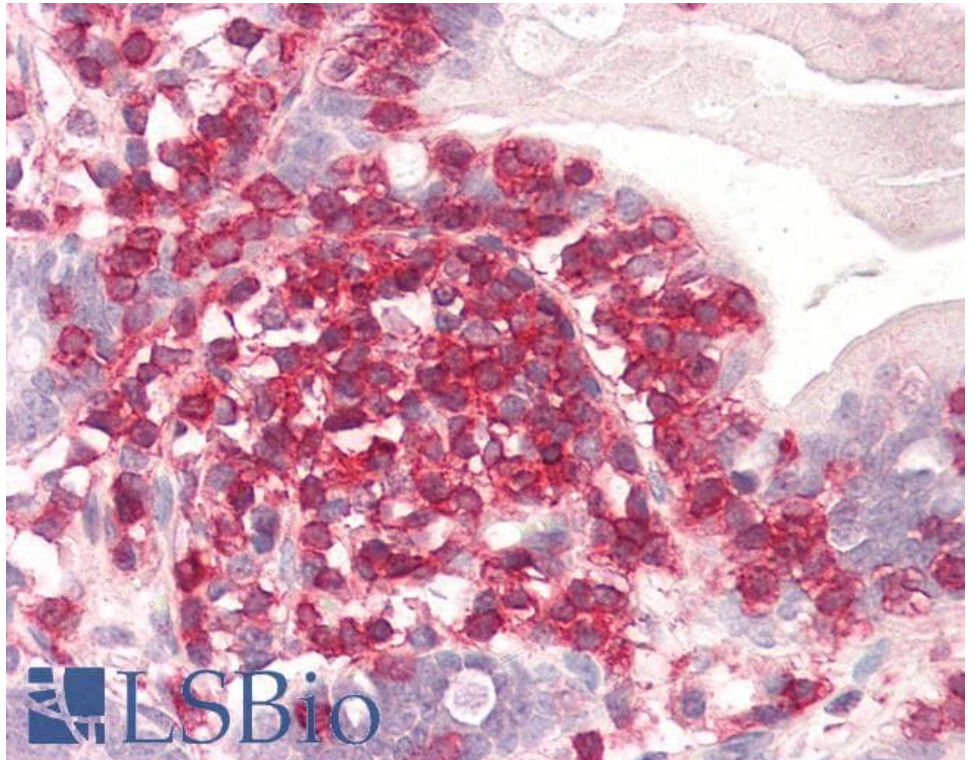
EB06057 (0.5 μ g/ml) staining of Daudi (A), MOLT4 (B) and (1 μ g/ml) of Jurkat (C) cell lysate (35 μ g protein in RIPA buffer). Detected by chemiluminescence.



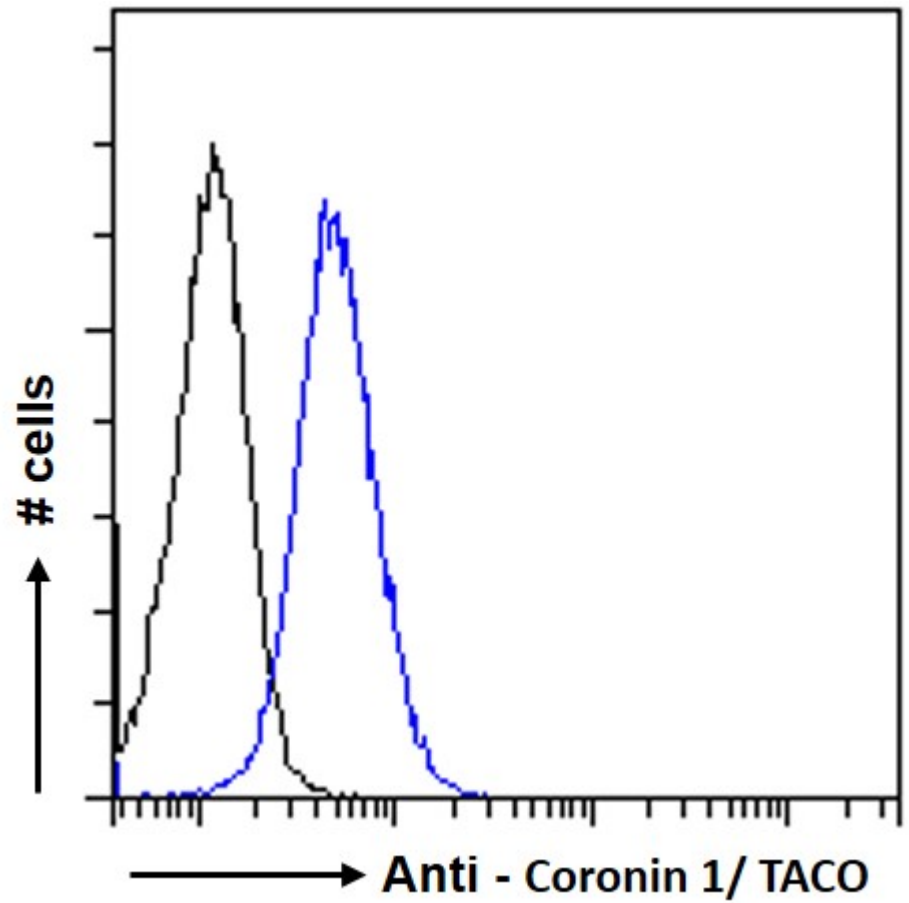
EB06057 (0.5 μ g/ml) staining of Human Lymph node (A) and Spleen (B) lysate (35 μ g protein in RIPA buffer). Detected by chemiluminescence.



EB06057 (3.75µg/ml) staining of paraffin embedded Human Spleen. Steamed antigen retrieval with citrate buffer pH 6, AP-staining.



EB06057 (3.75µg/ml) staining of paraffin embedded Human Small Intestine. Steamed antigen retrieval with citrate buffer pH 6, AP-staining.



EB06057 Flow cytometric analysis of paraformaldehyde fixed Jurkat cells (blue line), permeabilized with 0.5% Triton. Primary incubation 1hr (10ug/ml) followed by Alexa Fluor 488 secondary antibody (1ug/ml). IgG control: Unimmunized goat IgG (black line) followed by Alexa Fluor 488 secondary antibody.