



SZABO SCANDIC

Part of Europa Biosite

Produktinformation



Forschungsprodukte & Biochemikalien



Zellkultur & Verbrauchsmaterial



Diagnostik & molekulare Diagnostik



Laborgeräte & Service

Weitere Information auf den folgenden Seiten!
See the following pages for more information!



Lieferung & Zahlungsart

siehe unsere [Liefer- und Versandbedingungen](#)

Zuschläge

- Mindermengenzuschlag
- Trockeneiszuschlag
- Gefahrgutzuschlag
- Expressversand

SZABO-SCANDIC HandelsgmbH

Quellenstraße 110, A-1100 Wien

T. +43(0)1 489 3961-0

F. +43(0)1 489 3961-7

mail@szabo-scandic.com

www.szabo-scandic.com

[linkedin.com/company/szaboscandic](https://www.linkedin.com/company/szaboscandic) 



UK Office

Everest Biotech Ltd

Cherwell Innovation Centre
77 Heyford Park
Upper Heyford
Oxfordshire
OX25 5HD
UK

Enquiries:

info@everestbiotech.com

Sales:

sales@everestbiotech.com

Tech support:

support@everestbiotech.com

Tel: +44 (0)1869 238326

Fax: +44 (0)1869 238327

US Office

Everest Biotech c/o Abcore

405 Maple Street, Suite A106
Ramona,
CA 92065
USA

Inquiries:

info@everestbiotech.com

Sales:

usasales@everestbiotech.com

Tech support:

support@everestbiotech.com

Tel: 888-320-4628 (toll-free)

Fax: 888-841-9041

www.everestbiotech.com

**Research Use Only. Not for
diagnostic or therapeutic use.**

EB06064 - Goat Anti-FBXW2 Antibody

Size: 100µg specific antibody in 200µl



Target Protein

Principal Names: FBXW2, F-box and WD-40 domain protein 2, FBW2, Fwd2, MGC117371, Md6, F-box protein Fbw2, F-box and WD repeat domain containing 2

Official Symbol: FBXW2

Accession Number(s): NP_036296.2

Human GeneID(s): [26190](#)

Immunogen

Peptide with sequence C-KRGSSFLAGEHPG, from the C Terminus of the protein sequence according to NP_036296.2.

Please note the [peptide](#) is available for sale.

Purification and Storage

Purified from goat serum by ammonium sulphate precipitation followed by antigen affinity chromatography using the immunizing peptide.

Supplied at 0.5 mg/ml in Tris saline, 0.02% sodium azide, pH7.3 with 0.5% bovine serum albumin.

Aliquot and store at -20°C. Minimize freezing and thawing.

Applications Tested

Peptide ELISA: antibody detection limit dilution 1:128000.

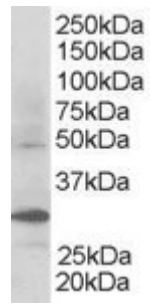
Western blot: Approx 48kDa band observed in Human Kidney lysates (calculated MW of 48.0kDa according to NP_036296.1). Recommended concentration: 0.3-1.5µg/ml. A stronger band of unknown identity was also consistently observed at appr. 30kDa - both bands were successfully blocked by incubation with the immunising peptide.

IHC: In paraffin embedded Human Kidney, shows cytoplasmic staining of epithelial cells in some renal tubules. Recommended concentration, 2-3µg/ml. An anonymous customer found positive results in IHC on Mouse kidney tissue. An anonymous customer found positive results in IHC on Rat kidney tissue.

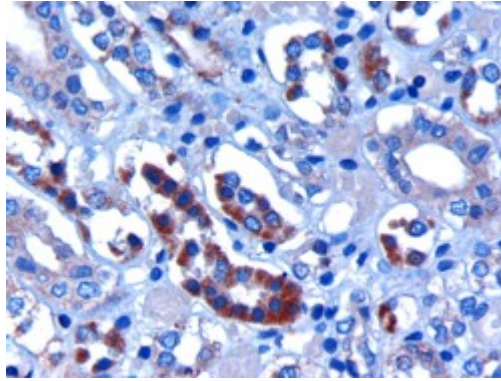
Species Reactivity

Tested: Human, Mouse, Rat

Expected from sequence similarity: Human, Mouse, Rat, Dog, Pig, Cow



EB06064 staining (0.3 μ g/ml) of Human Kidney lysate (RIPA buffer, 30 μ g total protein per lane). Primary incubated for 1 hour. Detected by western blot using chemiluminescence.



EB06064 (3 μ g/ml) staining of paraffin embedded Human Kidney. Microwaved antigen retrieval with citrate buffer pH 6, HRP-staining.