



SZABO SCANDIC

Part of Europa Biosite

Produktinformation



Forschungsprodukte & Biochemikalien



Zellkultur & Verbrauchsmaterial



Diagnostik & molekulare Diagnostik



Laborgeräte & Service

Weitere Information auf den folgenden Seiten!
See the following pages for more information!



Lieferung & Zahlungsart

siehe unsere [Liefer- und Versandbedingungen](#)

Zuschläge

- Mindermengenzuschlag
- Trockeneiszuschlag
- Gefahrgutzuschlag
- Expressversand

SZABO-SCANDIC HandelsgmbH

Quellenstraße 110, A-1100 Wien

T. +43(0)1 489 3961-0

F. +43(0)1 489 3961-7

mail@szabo-scandic.com

www.szabo-scandic.com

[linkedin.com/company/szaboscandic](https://www.linkedin.com/company/szaboscandic) 



UK Office

Everest Biotech Ltd

Cherwell Innovation Centre
77 Heyford Park
Upper Heyford
Oxfordshire
OX25 5HD
UK

Enquiries:

info@everestbiotech.com

Sales:

sales@everestbiotech.com

Tech support:

support@everestbiotech.com

Tel: +44 (0)1869 238326

Fax: +44 (0)1869 238327

US Office

Everest Biotech c/o Abcore

405 Maple Street, Suite A106
Ramona,
CA 92065
USA

Inquiries:

info@everestbiotech.com

Sales:

usasales@everestbiotech.com

Tech support:

support@everestbiotech.com

Tel: 888-320-4628 (toll-free)

Fax: 888-841-9041

www.everestbiotech.com

**Research Use Only. Not for
diagnostic or therapeutic use.**

EB06079 - Goat Anti-MRG15 / MORF4L1 Antibody

Size: 100µg specific antibody in 200µl



Target Protein

Principal Names: MORF4L1, MRG15, MORF-related gene 15 protein, mortality factor 4 like 1, Eaf3, FWP006, HsT17725, MEAF3, MGC10631, MORFRG15, Esa1p-associated factor 3 homolog, MORF-related gene on chromosome 15, protein MSL3-1, S863-6, transcription factor-like protein MRG15

Official Symbol: MORF4L1

Accession Number(s): NP_006782.1; NP_996670.1

Human GeneID(s): [10933](#)

Non-Human GeneID(s): 21761 (mouse)

Important Comments: This antibody is expected to recognise isoform 1 (NP_006782.1) and isoform 2 (NP_996670.1).

Immunogen

Peptide with sequence APKQDPKPKFQEG-C, from the N Terminus of the protein sequence according to NP_006782.1; NP_996670.1.

Please note the [peptide](#) is available for sale.

Purification and Storage

Purified from goat serum by ammonium sulphate precipitation followed by antigen affinity chromatography using the immunizing peptide.

Supplied at 0.5 mg/ml in Tris saline, 0.02% sodium azide, pH7.3 with 0.5% bovine serum albumin.

Aliquot and store at -20°C. Minimize freezing and thawing.

Applications Tested

Peptide ELISA: antibody detection limit dilution 1:128000.

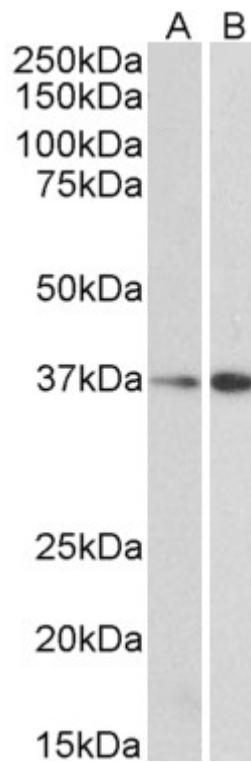
Western blot: Approx 37kDa band observed in nuclear lysates of cell lines HepG2 and NIH3T3 and approx 40kDa band observed in Mouse, Rat and Pig Liver lysates (calculated MW of 37.2kDa according to Human NP_006782.1, Mouse NP_077751.1, Rat NP_001011999.1 and Pig XP_001927776.1 and 41.5kDa according to Human NP_996670.1, Mouse NP_001034236.1 and Pig XP_001927789.1). Recommended concentration: 0.1-0.3µg/ml.

IHC: Paraffin embedded Human Kidney and Testis. Recommended concentration: 4-6µg/ml.

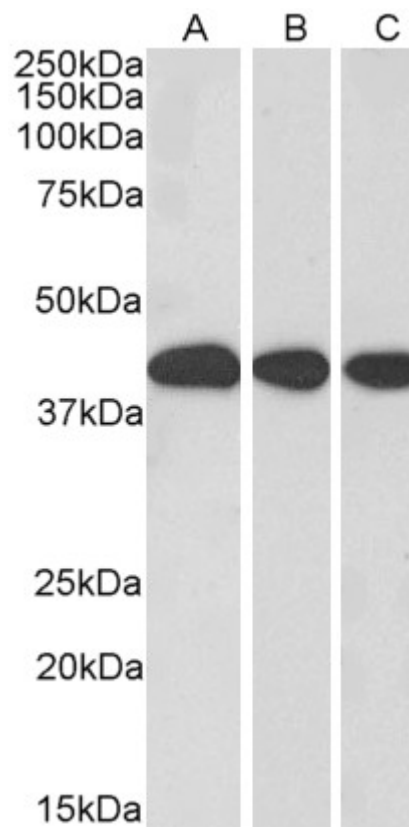
Species Reactivity

Tested: Human, Mouse, Rat, Pig

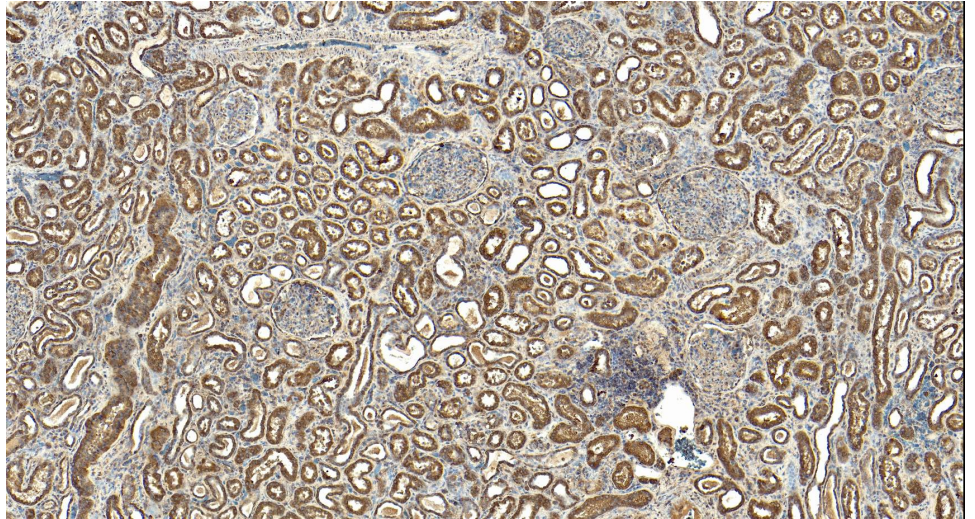
Expected from sequence similarity: Human, Mouse, Rat, Pig, Cow



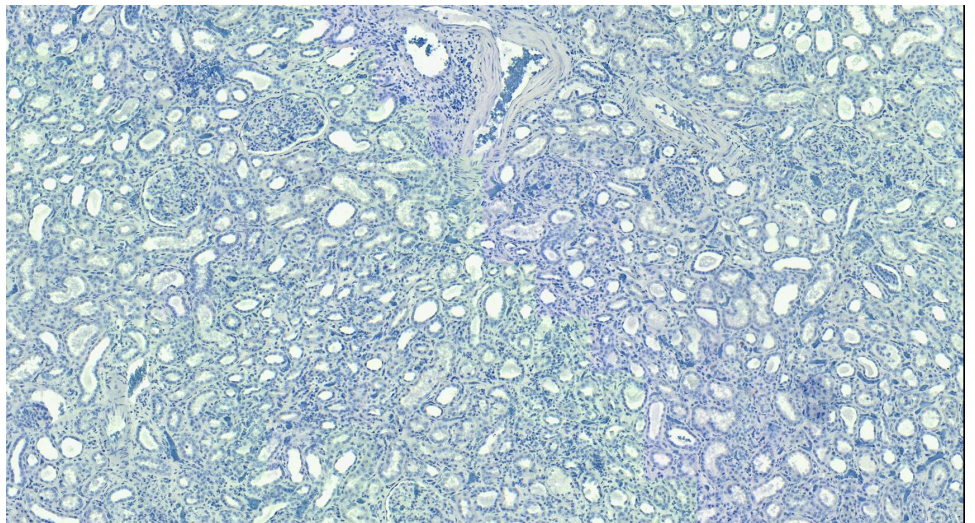
EB06079 (0.3 μ g/ml) staining of NIH3T3 (A) and HepG2 (B) lysate (35 μ g protein in RIPA buffer). Primary incubation was 1 hour. Detected by chemiluminescence



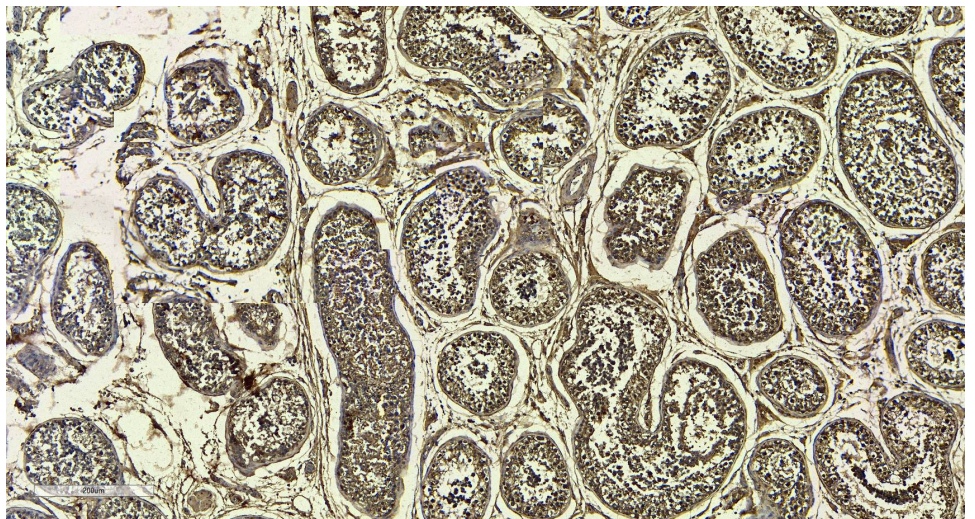
EB06079 (0.3 μ g/ml) staining of Mouse Liver (A), Rat Liver (B) and Pig Liver (C) lysate (35 μ g protein in RIPA buffer). Primary incubation was 1 hour. Detected by chemiluminescence



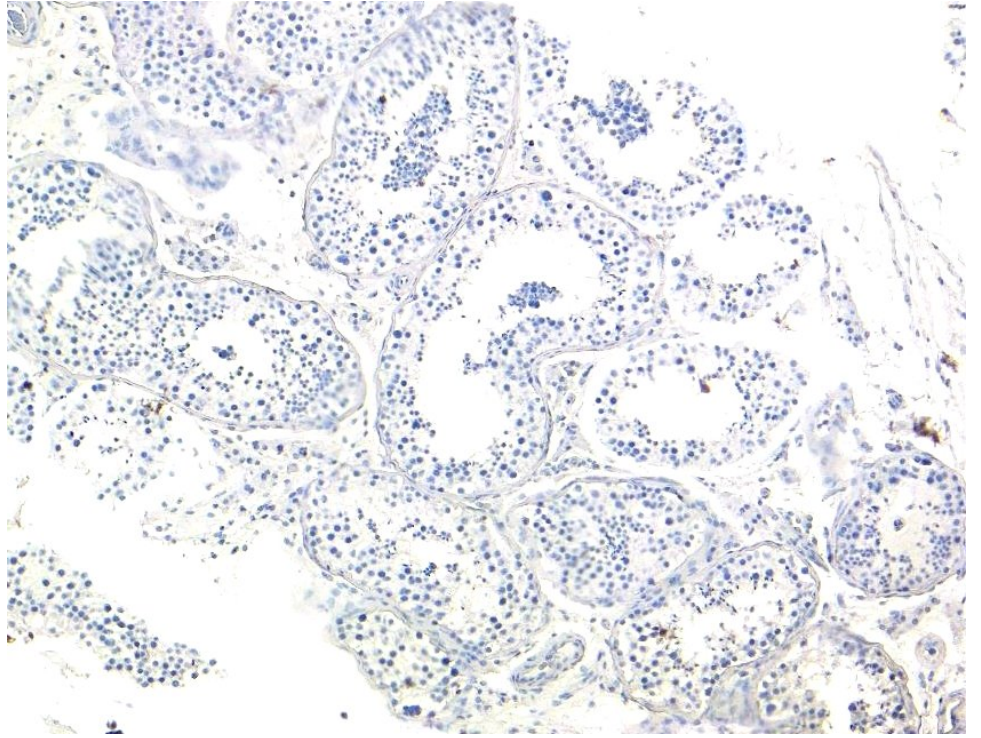
EB06079 (5 μ g/ml) staining of paraffin embedded Human Kidney. Heat induced antigen retrieval with citrate buffer pH 6, HRP-staining.



EB06079 Negative Control showing staining of paraffin embedded Human Kidney, with no primary antibody.



EB06079 (5 μ g/ml) staining of paraffin embedded Human Testis. Heat induced antigen retrieval with citrate buffer pH 6, HRP-staining.



EB06079 Negative Control showing staining of paraffin embedded Human Testis, with no primary antibody.