



SZABO SCANDIC

Part of Europa Biosite

Produktinformation



Forschungsprodukte & Biochemikalien



Zellkultur & Verbrauchsmaterial



Diagnostik & molekulare Diagnostik



Laborgeräte & Service

Weitere Information auf den folgenden Seiten!
See the following pages for more information!



Lieferung & Zahlungsart

siehe unsere [Liefer- und Versandbedingungen](#)

Zuschläge

- Mindermengenzuschlag
- Trockeneiszuschlag
- Gefahrgutzuschlag
- Expressversand

SZABO-SCANDIC HandelsgmbH

Quellenstraße 110, A-1100 Wien

T. +43(0)1 489 3961-0

F. +43(0)1 489 3961-7

mail@szabo-scandic.com

www.szabo-scandic.com

[linkedin.com/company/szaboscandic](https://www.linkedin.com/company/szaboscandic) 



UK Office

Everest Biotech Ltd

Cherwell Innovation Centre
77 Heyford Park
Upper Heyford
Oxfordshire
OX25 5HD
UK

Enquiries:

info@everestbiotech.com

Sales:

sales@everestbiotech.com

Tech support:

support@everestbiotech.com

Tel: +44 (0)1869 238326

Fax: +44 (0)1869 238327

US Office

Everest Biotech c/o Abcore

405 Maple Street, Suite A106
Ramona,
CA 92065
USA

Inquiries:

info@everestbiotech.com

Sales:

usasales@everestbiotech.com

Tech support:

support@everestbiotech.com

Tel: 888-320-4628 (toll-free)

Fax: 888-841-9041

www.everestbiotech.com

**Research Use Only. Not for
diagnostic or therapeutic use.**

EB06107 - Goat Anti-ARHGEF4 Antibody

Size: 100µg specific antibody in 200µl



Target Protein

Principal Names: ARHGEF4, Rho guanine nucleotide exchange factor (GEF) 4, ASEF, GEF4, STM6, KIAA1112, DKFZp434G2016, APC-stimulated guanine nucleotide exchange factor, ASEF1, Rho guanine nucleotide exchange factor 4

Official Symbol: ARHGEF4

Accession Number(s): NP_056135.2; NP_127462.1

Human GeneID(s): [50649](#)

Important Comments: This antibody is expected to recognise both reported isoforms (NP_056135.2; NP_127462.1).

Immunogen

Peptide with sequence PWEEPAGEKPCS, from the N Terminus of the protein sequence according to NP_056135.2; NP_127462.1.

Please note the [peptide](#) is available for sale.

Purification and Storage

Purified from goat serum by ammonium sulphate precipitation followed by antigen affinity chromatography using the immunizing peptide.

Supplied at 0.5 mg/ml in Tris saline, 0.02% sodium azide, pH7.3 with 0.5% bovine serum albumin.

Aliquot and store at -20°C. Minimize freezing and thawing.

Applications Tested

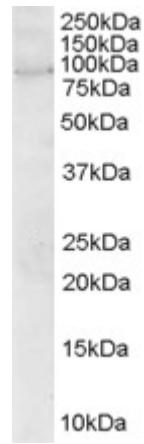
Peptide ELISA: antibody detection limit dilution 1:32000.

Western blot: Approx 80kDa band observed in Human Brain lysates and in transfected HEK293 transiently expressing ARHGEF4 (calculated MW of 79.1kDa according to NP_056135.2 and 76.4kDa according to 127462.1). Recommended concentration: 2-4µg/ml.

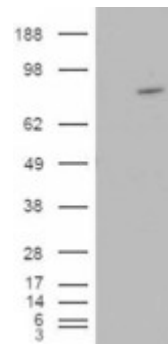
Species Reactivity

Tested: Human

Expected from sequence similarity: Human



EB06107 (2 μ g/ml) staining of Human Brain lysate (35 μ g protein in RIPA buffer). Primary incubation was 1 hour. Detected by chemiluminescence.



HEK293 overexpressing ARHGEF4 (RC215591) and probed with EB06107 (mock transfection in first lane), tested by Origene.