



SZABO SCANDIC

Part of Europa Biosite

Produktinformation



Forschungsprodukte & Biochemikalien



Zellkultur & Verbrauchsmaterial



Diagnostik & molekulare Diagnostik



Laborgeräte & Service

Weitere Information auf den folgenden Seiten!
See the following pages for more information!



Lieferung & Zahlungsart

siehe unsere [Liefer- und Versandbedingungen](#)

Zuschläge

- Mindermengenzuschlag
- Trockeneiszuschlag
- Gefahrgutzuschlag
- Expressversand

SZABO-SCANDIC HandelsgmbH

Quellenstraße 110, A-1100 Wien

T. +43(0)1 489 3961-0

F. +43(0)1 489 3961-7

mail@szabo-scandic.com

www.szabo-scandic.com

[linkedin.com/company/szaboscandic](https://www.linkedin.com/company/szaboscandic) 



UK Office

Everest Biotech Ltd

Cherwell Innovation Centre
77 Heyford Park
Upper Heyford
Oxfordshire
OX25 5HD
UK

Enquiries:

info@everestbiotech.com

Sales:

sales@everestbiotech.com

Tech support:

support@everestbiotech.com

Tel: +44 (0)1869 238326

Fax: +44 (0)1869 238327

US Office

Everest Biotech c/o Abcore

405 Maple Street, Suite A106
Ramona,
CA 92065
USA

Inquiries:

info@everestbiotech.com

Sales:

usasales@everestbiotech.com

Tech support:

support@everestbiotech.com

Tel: 888-320-4628 (toll-free)

Fax: 888-841-9041

www.everestbiotech.com

**Research Use Only. Not for
diagnostic or therapeutic use.**

EB06118 - Goat Anti-ATP6IP2 / Renin receptor Antibody

Size: 100µg specific antibody in 200µl



Target Protein

Principal Names: ATP6AP2, ATP6IP2, ATPase, H⁺ transporting, lysosomal interacting protein 2, M8-9, APT6M8-9, ATP6M8-9, renin receptor, V-ATPase M8.9 subunit, ATPase membrane sector associated protein M8-9, vacuolar ATP synthase membrane sector associated protein M8-9, ATPase, H⁺ transporting, lysosomal (vacuolar proton pump) membrane sector associated protein M8-9, ELDF10, HT028, MGC99577, MRXE, MSTP009, XMRE, ATPase, H⁺ transporting, lysosomal interacting protein 2, embryonic liver differentiation factor 10

Official Symbol: ATP6AP2

Accession Number(s): NP_005756.2

Human GeneID(s): [10159](#)

Non-Human GeneID(s): 70495 (mouse)

Immunogen

Peptide with sequence C-SIIYRMTNQKIRMD, from the C Terminus of the protein sequence according to NP_005756.2.

Please note the [peptide](#) is available for sale.

Purification and Storage

Purified from goat serum by ammonium sulphate precipitation followed by antigen affinity chromatography using the immunizing peptide.

Supplied at 0.5 mg/ml in Tris saline, 0.02% sodium azide, pH7.3 with 0.5% bovine serum albumin.

Aliquot and store at -20°C. Minimize freezing and thawing.

Applications Tested

Peptide ELISA: antibody detection limit dilution 1:8000.

Western blot: Approx 38-39kDa band observed in Human Cerebellum and in Human and Rat Heart lysates (calculated MW of 39.0kDa according to Human NP_005756.2 and Rat NP_001007092.1). Recommended concentration 0.3-1µg/ml. Primary incubation 1 hour at room temperature.

Flow Cytometry: Flow cytometric analysis of HeLa cells.. Recommended concentration: 10ug/ml.

Species Reactivity

Tested: Human, Rat

Expected from sequence similarity: Human, Rat

Specific References

**This antibody (previous batch) has been successfully used in Western blot on
Mouse:**

Yun-Cheng Hsieh, Kuei-Chuan Lee, Hao-Jan Lei, Keng-Hsin Lan, Teh-Ia Huo, Yi-Tsung Lin, Che-Chang Chan, Bernd Schnabl, Yi-Hsiang Huang, Ming-Chih Hou, Han-Chieh Lin (Pro)renin Receptor Knockdown Attenuates Liver Fibrosis Through Inactivation of ERK/TGF-β1/SMAD3 Pathway.

Cell Mol Gastroenterol Hepatol. 2021;12(3):813-838.

PMID: 34087453

This antibody (previous batch) has been successfully used in IHC on Human:

Sarah J Delforce, Eugenie R Lumbers, Celine Corbisier de Meaultsart, Yu Wang, Anthony Proietto, Geoffrey Otton, Jim Scurry, Nicole M Verrills, Rodney J Scott and Kirsty G Pringle.

Expression of renin–angiotensin system (RAS) components in endometrial cancer. Endocr Connect. 2017 Jan;6(1):9-19.

PMID: 27956412

This antibody (previous batch) has been successfully used in IHC on Human:

Pringle KG, Zakar T, Yates D, Mitchell CM, Hirst JJ, Lumbers ER.

Molecular evidence of a (pro)renin/(pro)renin receptor system in human intrauterine tissues in pregnancy and its association with PGHS-2.

J Renin Angiotensin Aldosterone Syst. 2010 Aug 11.

PMID: 20702505

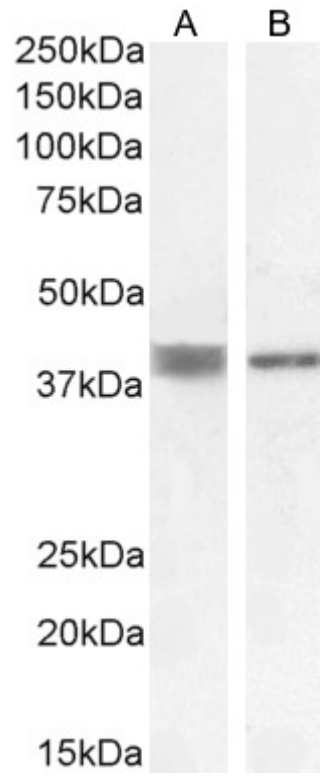
This antibody (previous batch) has been successfully used in Rat in the following paper:

Zhu A, Yoneda T, Demura M, Karashima S, Usukura M, Yamagishi M, Takeda Y.

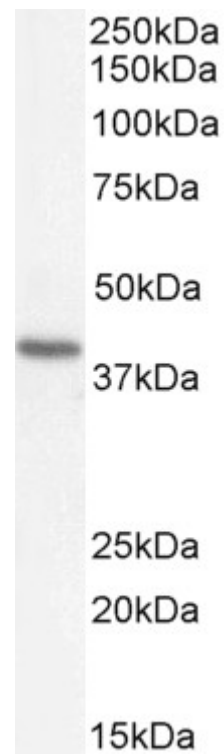
Effect of mineralocorticoid receptor blockade on the renal renin-angiotensin system in Dahl salt-sensitive hypertensive rats.

J Hypertens. 2009 Apr;27(4):800-5.

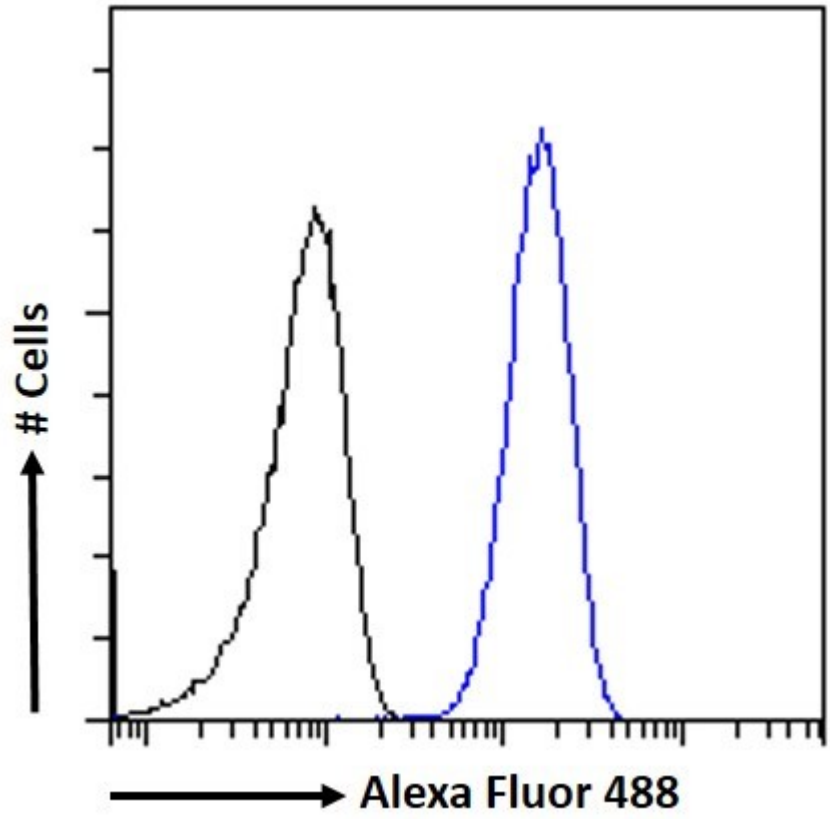
PMID: 19516179



EB06118 (0.5 μ g/ml) staining of Human Cerebellum (A) and Heart (B) lysate (35 μ g protein in RIPA buffer). Detected by chemiluminescence.



EB06118 (0.5 μ g/ml) staining of Rat Heart lysate (35 μ g protein in RIPA buffer). Detected by chemiluminescence.



EB06118 Flow cytometric analysis of paraformaldehyde fixed HeLa cells (blue line), permeabilized with 0.5% Triton. Primary incubation 1hr (10ug/ml) followed by Alexa Fluor 488 secondary antibody (2ug/ml). IgG control: Unimmunized goat IgG (black line) followed by Alexa Fluor 488 secondary antibody.