



SZABO SCANDIC

Part of Europa Biosite

Produktinformation



Forschungsprodukte & Biochemikalien



Zellkultur & Verbrauchsmaterial



Diagnostik & molekulare Diagnostik



Laborgeräte & Service

Weitere Information auf den folgenden Seiten!
See the following pages for more information!



Lieferung & Zahlungsart

siehe unsere [Liefer- und Versandbedingungen](#)

Zuschläge

- Mindermengenzuschlag
- Trockeneiszuschlag
- Gefahrgutzuschlag
- Expressversand

SZABO-SCANDIC HandelsgmbH

Quellenstraße 110, A-1100 Wien

T. +43(0)1 489 3961-0

F. +43(0)1 489 3961-7

mail@szabo-scandic.com

www.szabo-scandic.com

[linkedin.com/company/szaboscandic](https://www.linkedin.com/company/szaboscandic) 



UK Office

Everest Biotech Ltd

Cherwell Innovation Centre
77 Heyford Park
Upper Heyford
Oxfordshire
OX25 5HD
UK

Enquiries:

info@everestbiotech.com

Sales:

sales@everestbiotech.com

Tech support:

support@everestbiotech.com

Tel: +44 (0)1869 238326

Fax: +44 (0)1869 238327

US Office

Everest Biotech c/o Abcore

405 Maple Street, Suite A106
Ramona,
CA 92065
USA

Inquiries:

info@everestbiotech.com

Sales:

usasales@everestbiotech.com

Tech support:

support@everestbiotech.com

Tel: 888-320-4628 (toll-free)

Fax: 888-841-9041

www.everestbiotech.com

**Research Use Only. Not for
diagnostic or therapeutic use.**

EB06123 - Goat Anti-CENTB2 / ACAP2 Antibody

Size: 100µg specific antibody in 200µl



Target Protein

Principal Names: ACAP2, CENTB2, centaurin, beta 2, CNT-B2, KIAA0041, centaurin beta2, Arf GAP with coiled coil, ANK repeat and PH domains 2, ArfGAP with coiled-coil, ankyrin repeat and PH domains 2

Official Symbol: ACAP2

Accession Number(s): NP_036419.3

Human GeneID(s): [23527](#)

Non-Human GeneID(s): 78618 (mouse)

Immunogen

Peptide with sequence C-EKLNRFQQDSQKF, from the C Terminus of the protein sequence according to NP_036419.3.

Please note the [peptide](#) is available for sale.

Purification and Storage

Purified from goat serum by ammonium sulphate precipitation followed by antigen affinity chromatography using the immunizing peptide.

Supplied at 0.5 mg/ml in Tris saline, 0.02% sodium azide, pH7.3 with 0.5% bovine serum albumin.

Aliquot and store at -20°C. Minimize freezing and thawing.

Applications Tested

Peptide ELISA: antibody detection limit dilution 1:32000.

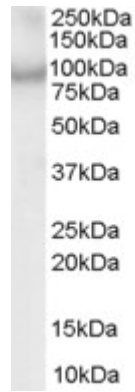
Western blot: Approx 90kDa band observed in Mouse and Rat Lung lysates and in lysates of cell lines MOLT4 and NIH3T3 (calculated MW of 88.1kDa according to Human NP_036419 and 87.2kDa according to Mouse NP_084414.1 and Rat NP_001029178.1).
Recommended concentration: 0.3-1µg/ml.

IHC: In paraffin embedded Human Lung shows strong staining of Type II pneumocytes.
Recommended concentration, 5-10µg/ml.

Species Reactivity

Tested: Human, Mouse, Rat

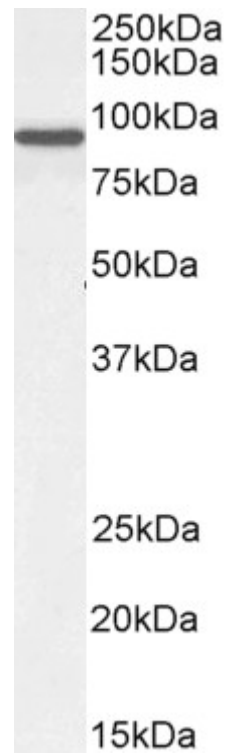
Expected from sequence similarity: Human, Mouse, Rat, Dog, Pig



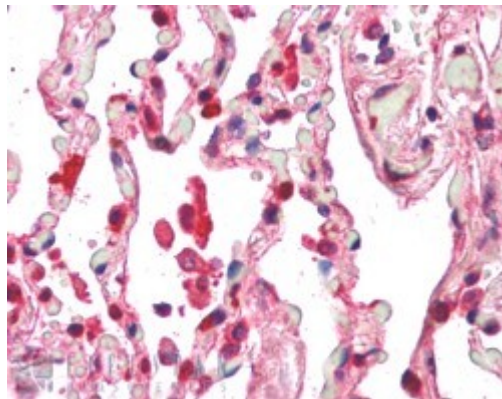
EB06123 (1µg/ml) staining of MOLT4 lysate (35µg protein in RIPA buffer). Primary incubation was 1 hour.
Detected by chemiluminescence.



EB06123 (0.3µg/ml) staining of Mouse (A) and Rat (B) Lung lysate (35µg protein in RIPA buffer). Primary incubation was 1 hour. Detected by chemiluminescence.



EB06123 (0.3 μ g/ml) staining of NIH3T3 cell lysate (35 μ g protein in RIPA buffer). Primary incubation was 1 hour. Detected by chemiluminescence.



EB06123 (5 μ g/ml) staining of paraffin embedded Human Lung. Steamed antigen retrieval with citrate buffer pH 6, AP-staining.