



SZABO SCANDIC

Part of Europa Biosite

Produktinformation



Forschungsprodukte & Biochemikalien



Zellkultur & Verbrauchsmaterial



Diagnostik & molekulare Diagnostik



Laborgeräte & Service

Weitere Information auf den folgenden Seiten!
See the following pages for more information!



Lieferung & Zahlungsart

siehe unsere [Liefer- und Versandbedingungen](#)

Zuschläge

- Mindermengenzuschlag
- Trockeneiszuschlag
- Gefahrgutzuschlag
- Expressversand

SZABO-SCANDIC HandelsgmbH

Quellenstraße 110, A-1100 Wien

T. +43(0)1 489 3961-0

F. +43(0)1 489 3961-7

mail@szabo-scandic.com

www.szabo-scandic.com

[linkedin.com/company/szaboscandic](https://www.linkedin.com/company/szaboscandic) 



UK Office

Everest Biotech Ltd

Cherwell Innovation Centre
77 Heyford Park
Upper Heyford
Oxfordshire
OX25 5HD
UK

Enquiries:

info@everestbiotech.com

Sales:

sales@everestbiotech.com

Tech support:

support@everestbiotech.com

Tel: +44 (0)1869 238326

Fax: +44 (0)1869 238327

US Office

Everest Biotech c/o Abcore

405 Maple Street, Suite A106
Ramona,
CA 92065
USA

Inquiries:

info@everestbiotech.com

Sales:

usasales@everestbiotech.com

Tech support:

support@everestbiotech.com

Tel: 888-320-4628 (toll-free)

Fax: 888-841-9041

www.everestbiotech.com

**Research Use Only. Not for
diagnostic or therapeutic use.**

EB06142 - Goat Anti-GRAF / ARHGAP26 Antibody

Size: 100µg specific antibody in 200µl



Target Protein

Principal Names: ARHGAP26, GRAF, Rho GTPase activating protein 26, KIAA0621, FLJ42530, OPHN1L, OPHN1L1, GTPase regulator associated with FAK, GTPase regulator associated with focal adhesion kinase pp125(FAK), GTPase regulator associated with the focal adhesion kinase pp125

Official Symbol: ARHGAP26

Accession Number(s): NP_055886.1; NP_001129080.1

Human GeneID(s): [23092](#)

Non-Human GeneID(s): 71302 (mouse)

Important Comments: This antibody is expected to recognise both reported isoforms.

Immunogen

Peptide with sequence C-KTGLIPENYVEFL, from the C Terminus of the protein sequence according to NP_055886.1; NP_001129080.1.

Please note the [peptide](#) is available for sale.

Purification and Storage

Purified from goat serum by ammonium sulphate precipitation followed by antigen affinity chromatography using the immunizing peptide.

Supplied at 0.5 mg/ml in Tris saline, 0.02% sodium azide, pH7.3 with 0.5% bovine serum albumin.

Aliquot and store at -20°C. Minimize freezing and thawing.

Applications Tested

Peptide ELISA: antibody detection limit dilution 1:64000.

Western blot: Approx 90kDa band observed in Human Heart lysates (calculated MW of 92.2kDa according to NP_055886.1). Recommended concentration: 0.3-1µg/ml. An additional strong band of unknown identity was also consistently observed at 16kDa. This band was successfully blocked by incubation with the immunising peptide.

IHC: Paraffin embedded Human Colon. Recommended concentration: 3.75µg/ml.

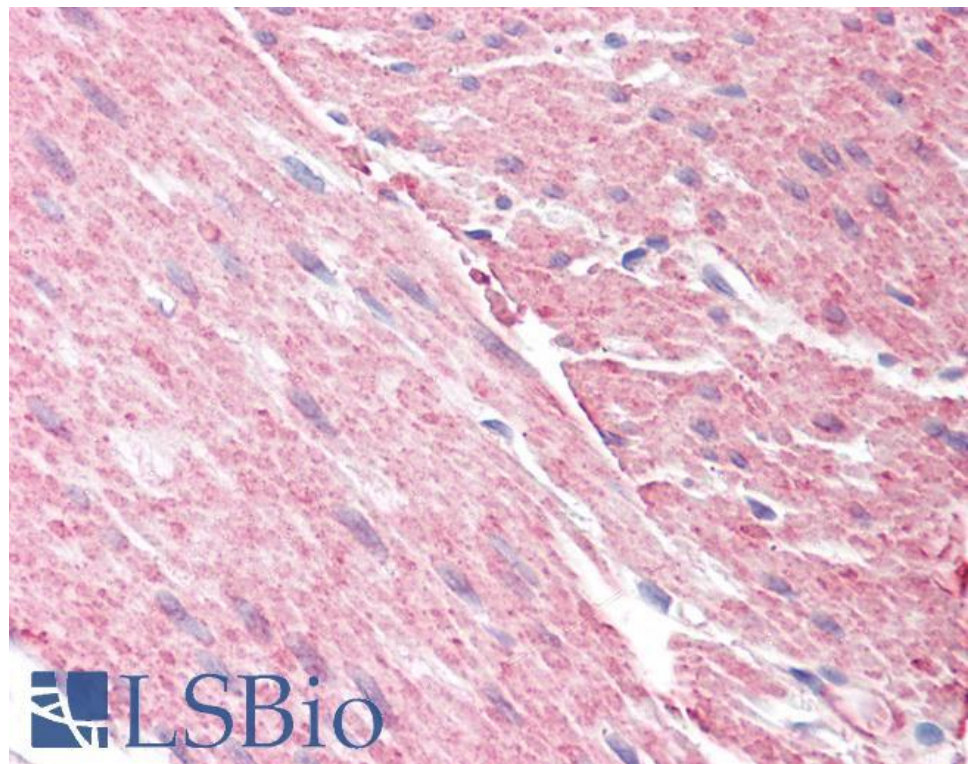
Species Reactivity

Tested: Human

Expected from sequence similarity: Human, Mouse, Rat, Dog, Cow



EB06142 (0.3µg/ml) staining of Human Heart lysate (35µg protein in RIPA buffer) with (B) and without (A) blocking with the immunising peptide. Primary incubation was 1 hour. Detected by chemiluminescence.



EB06142 (3.75µg/ml) staining of paraffin embedded Human Colon. Steamed antigen retrieval with citrate buffer pH 6, AP-staining.