



# SZABO SCANDIC

Part of Europa Biosite

## Produktinformation



Forschungsprodukte & Biochemikalien



Zellkultur & Verbrauchsmaterial



Diagnostik & molekulare Diagnostik



Laborgeräte & Service

Weitere Information auf den folgenden Seiten!  
See the following pages for more information!



### Lieferung & Zahlungsart

siehe unsere [Liefer- und Versandbedingungen](#)

### Zuschläge

- Mindermengenzuschlag
- Trockeneiszuschlag
- Gefahrgutzuschlag
- Expressversand

### SZABO-SCANDIC HandelsgmbH

Quellenstraße 110, A-1100 Wien

T. +43(0)1 489 3961-0

F. +43(0)1 489 3961-7

[mail@szabo-scandic.com](mailto:mail@szabo-scandic.com)

[www.szabo-scandic.com](http://www.szabo-scandic.com)

[linkedin.com/company/szaboscandic](https://www.linkedin.com/company/szaboscandic) 



## UK Office

### Everest Biotech Ltd

Cherwell Innovation Centre  
77 Heyford Park  
Upper Heyford  
Oxfordshire  
OX25 5HD  
UK

Enquiries:

[info@everestbiotech.com](mailto:info@everestbiotech.com)

Sales:

[sales@everestbiotech.com](mailto:sales@everestbiotech.com)

Tech support:

[support@everestbiotech.com](mailto:support@everestbiotech.com)

Tel: +44 (0)1869 238326

Fax: +44 (0)1869 238327

## US Office

### Everest Biotech c/o Abcore

405 Maple Street, Suite A106  
Ramona,  
CA 92065  
USA

Inquiries:

[info@everestbiotech.com](mailto:info@everestbiotech.com)

Sales:

[usasales@everestbiotech.com](mailto:usasales@everestbiotech.com)

Tech support:

[support@everestbiotech.com](mailto:support@everestbiotech.com)

Tel: 888-320-4628 (toll-free)

Fax: 888-841-9041

[www.everestbiotech.com](http://www.everestbiotech.com)

**Research Use Only. Not for  
diagnostic or therapeutic use.**

## EB06158 - Goat Anti-ORP9 / OSBPL9 Antibody

Size: 100µg specific antibody in 200µl



### Target Protein

**Principal Names:** OSBPL9, ORP9, FLJ12492, FLJ14629, FLJ14801, FLJ32055, FLJ34384, MGC15035, oxysterol binding protein-like 9, OSBP-related protein 9, oxysterol-binding protein-related protein 9

**Official Symbol:** OSBPL9

**Accession Number(s):** NP\_078862.4; NP\_683702.1; NP\_683704.2; NP\_683705.1; NP\_683706.3; NP\_683707.3

**Human GeneID(s):** [114883](#)

**Important Comments:** This antibody is expected to recognise all six human isoforms (NP\_078862.4; NP\_683702.1; NP\_683704.2; NP\_683705.1; NP\_683706.3; NP\_683707.3). Reported variants represent identical protein (NP\_683702.1; NP\_683703.1).

### Immunogen

Peptide with sequence C-EPLLKRLGAAKH, from the C Terminus of the protein sequence according to NP\_078862.4; NP\_683702.1; NP\_683704.2; NP\_683705.1; NP\_683706.3; NP\_683707.3.

Please note the [peptide](#) is available for sale.

### Purification and Storage

Purified from goat serum by ammonium sulphate precipitation followed by antigen affinity chromatography using the immunizing peptide.

Supplied at 0.5 mg/ml in Tris saline, 0.02% sodium azide, pH7.3 with 0.5% bovine serum albumin.

Aliquot and store at -20°C. Minimize freezing and thawing.

### Applications Tested

**Peptide ELISA:** antibody detection limit dilution 1:32000.

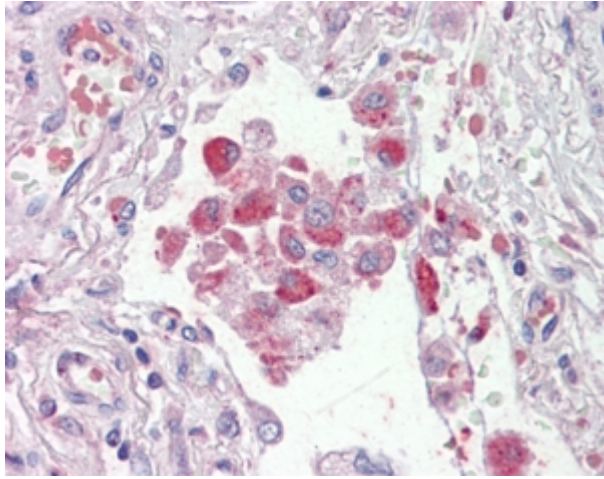
**Western blot:** Preliminary experiments gave bands at approx 150kDa and 19kDa in lysates of Human Brain, and Testis and 55kDa in lysates of Human Placenta and Testes after 0.5 µg/ml antibody staining. Please note that currently we cannot find an explanation in the literature for the bands we observe given the different calculated sizes of the six reported isoforms (a: 62.5kDa for NP\_683702.1 and NP\_683703.1; b: 63.9kDa for NP\_683704.1; c: 70.2kDa for NP\_683705.1; d: 81.8kDa for NP\_683706.1; e: 83.2 kDa for NP\_078862.2; f: 84.3kDa for NP\_683707.1). All detected bands were successfully blocked by incubation with the immunizing peptide (and BLAST results with the immunizing peptide sequence did not identify any other proteins to explain the additional bands). We would appreciate any feedback from people in the field - have any results been reported with other antibodies/lysates? Have any further splice variants/modified forms been reported?

**IHC:** In paraffin embedded Human Lung shows staining of alveolar macrophages. . Recommended concentration, 2-4µg/ml.

### Species Reactivity

**Tested:** Human

**Expected from sequence similarity:** Human, Mouse, Rat, Dog, Pig, Cow



EB06158 (2.5µg/ml) staining of paraffin embedded Human Lung. Steamed antigen retrieval with citrate buffer pH 6, AP-staining.